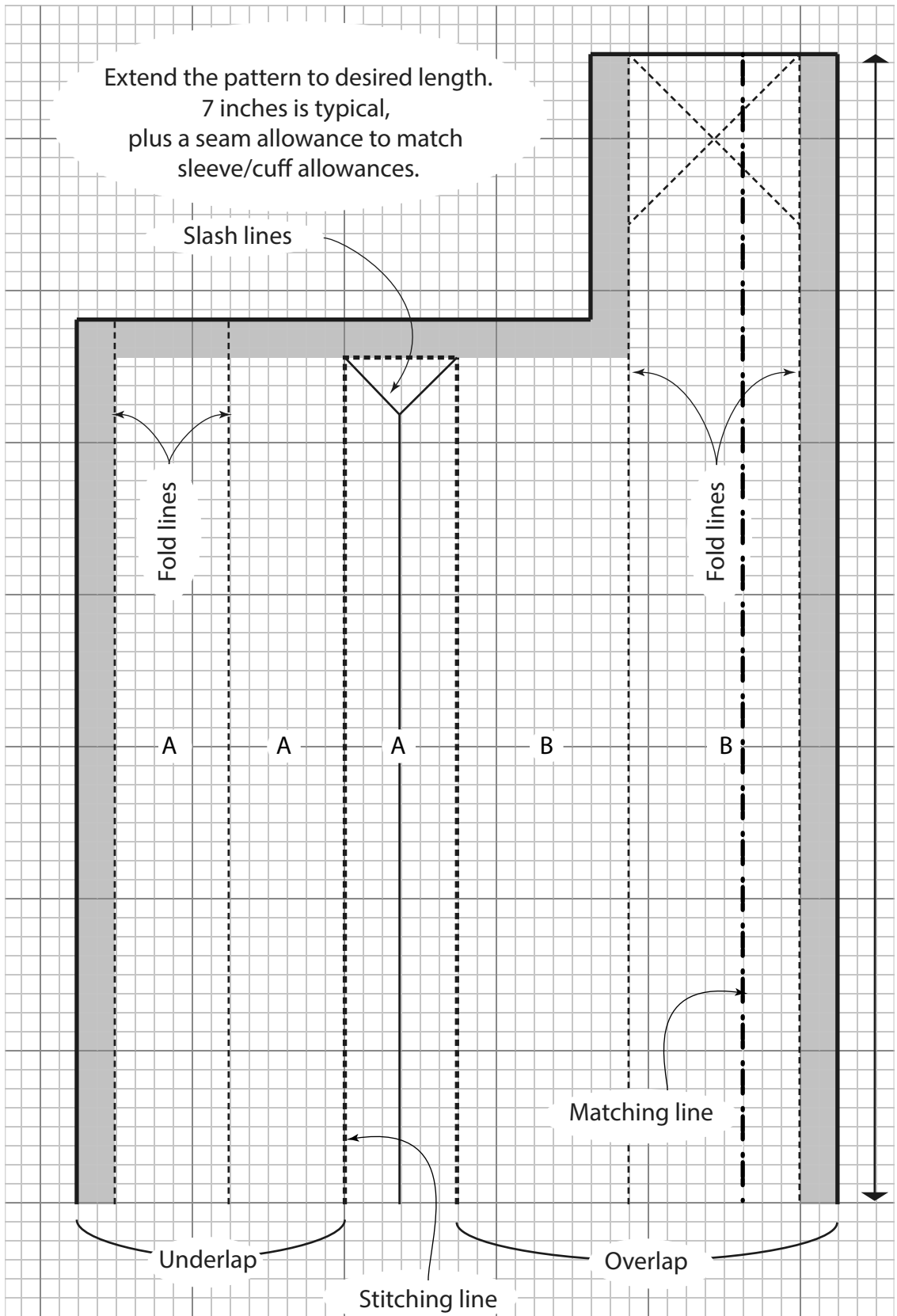
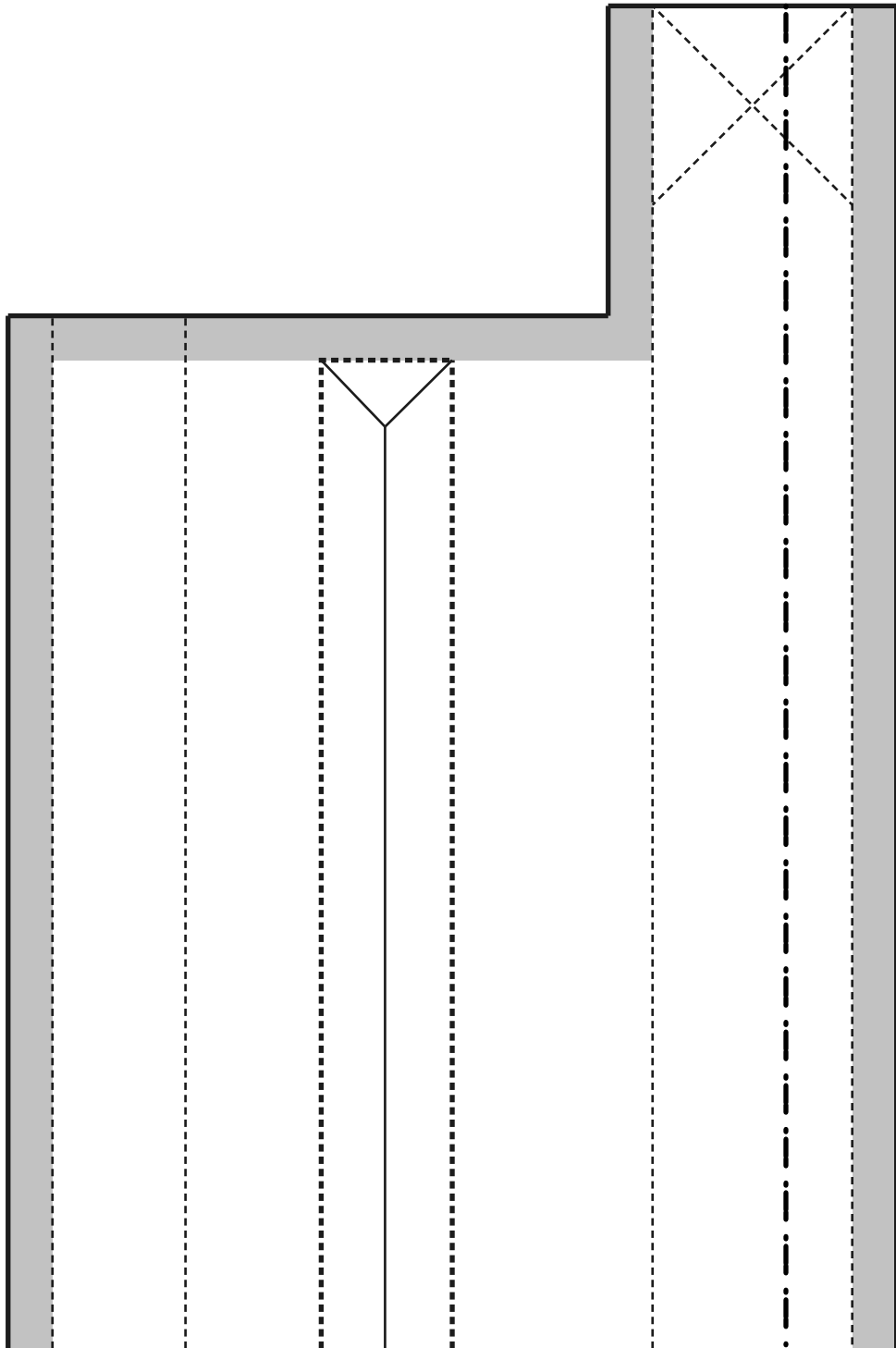


TYPICAL SHIRT SLEEVE
 PLACKET PATTERN
 TYPE 3, Var. 1



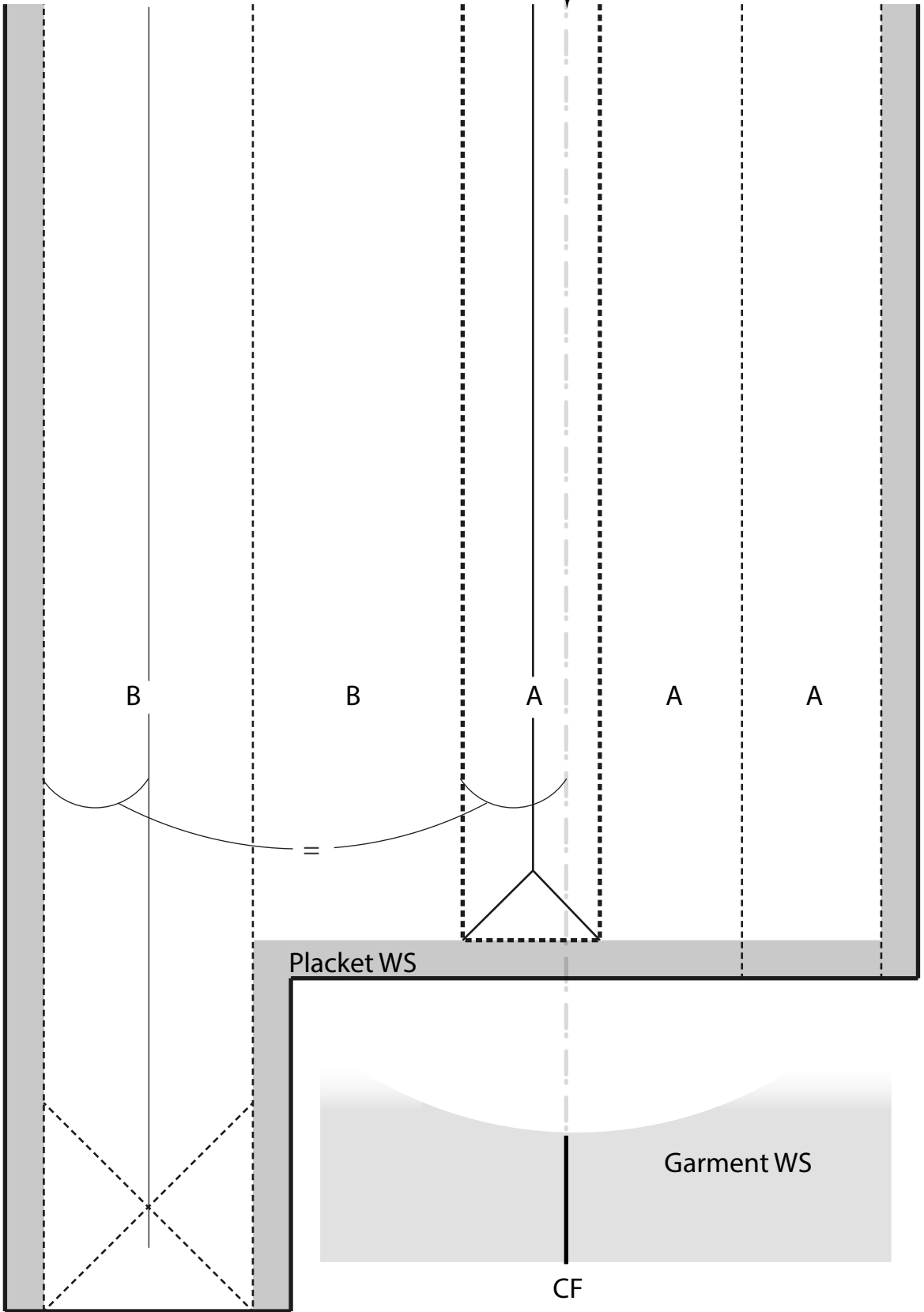
TYPICAL SHIRT SLEEVE
PLACKET PATTERN
TYPE 3, Var. 1, NO LABELS

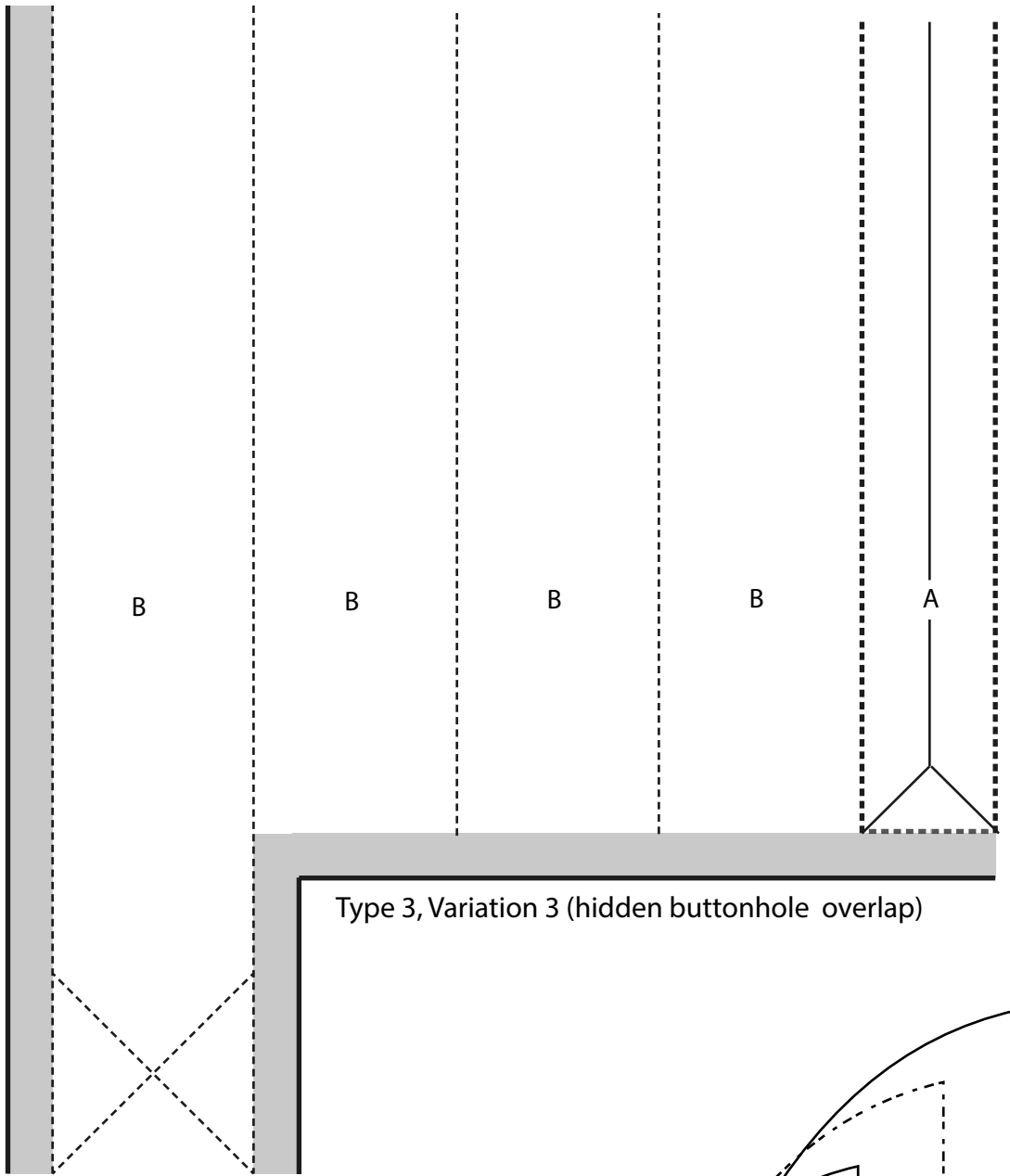


From THE SHIRTMaking WORKBOOK

Type 3, Variation 1, CF

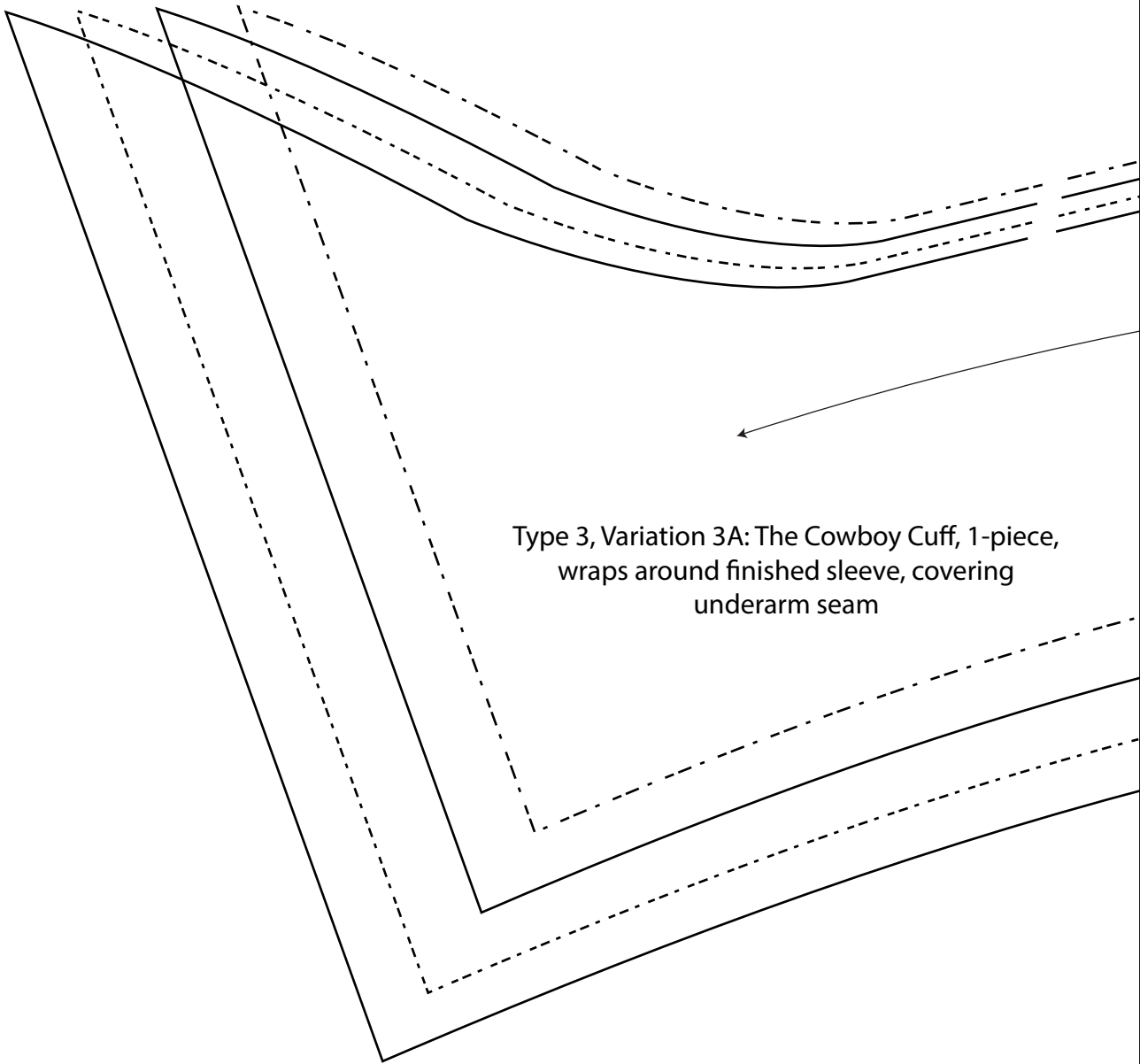
CF-matching line
Opening Side



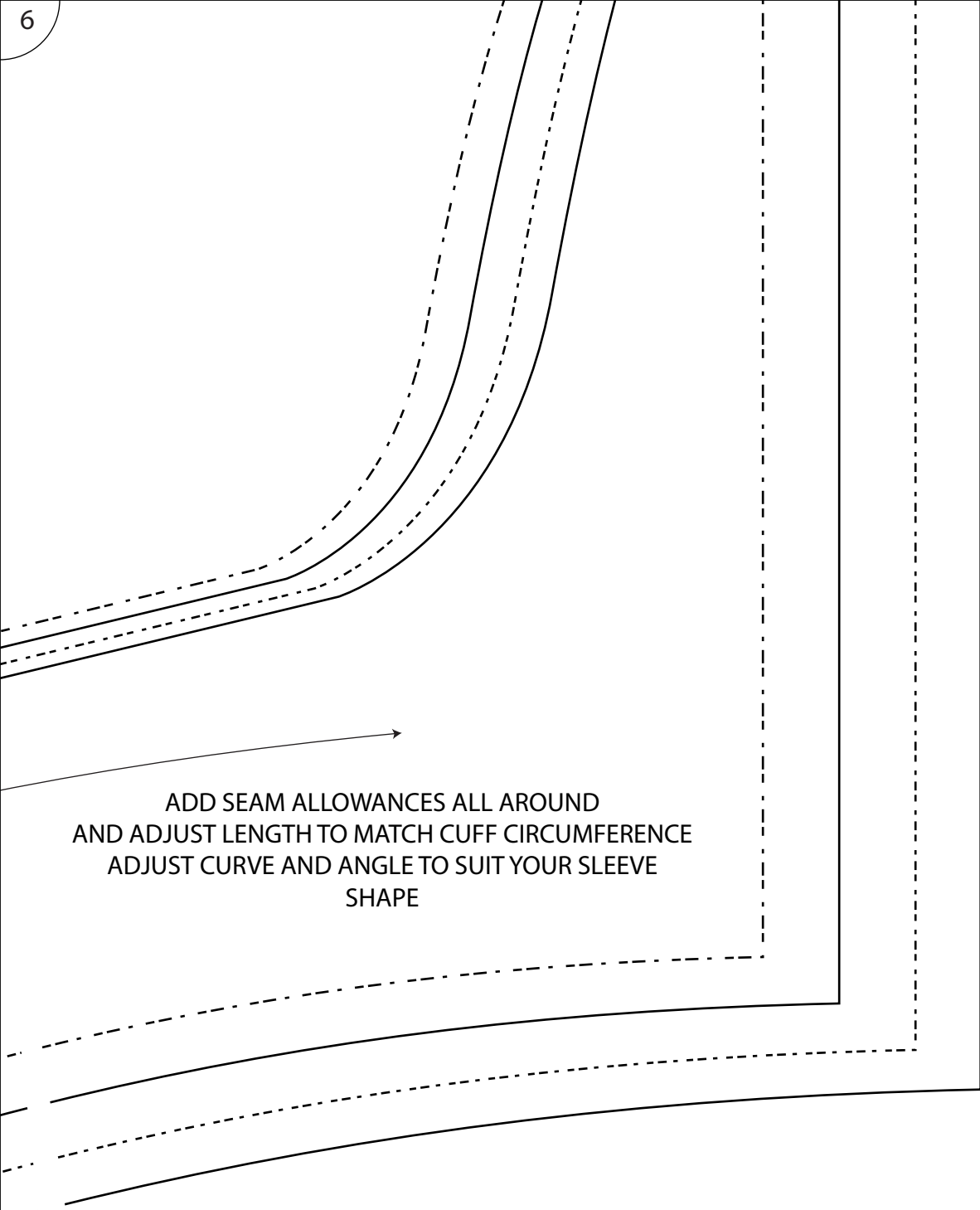


Type 3, Variation 3 (hidden buttonhole overlap)

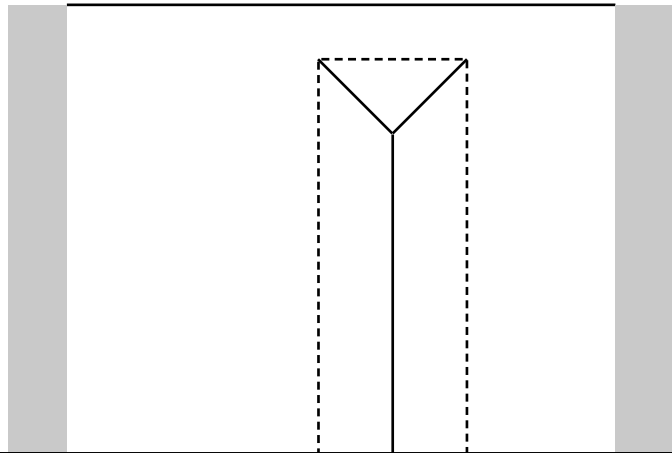
From THE SHIRTMaking WORKBOOK



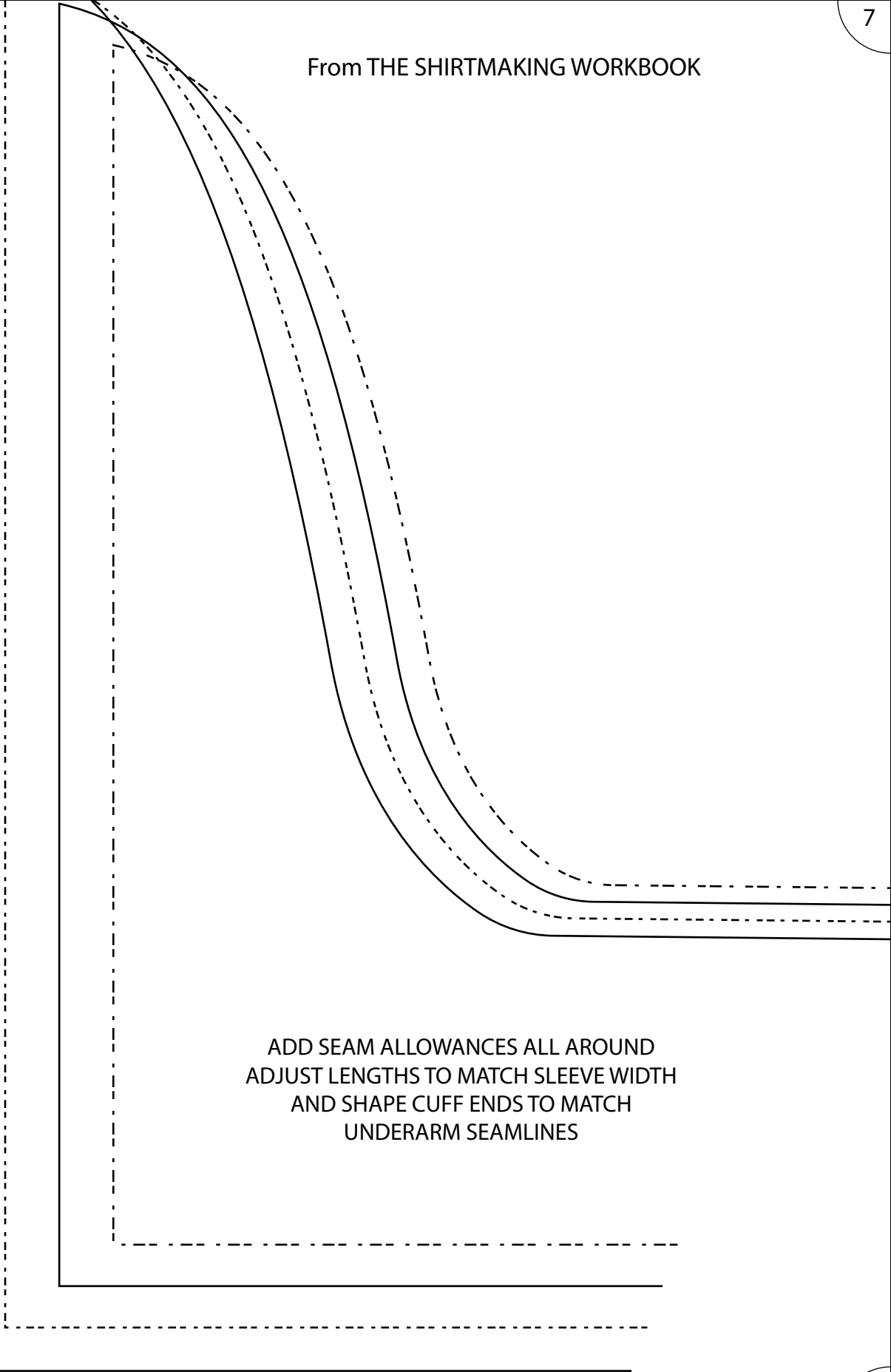
Type 3, Variation 3A: The Cowboy Cuff, 1-piece,
wraps around finished sleeve, covering
underarm seam



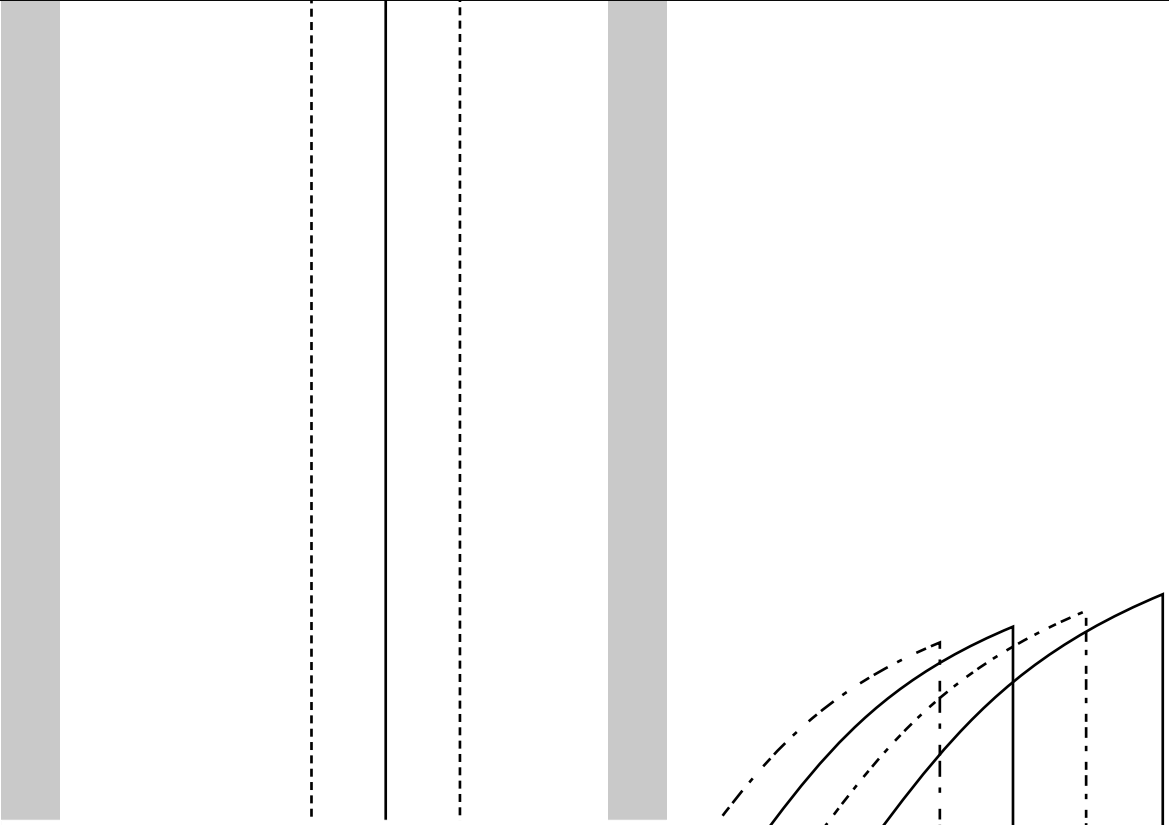
ADD SEAM ALLOWANCES ALL AROUND
AND ADJUST LENGTH TO MATCH CUFF CIRCUMFERENCE
ADJUST CURVE AND ANGLE TO SUIT YOUR SLEEVE
SHAPE



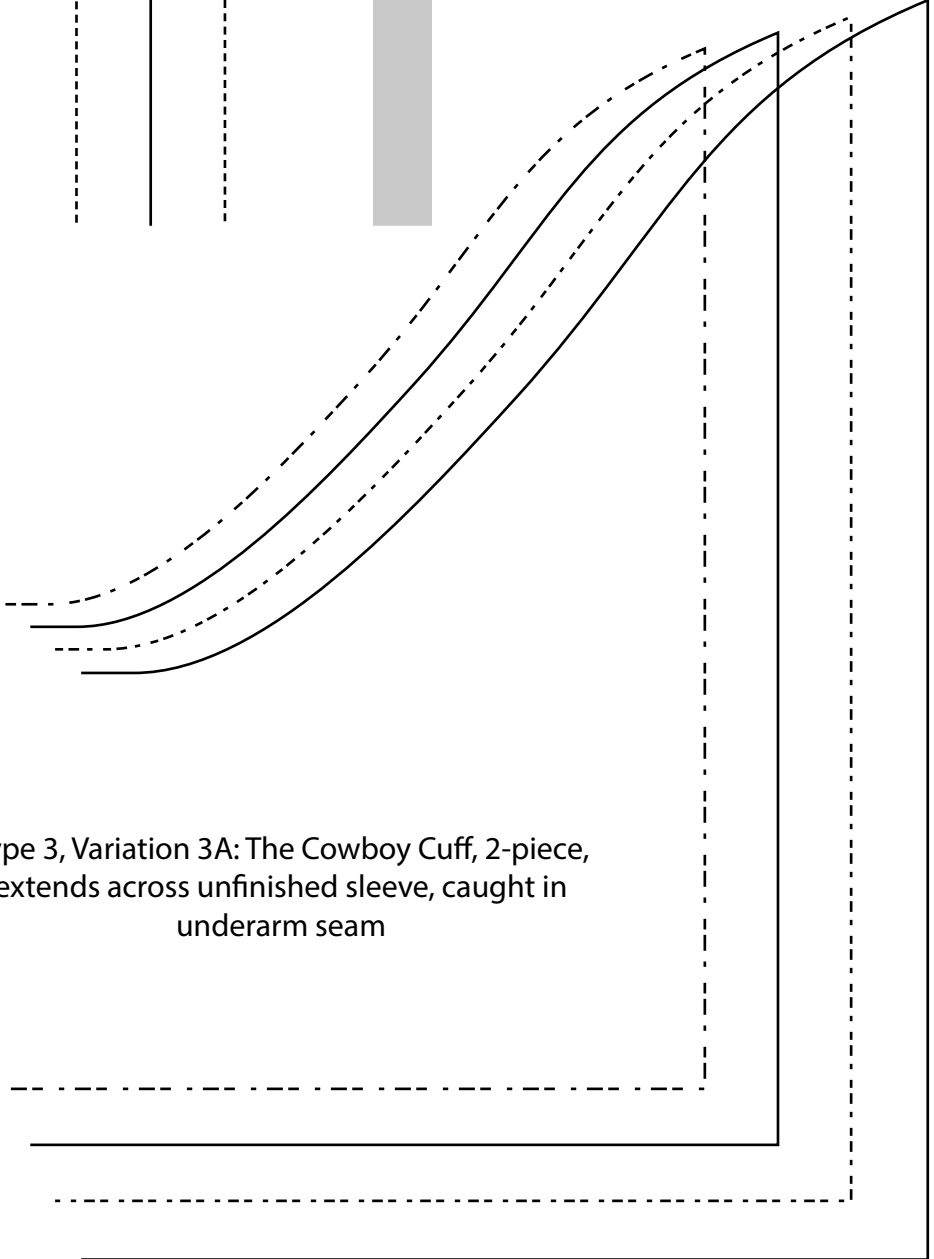
From THE SHIRTMAKING WORKBOOK

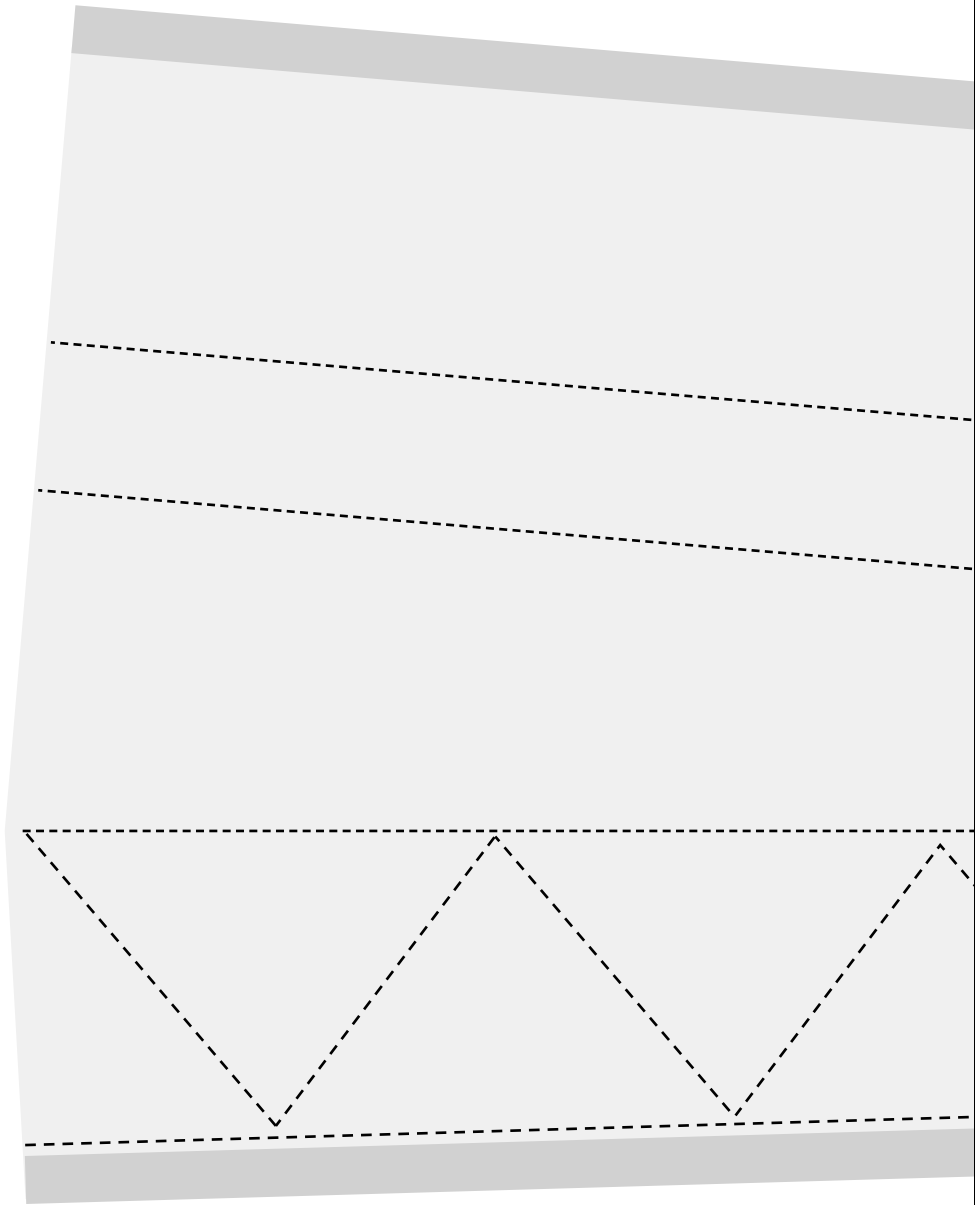


ADD SEAM ALLOWANCES ALL AROUND
ADJUST LENGTHS TO MATCH SLEEVE WIDTH
AND SHAPE CUFF ENDS TO MATCH
UNDERARM SEAMLINES



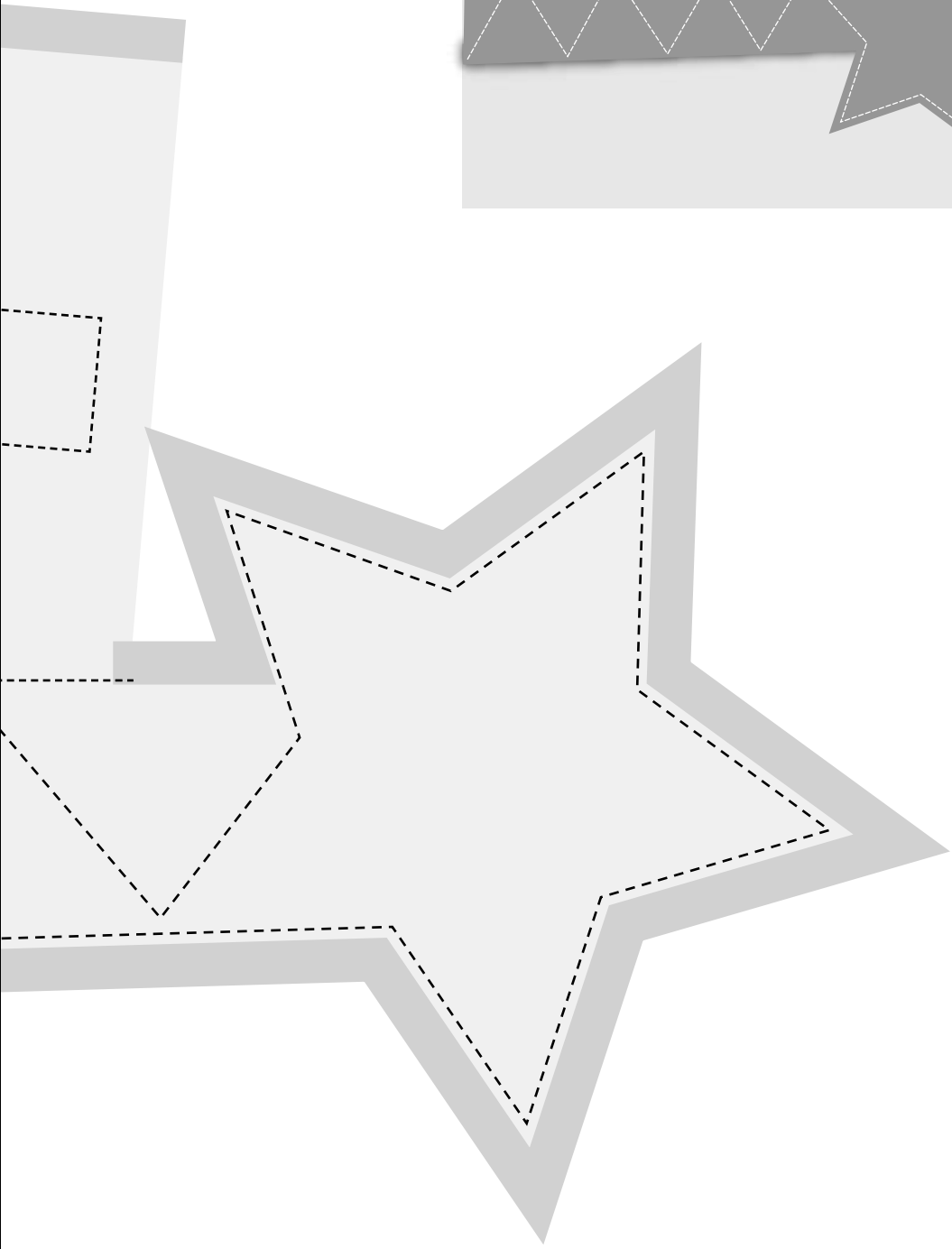
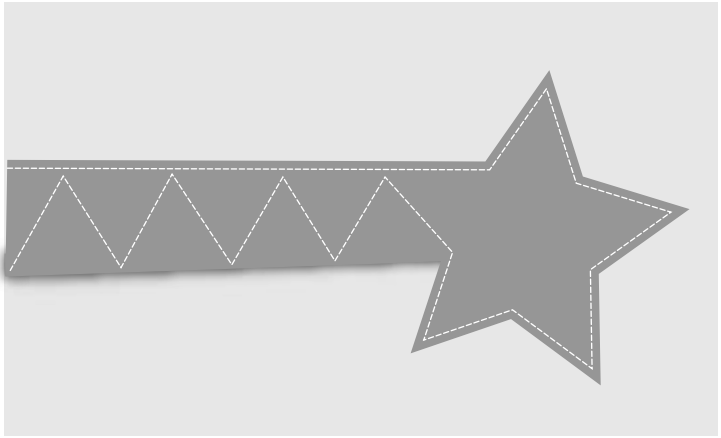
Type 3, Variation 3A: The Cowboy Cuff, 2-piece, extends across unfinished sleeve, caught in underarm seam



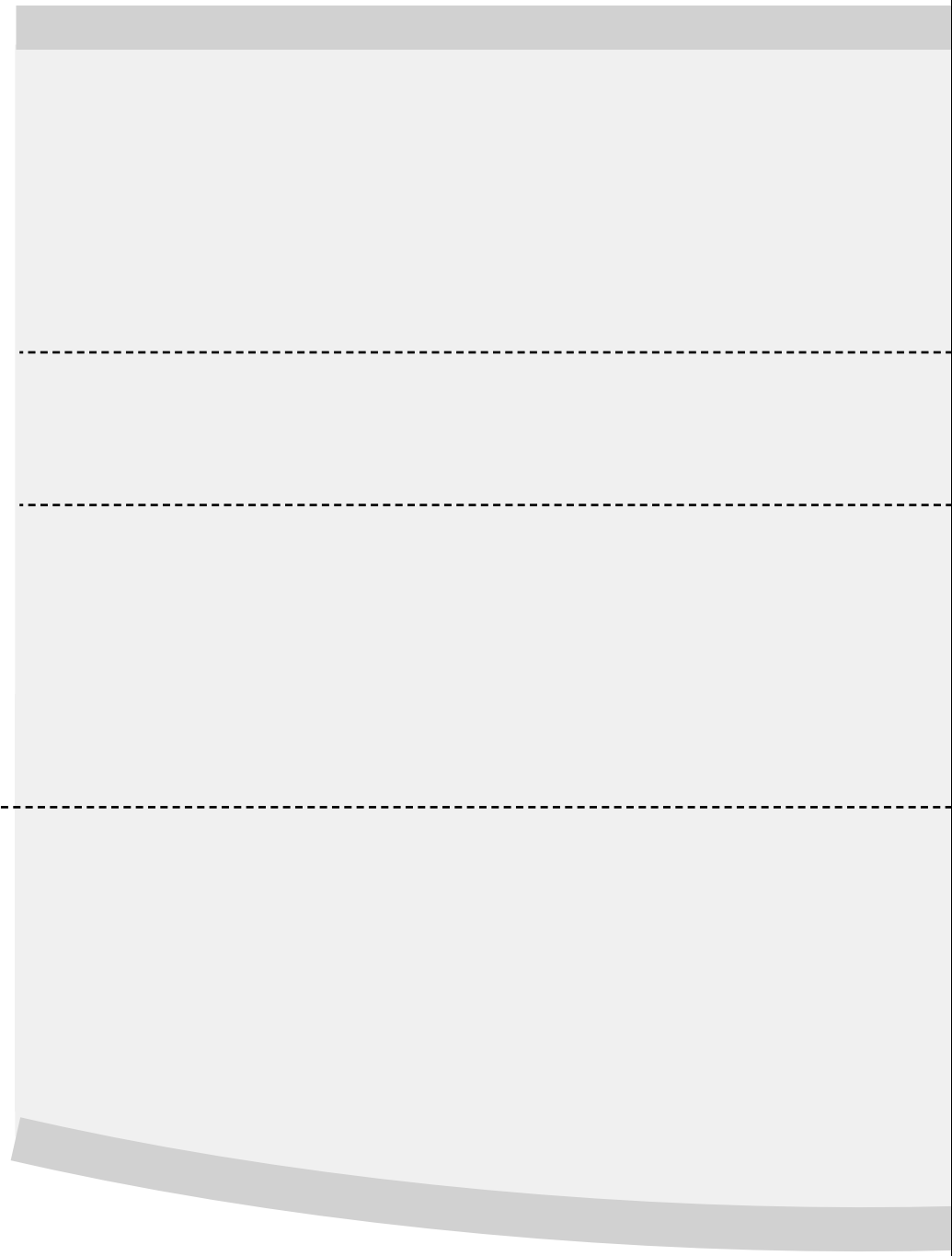


From THE SHIRTMAKING WORKBOOK

TYPE 3 Variation 1

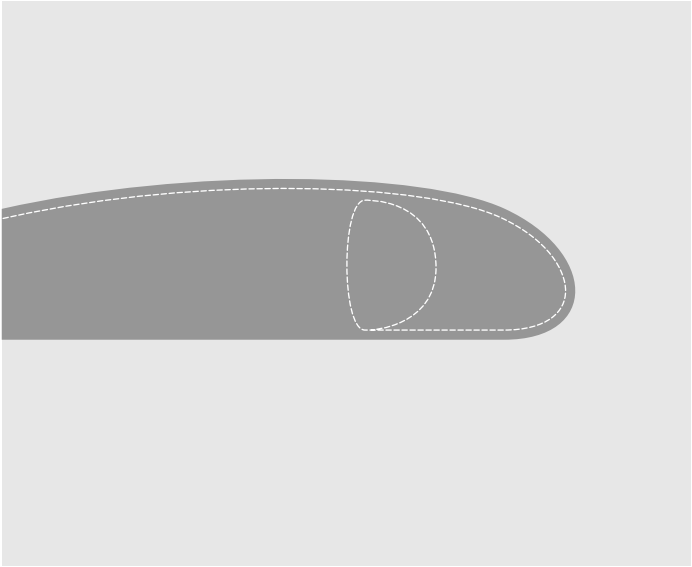
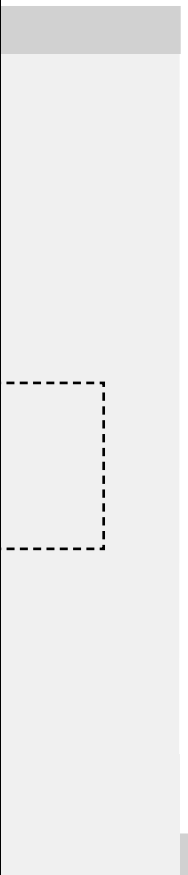


From THE SHIRTMaking WORKBOOK

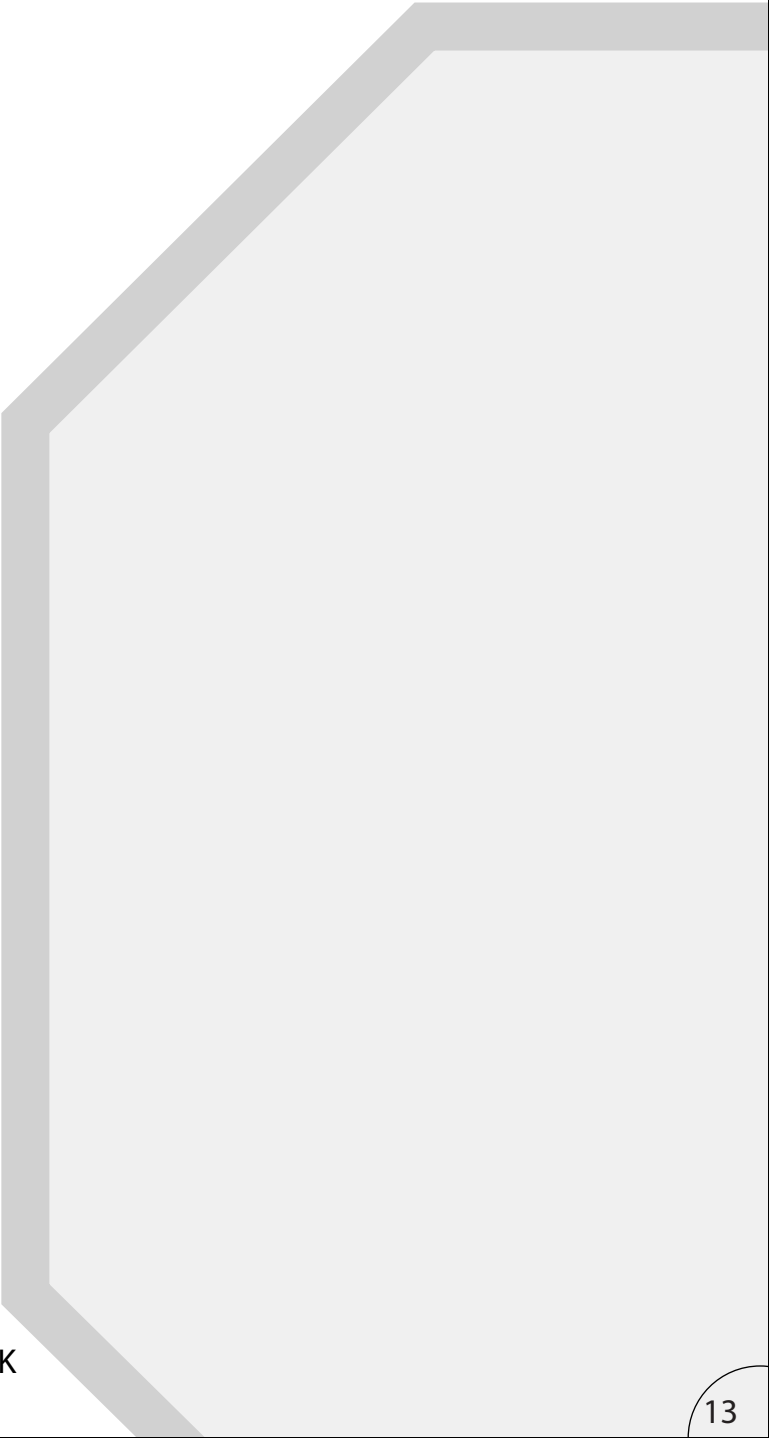


From THE SHIRTMAKING WORKBOOK

TYPE 3 Variation 1

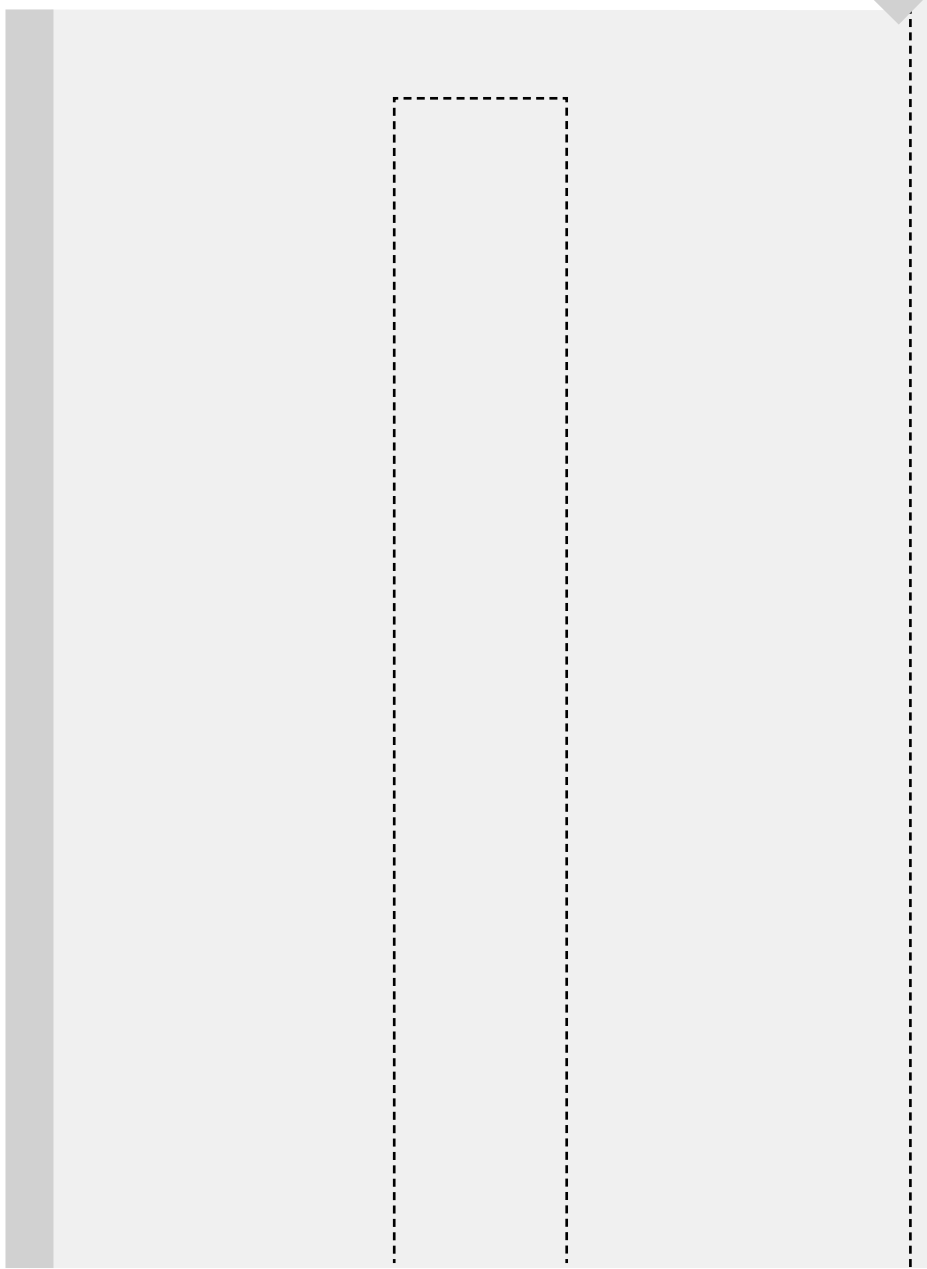


From THE SHIRTMAKING WORKBOOK

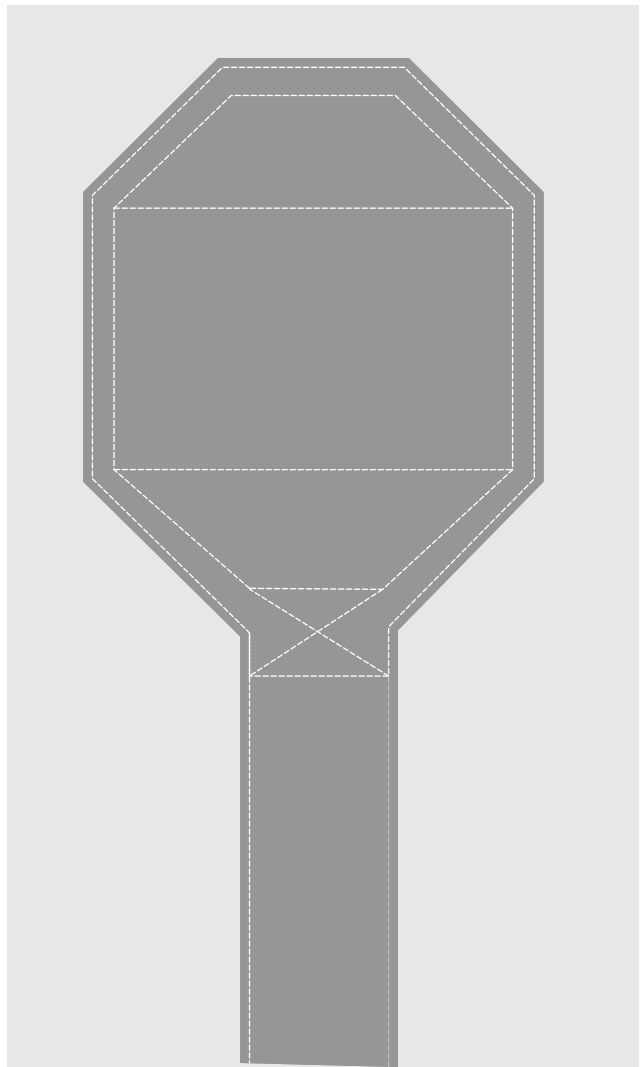


TYPE 3 Variation 1





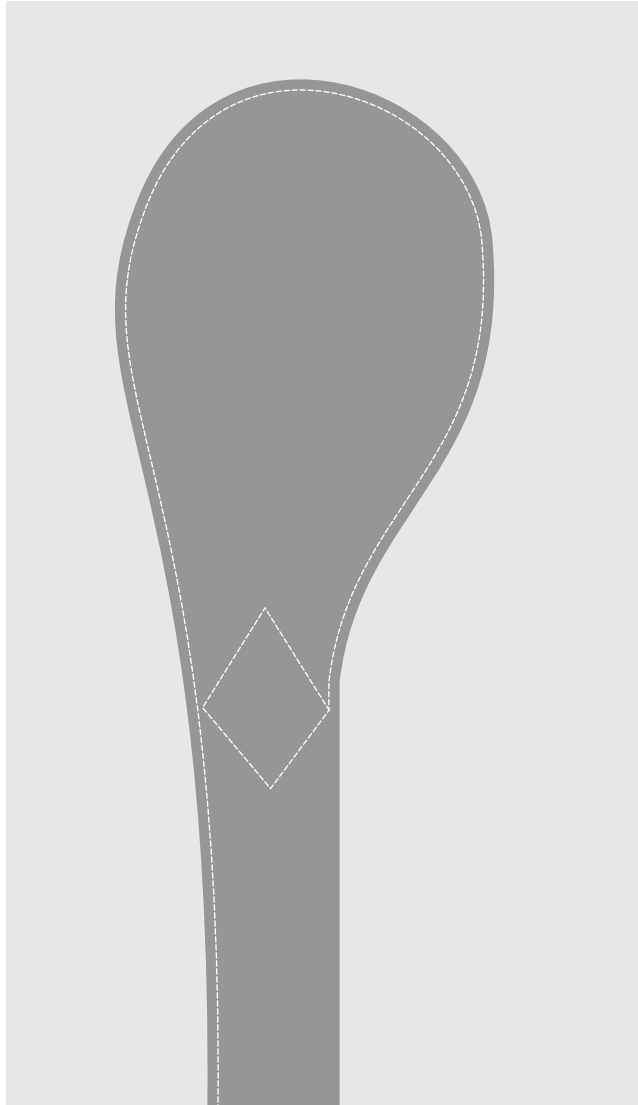
TYPE 3 Variation 1

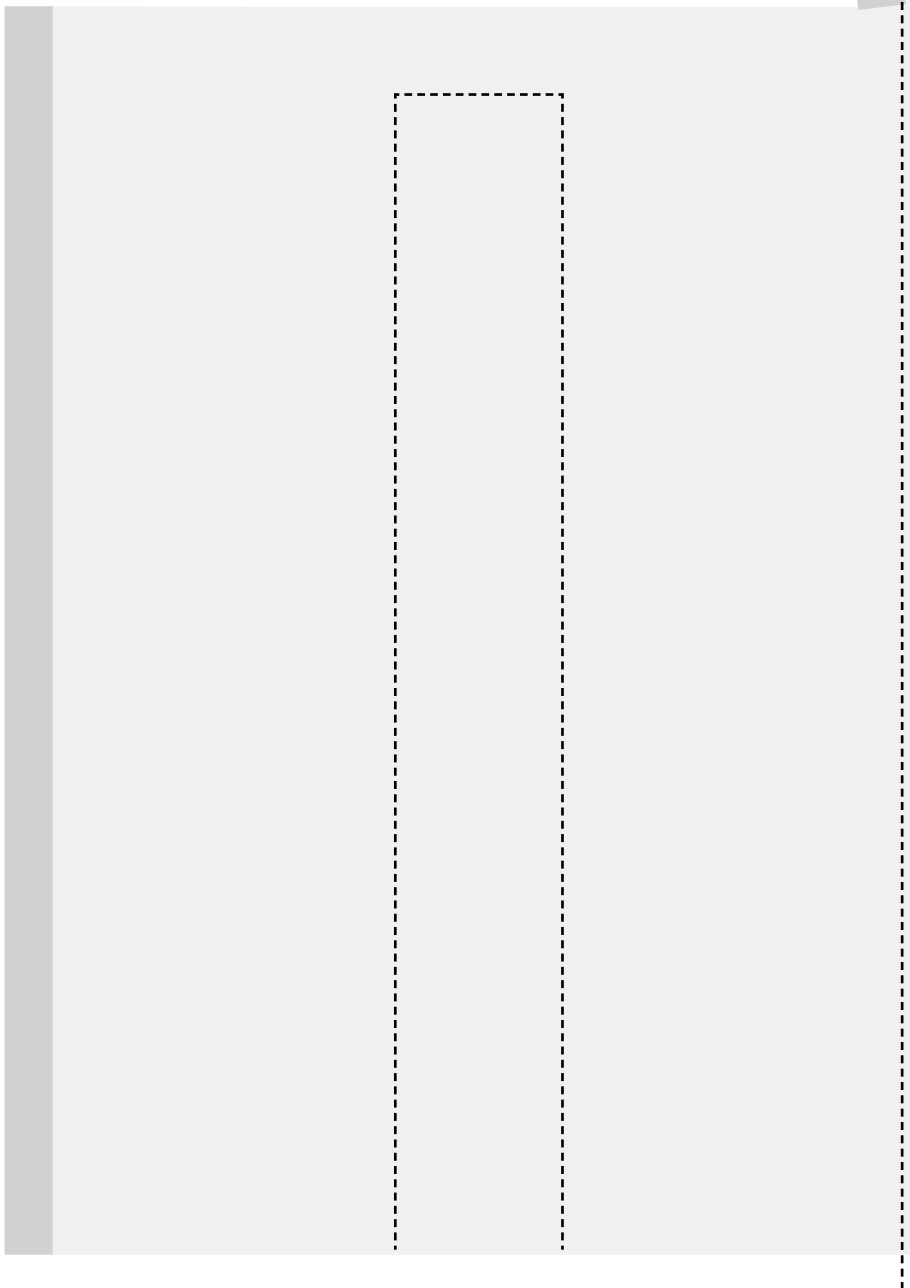




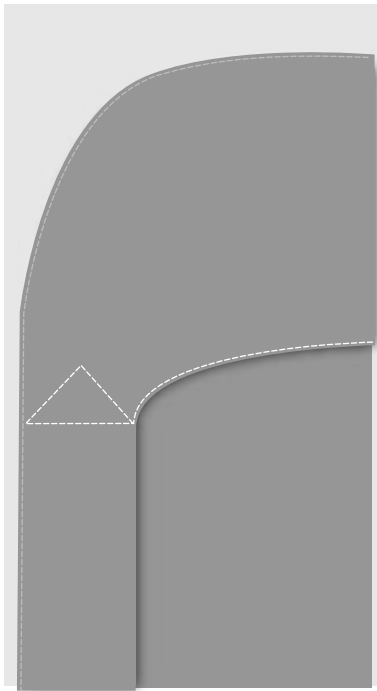
From THE SHIRTMaking WORKBOOK

TYPE 3 Variation 1

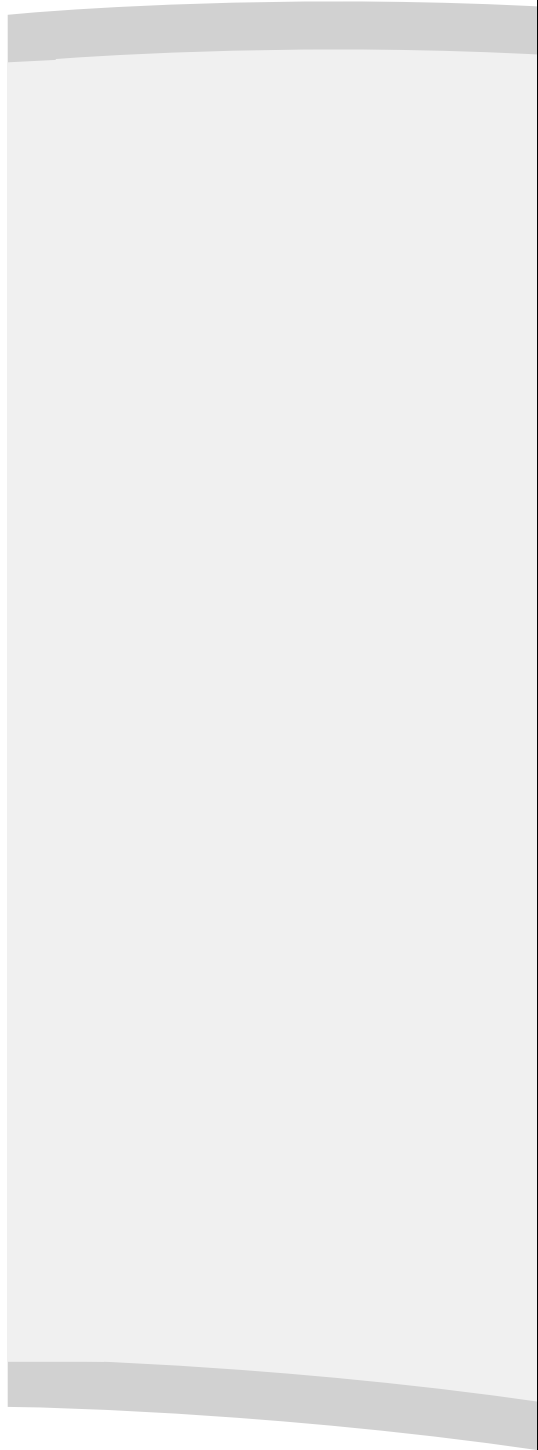




TYPE 3 Variation 1

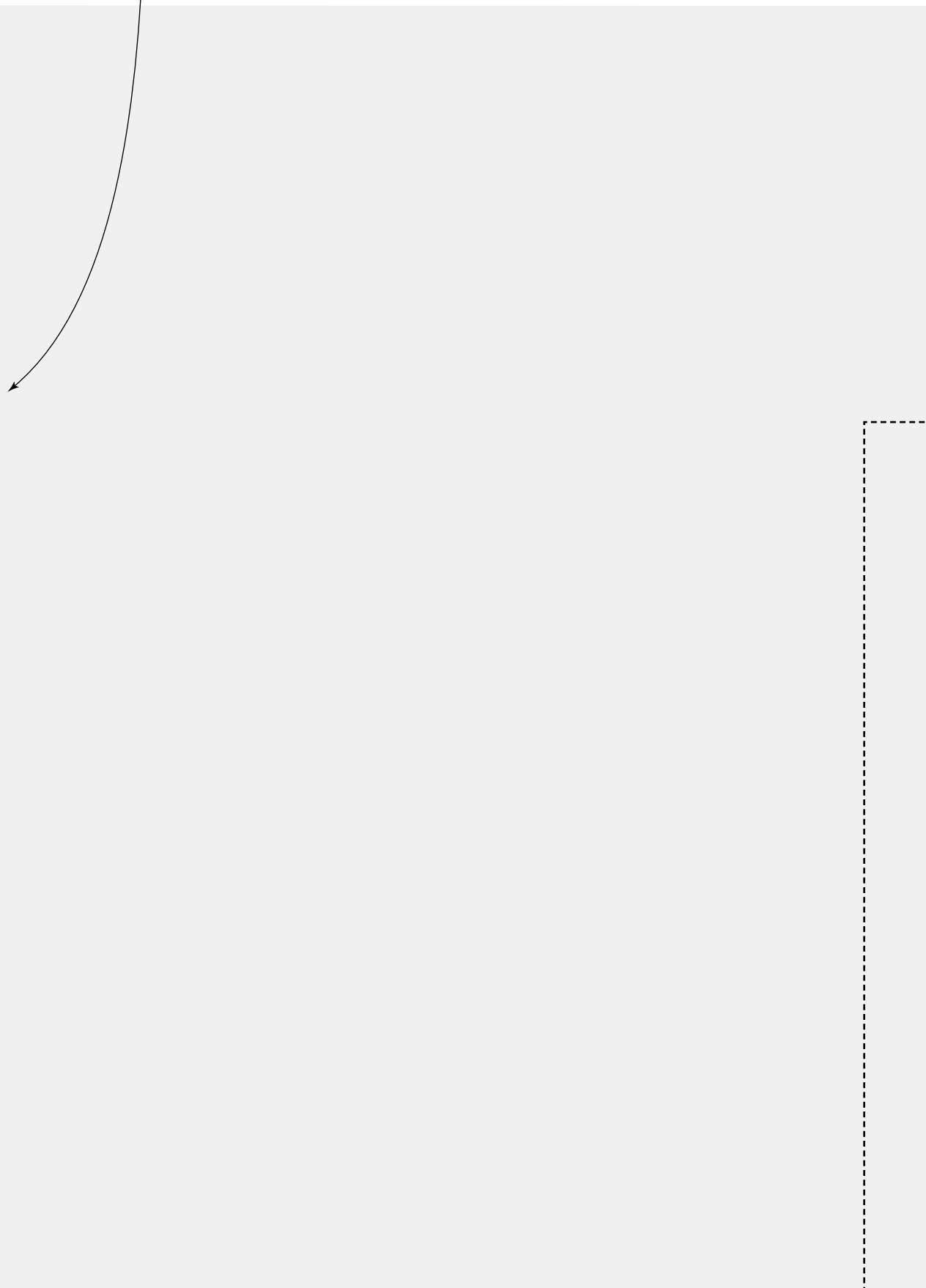


Reshape these edges
to match the underarm seam line



TYPE 3 Variation 1





TYPE 3 Variation 1

