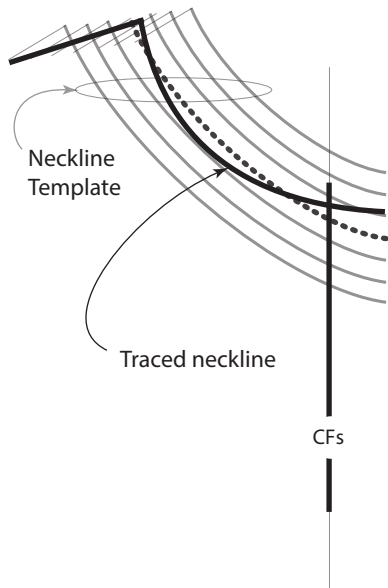


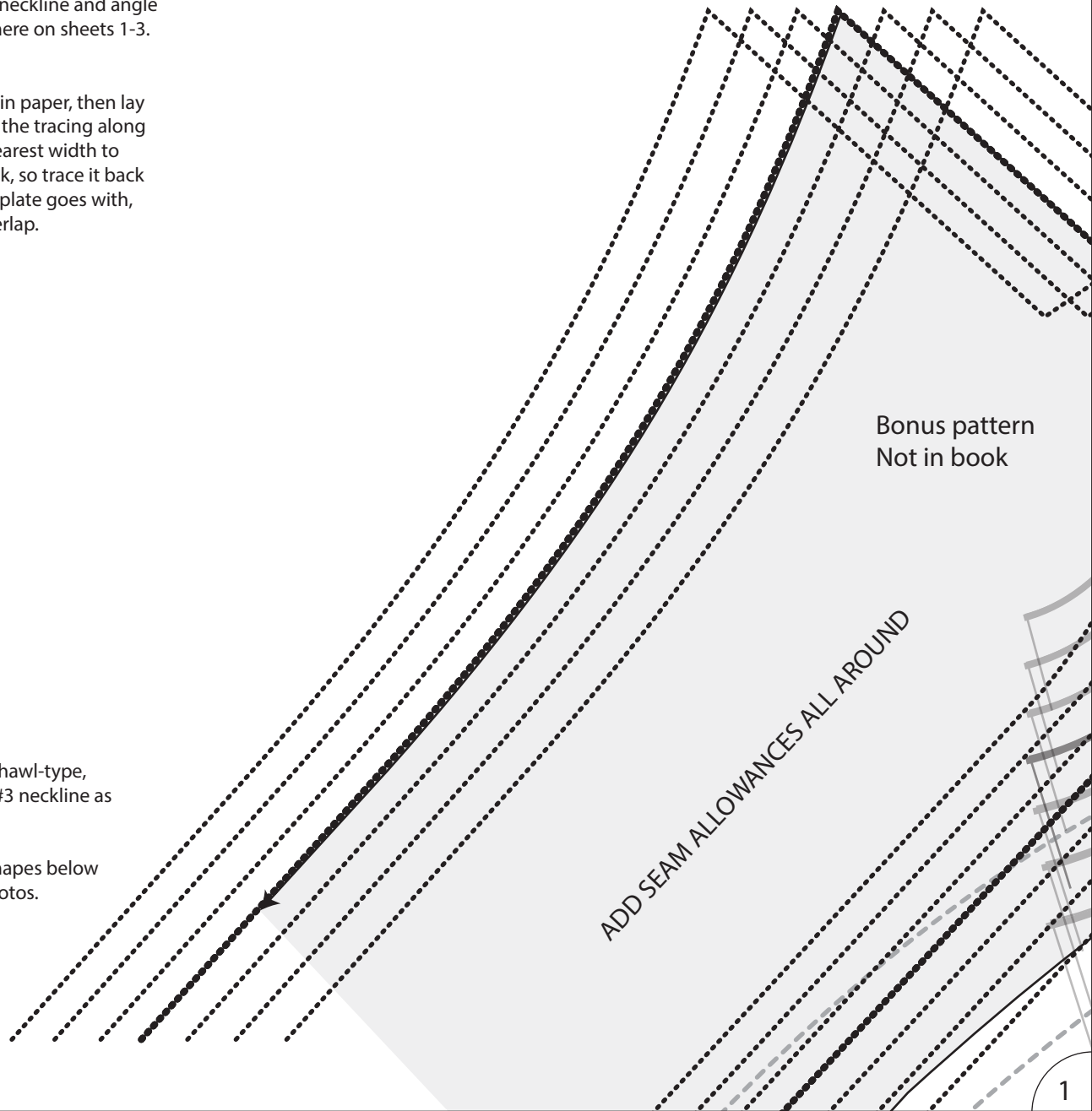
All these collars, except, the last three, are built on the same neckline and angle as in #3 from the 100-101-page patterns, which is repeated here on sheets 1-3. Directions for use the same:

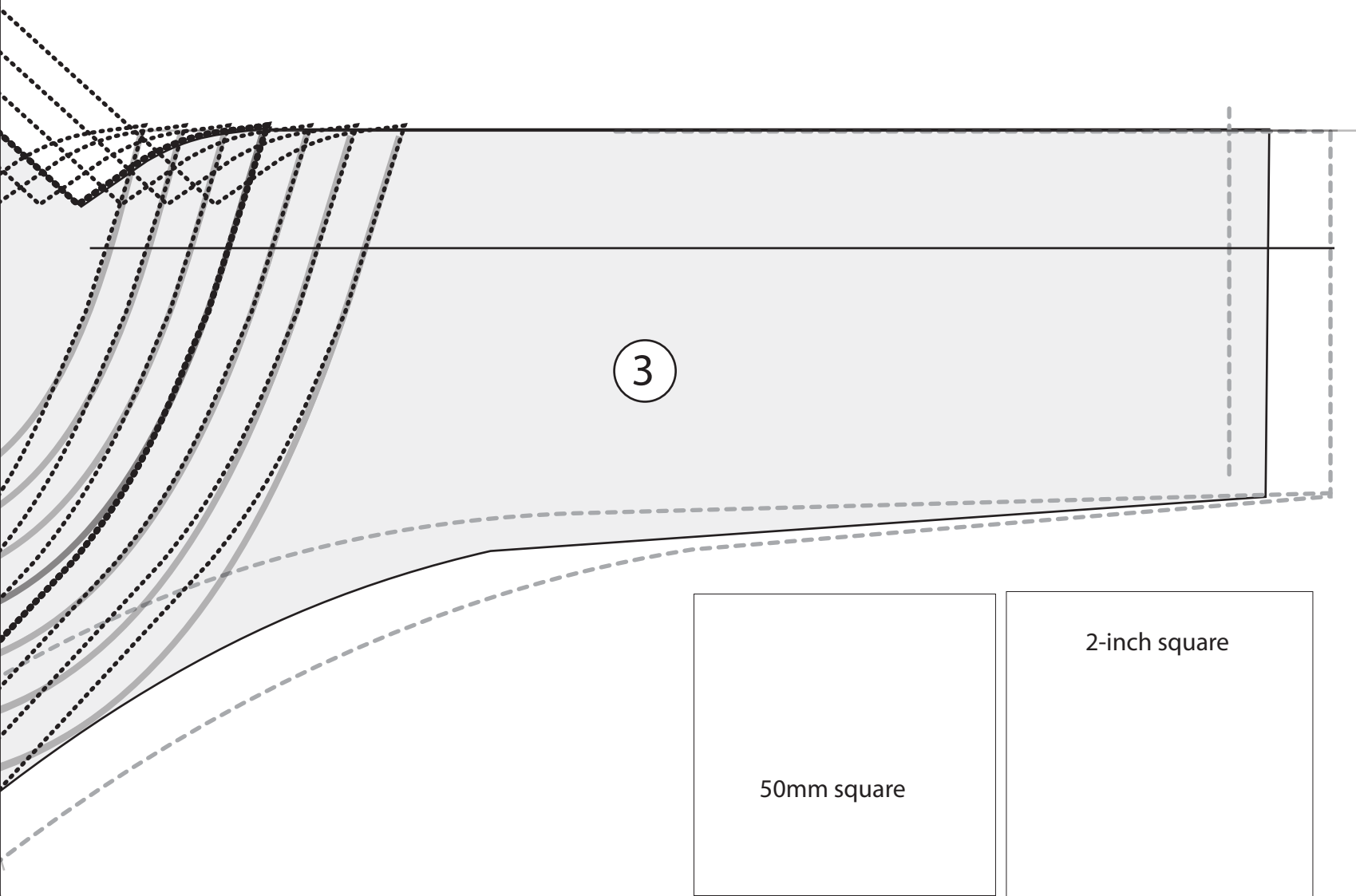
Trace your fitted neckline and CF, (no seam allowances) to thin paper, then lay the tracing over a template with CFs aligned as shown. Slide the tracing along the CF to locate the neckline on the template that has the nearest width to your's, but not narrower. That's the one to use with your block, so trace it back onto the front pattern you'll be using with the collar the template goes with, truing it with the existing back neckline and center-front overlap.



The last three patterns are experiments with a more classic shawl-type, scaled-up overall shape, overlaid in one case with the same #3 neckline as an option.

As before, the gray-filled shapes in the scaled under-collar shapes below are my original drafts and drapes, as shown in the muslin photos.



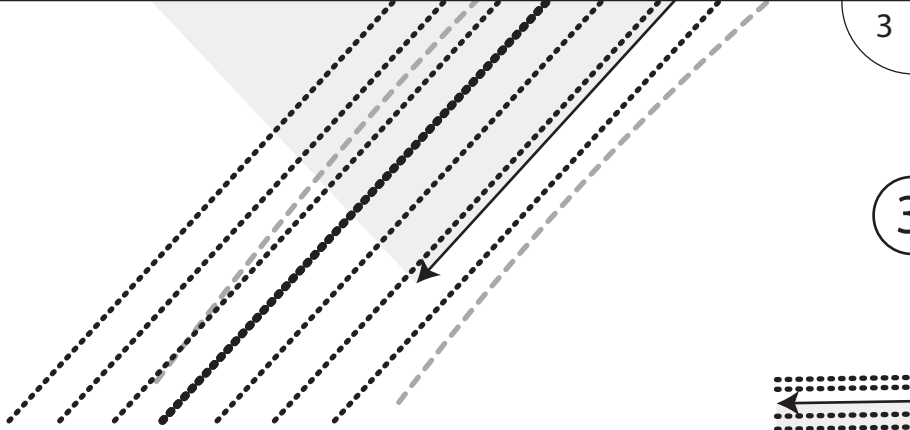


3

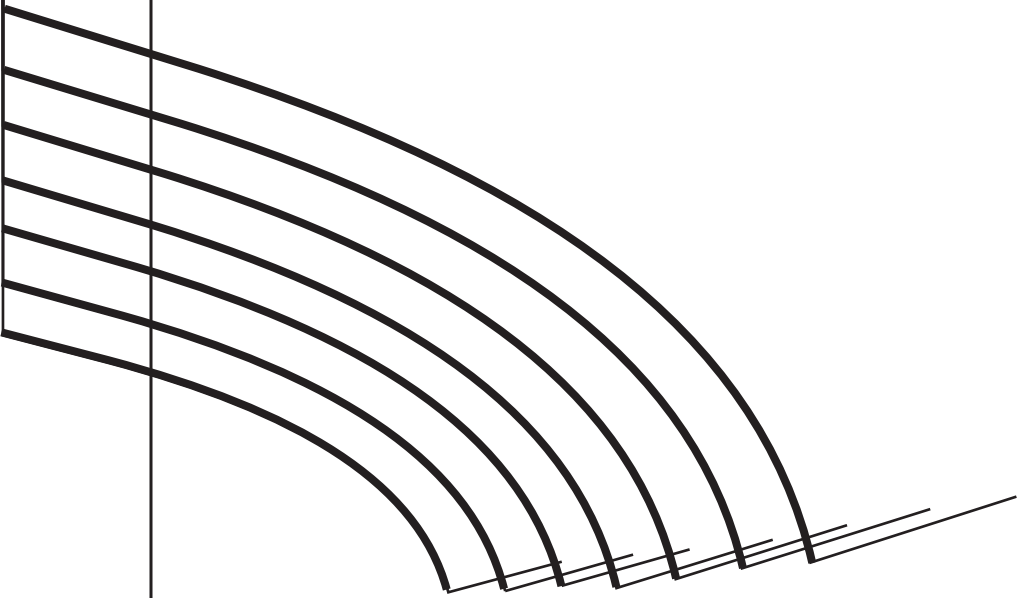
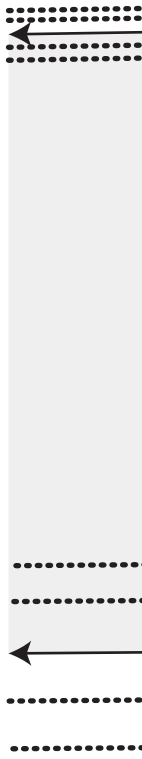
2

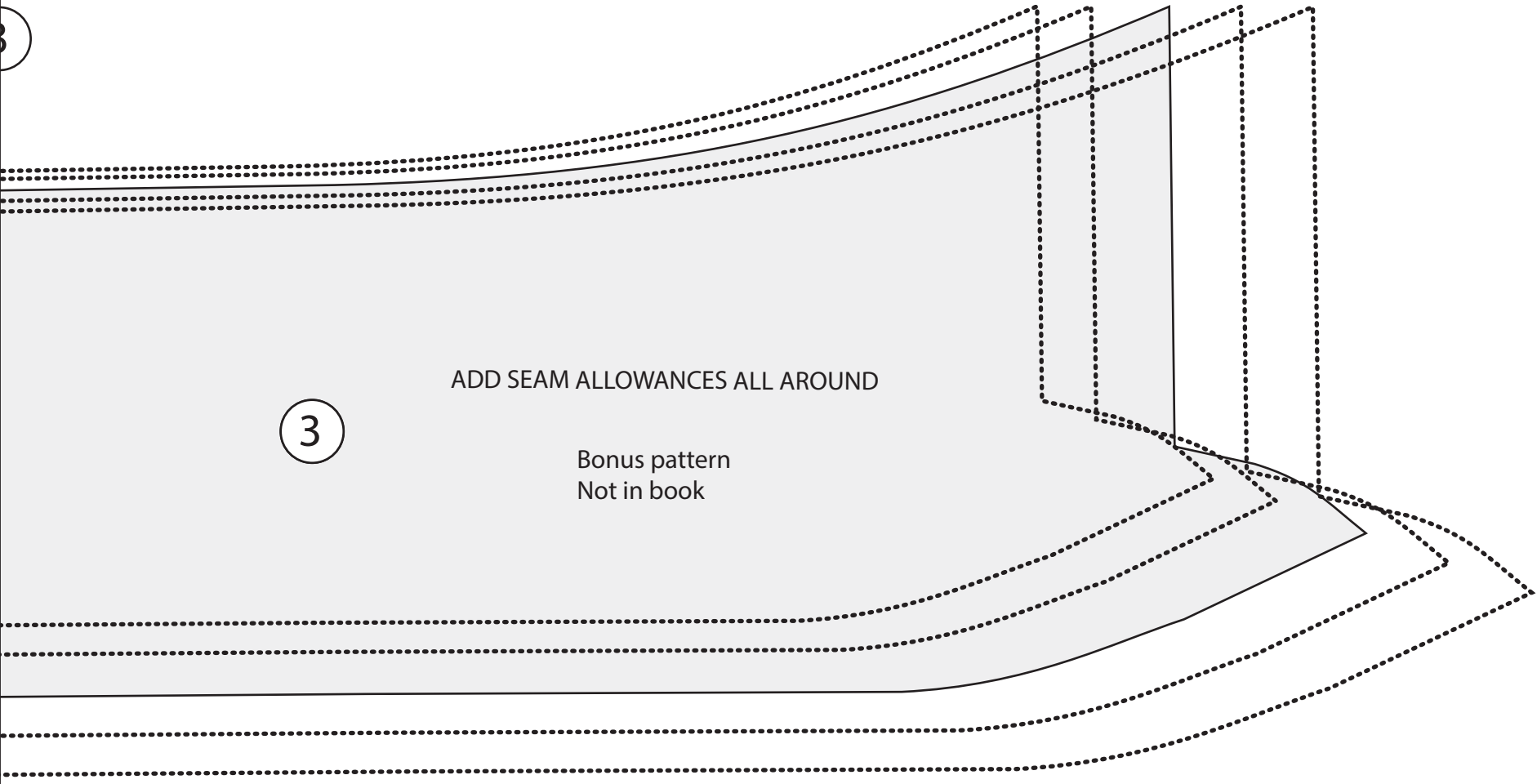
50mm square

2-inch square



3 NECKLINE TEMPLATE FOR PATTERN





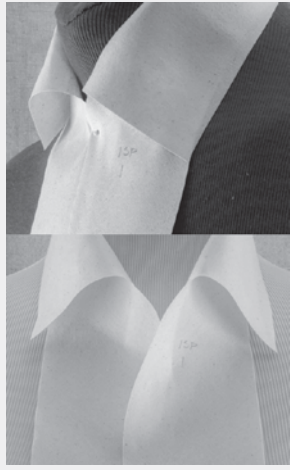
3

ADD SEAM ALLOWANCES ALL AROUND

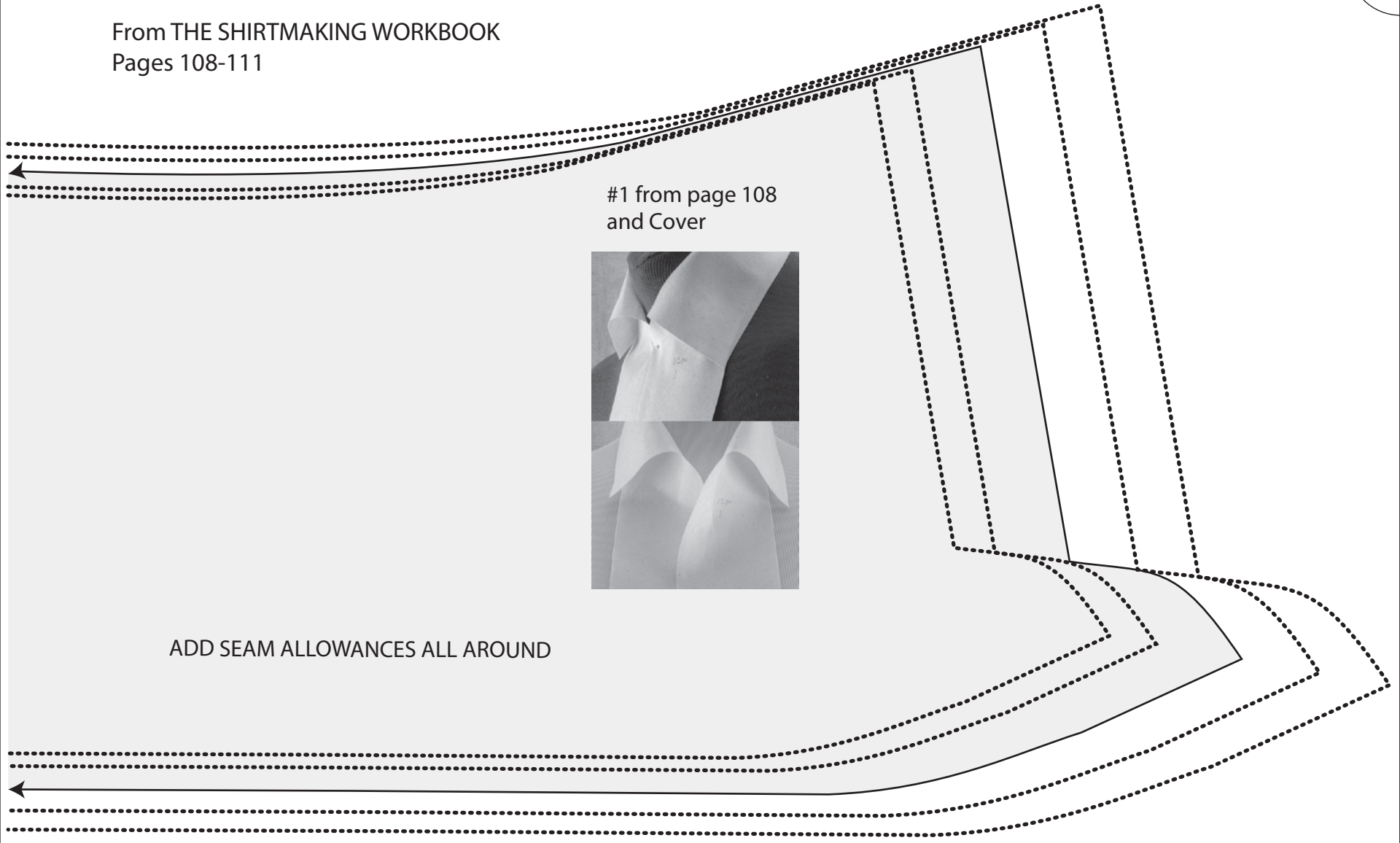
Bonus pattern
Not in book

From THE SHIRTMAKING WORKBOOK
Pages 108-111

#1 from page 108
and Cover

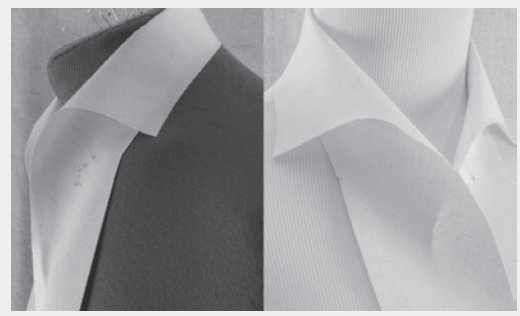


ADD SEAM ALLOWANCES ALL AROUND

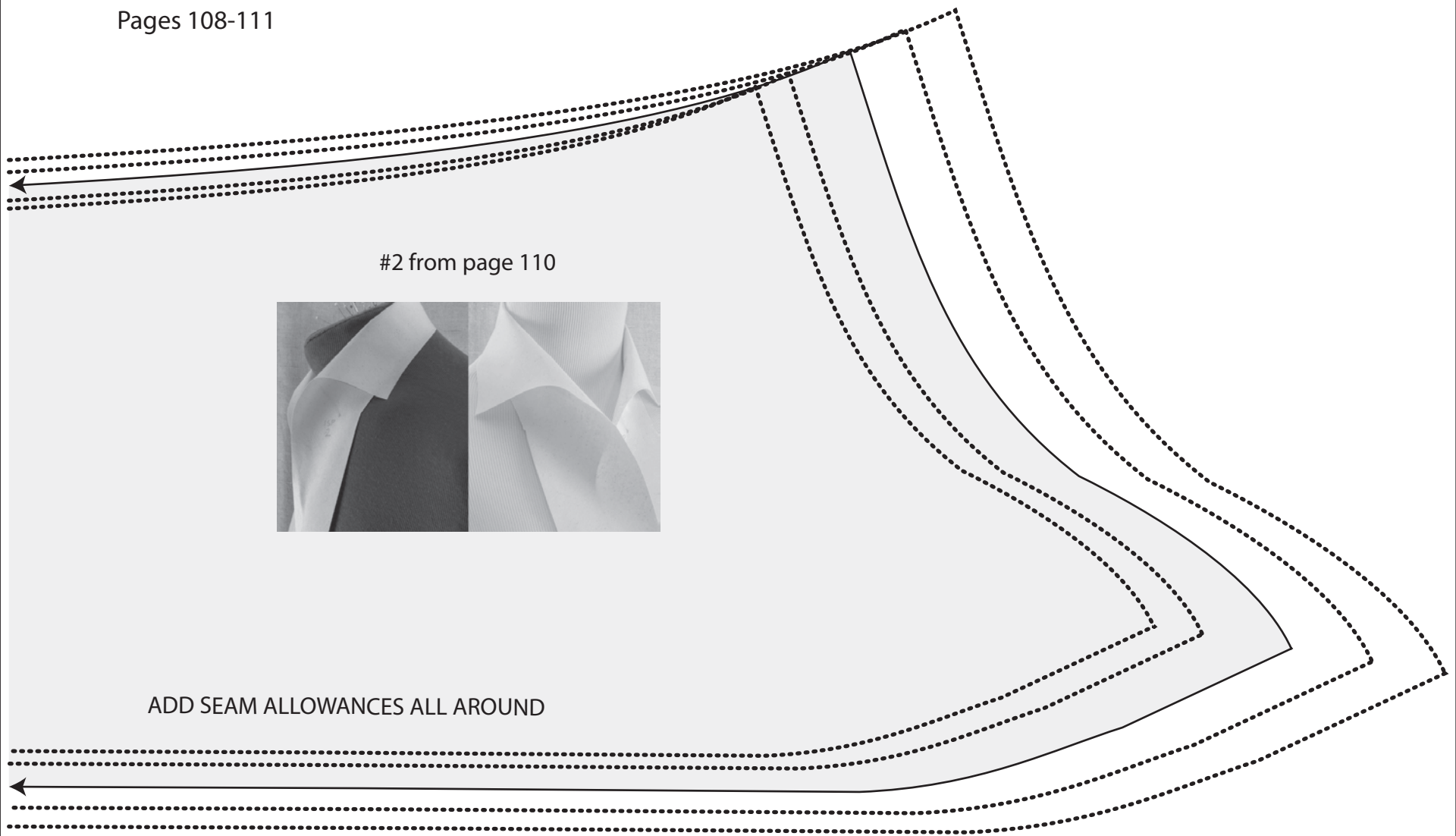


From THE SHIRTMAKING WORKBOOK
Pages 108-111

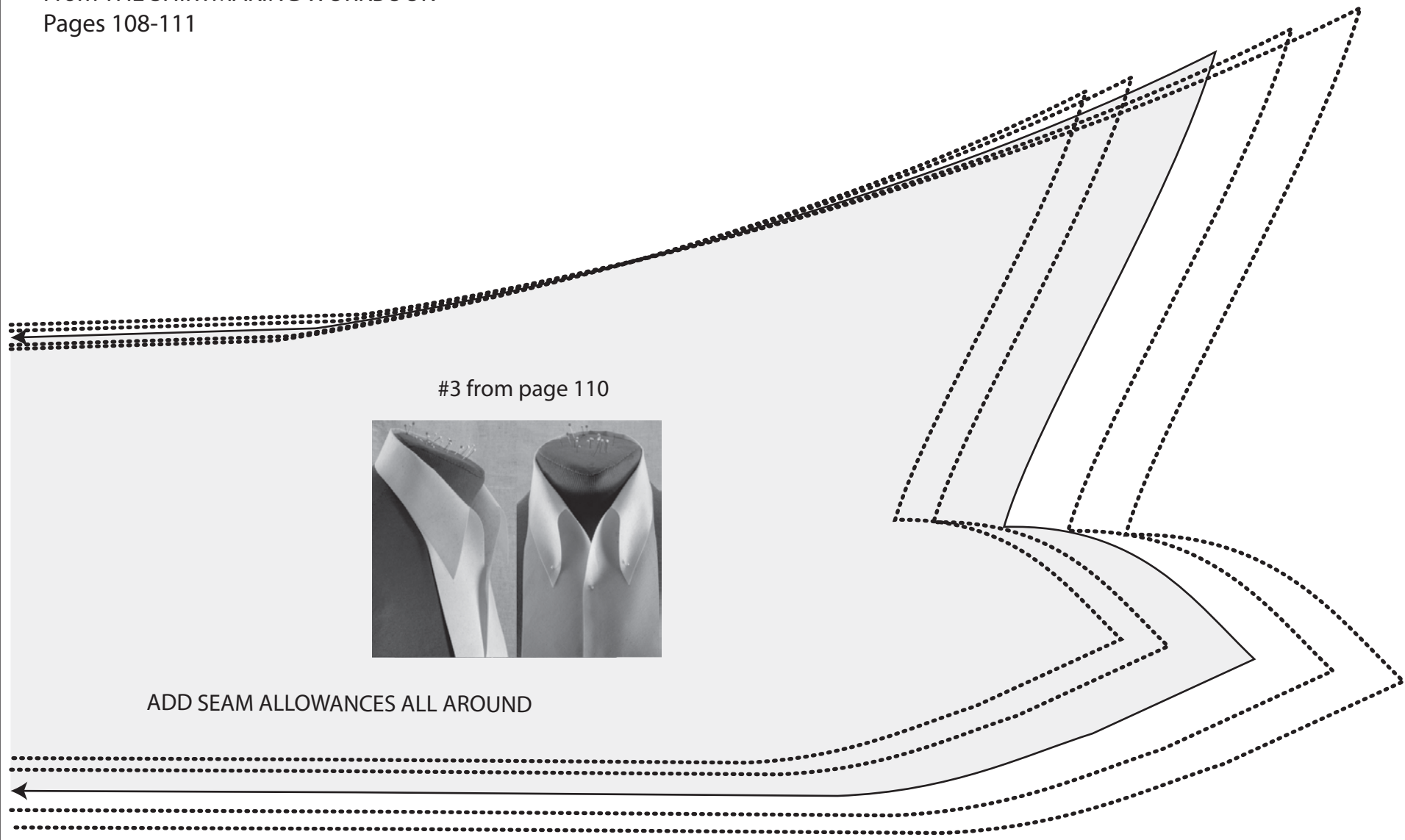
#2 from page 110



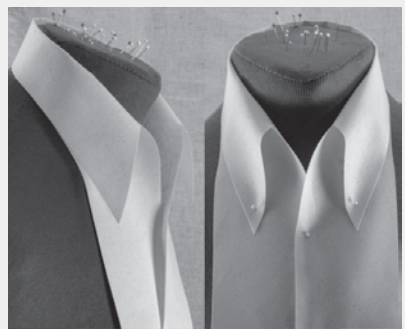
ADD SEAM ALLOWANCES ALL AROUND



From THE SHIRTMAKING WORKBOOK
Pages 108-111



#3 from page 110



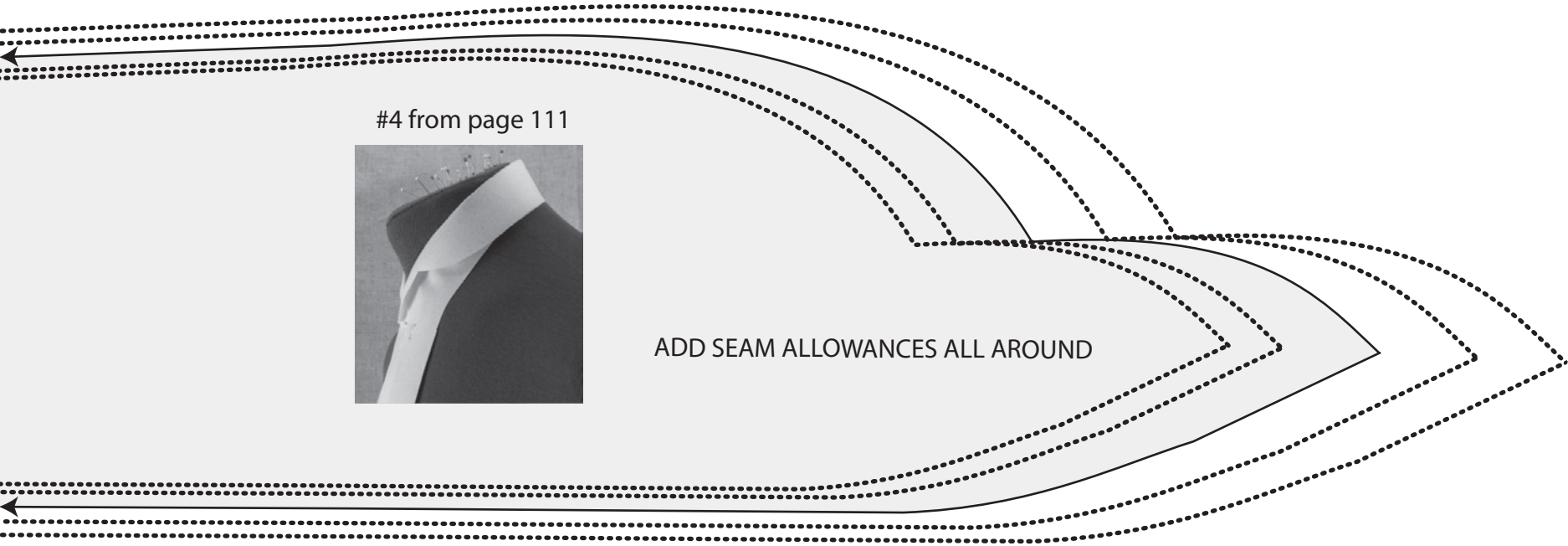
ADD SEAM ALLOWANCES ALL AROUND

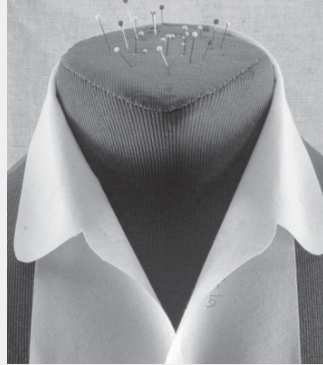
From THE SHIRTMAKING WORKBOOK
Pages 108-111

#4 from page 111



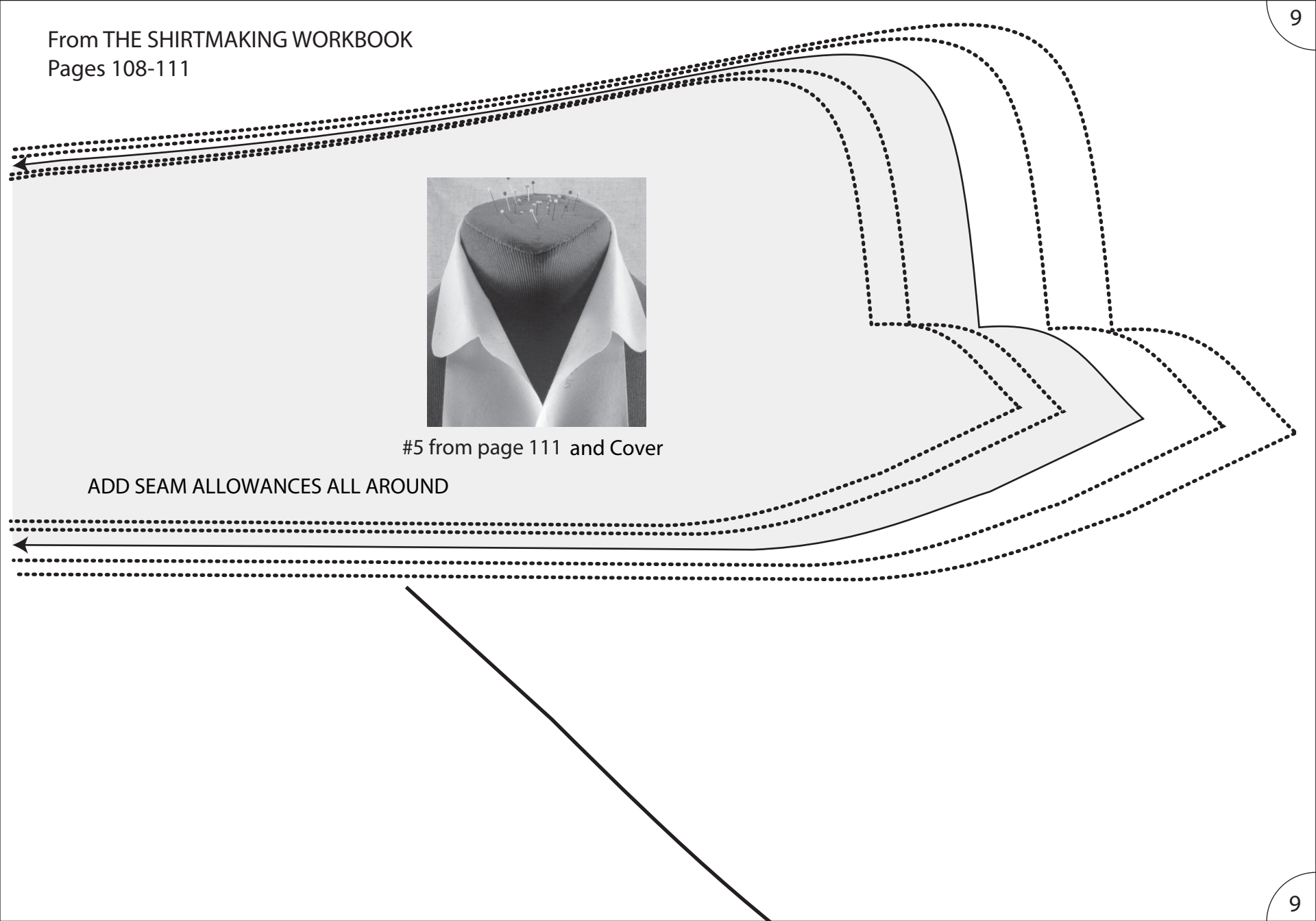
ADD SEAM ALLOWANCES ALL AROUND



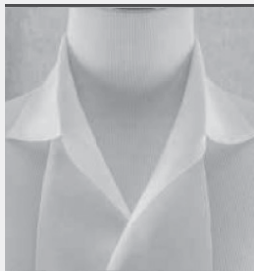


#5 from page 111 and Cover

ADD SEAM ALLOWANCES ALL AROUND



From THE SHIRTMAKING WORKBOOK
Pages 108-111

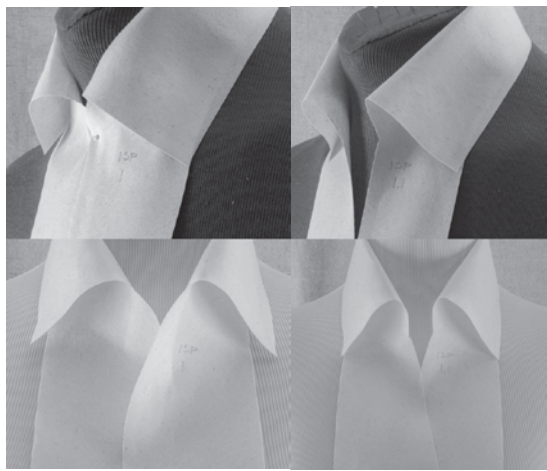


#6 from Online Extra Page

ADD SEAM ALLOWANCES ALL AROUND



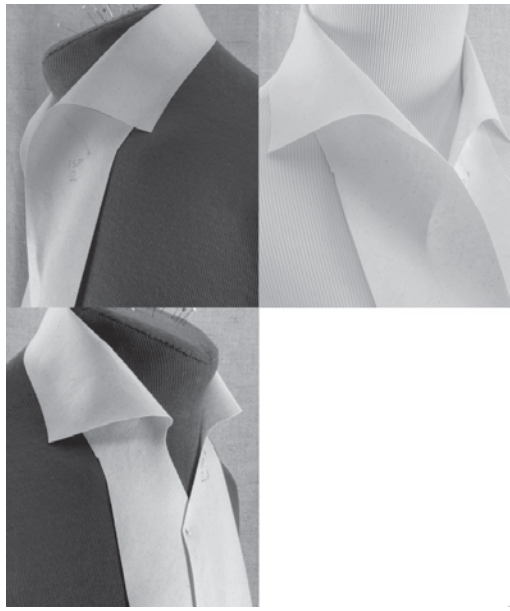
ADD SEAM ALLOWANCES ALL AROUND



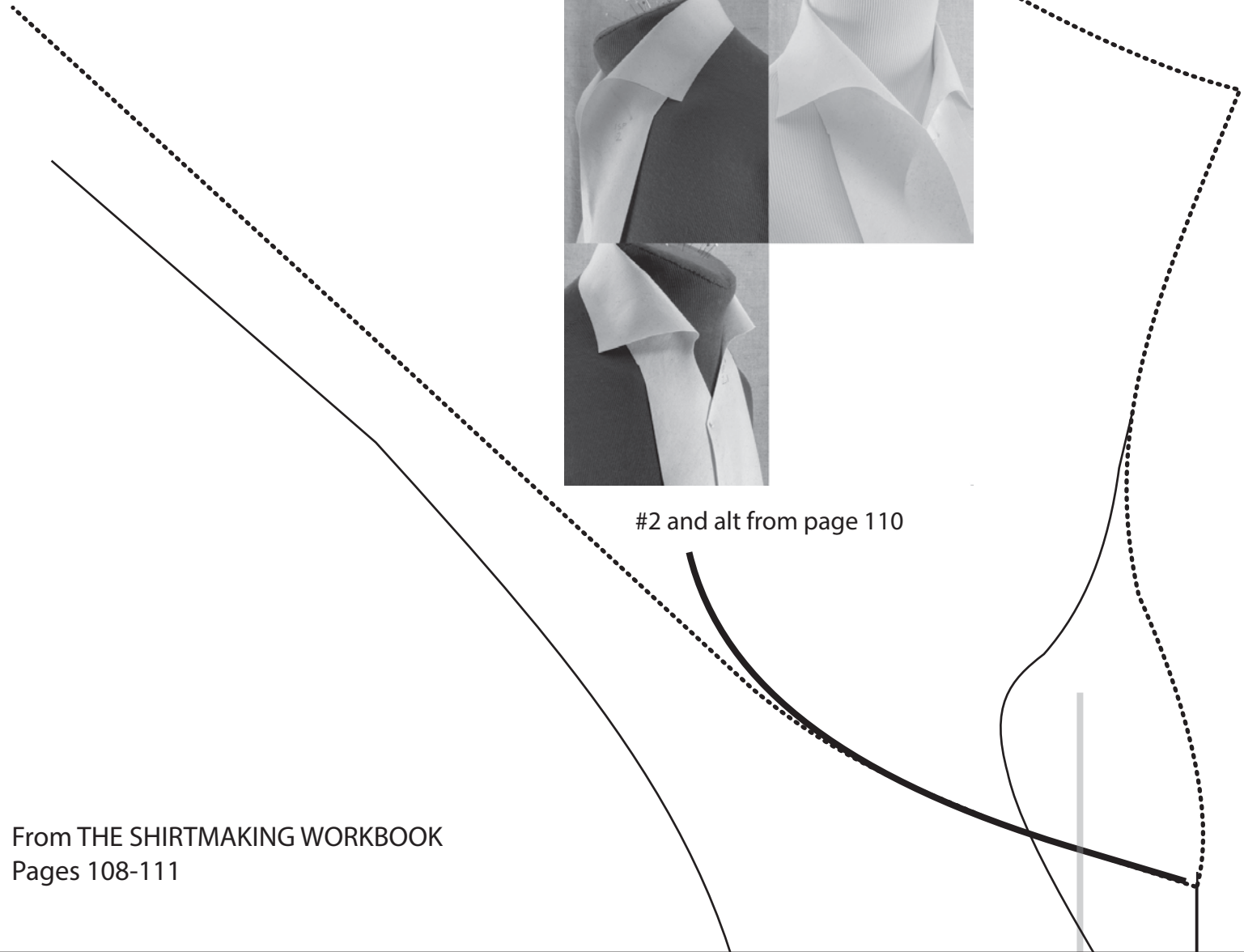
#1 and alt from page 109

From THE SHIRTMAKING WORKBOOK
Pages 108-111

ADD SEAM ALLOWANCES ALL AROUND



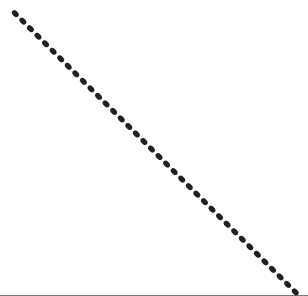
#2 and alt from page 110



From THE SHIRTMAKING WORKBOOK
Pages 108-111

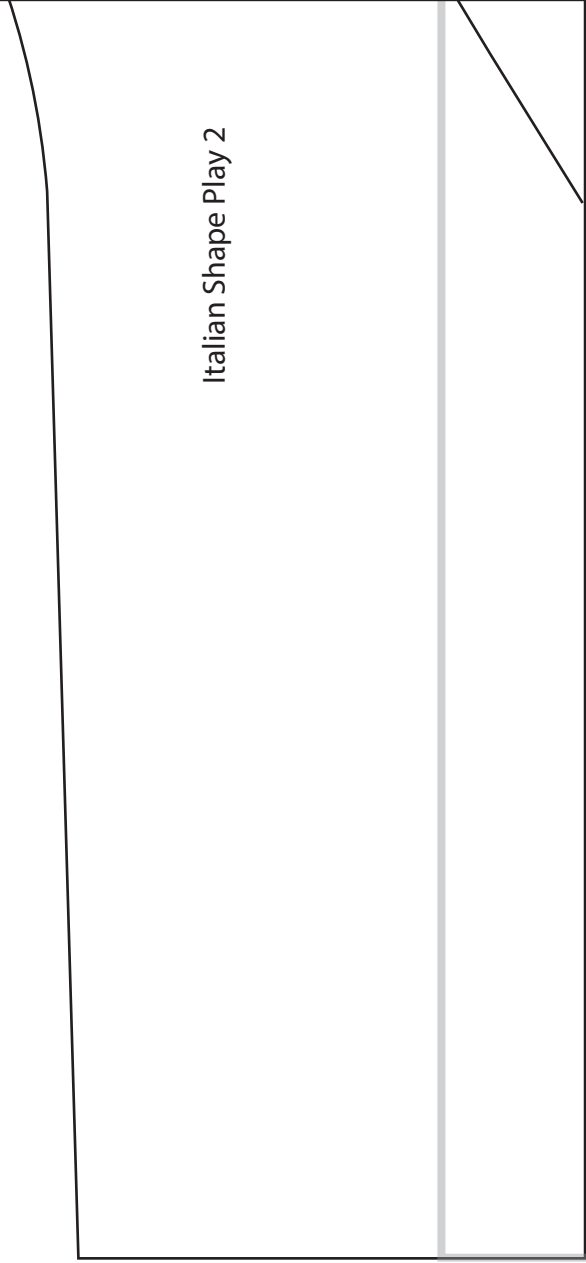
From THE SHIRTMAKING WORKBOOK
Pages 108-111

Italian Shape Play 1



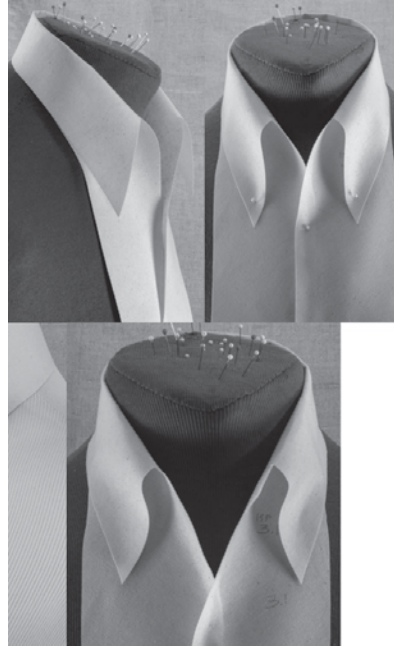
From THE SHIRTMAKING WORKBOOK
Pages 108-111

Italian Shape Play 2



ADD SEAM ALLOWANCES ALL AROUND

From THE SHIRTMAKING WORKBOOK
Pages 108-111



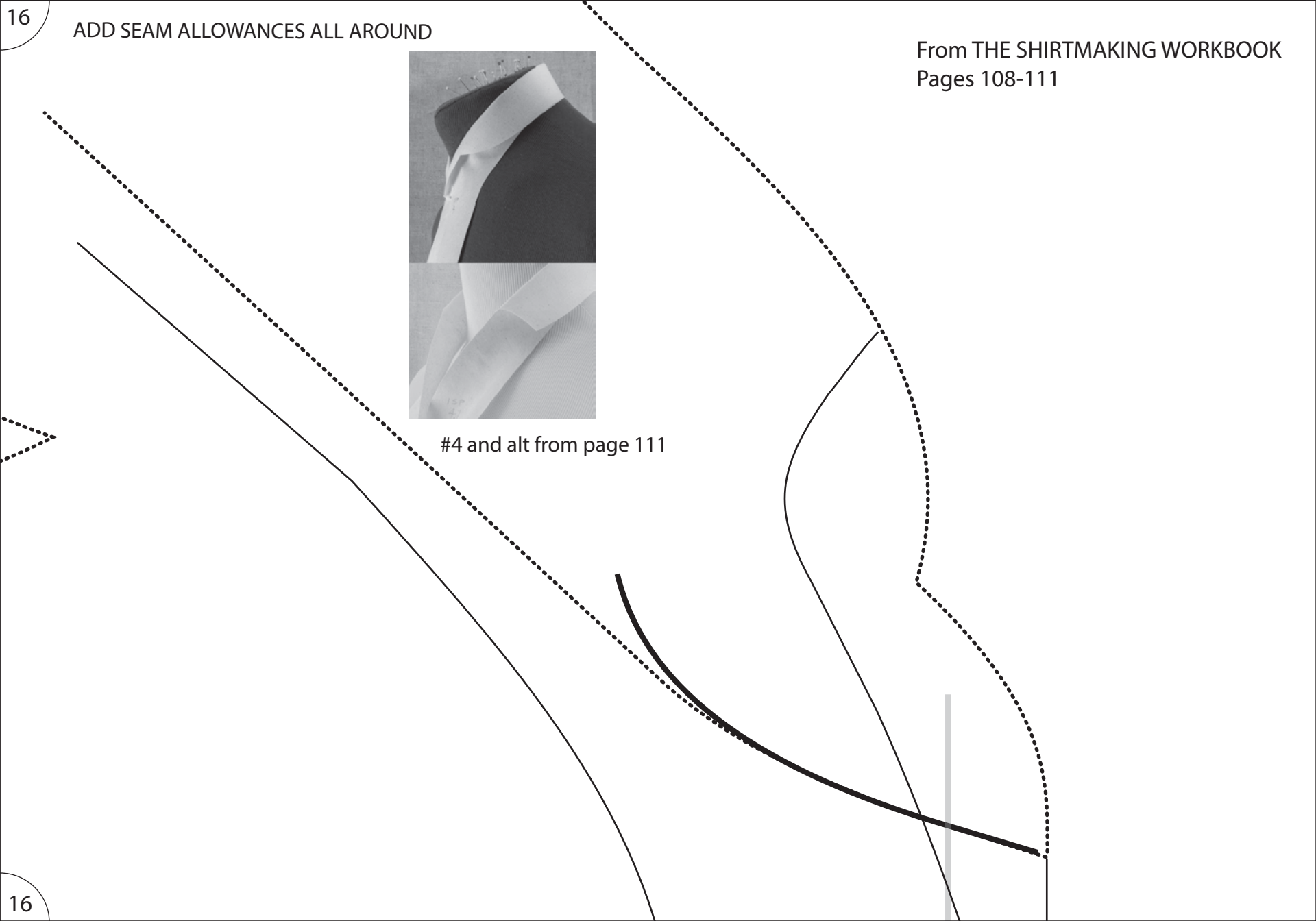
#3 and alt from page 110

ADD SEAM ALLOWANCES ALL AROUND

From THE SHIRTMAKING WORKBOOK
Pages 108-111



#4 and alt from page 111

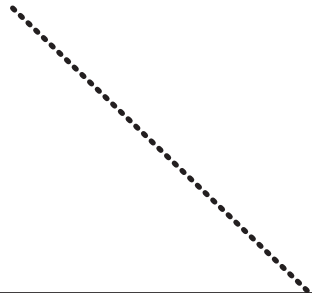


From THE SHIRTMaking WORKBOOK
Pages 108-111

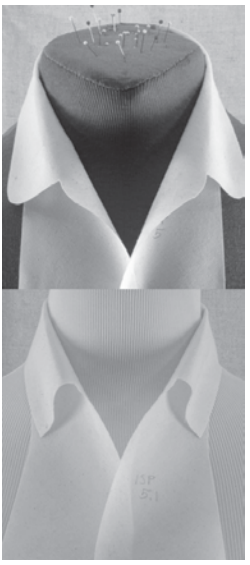
Italian Shape Play 3

From THE SHIRTMAKING WORKBOOK
Pages 108-111

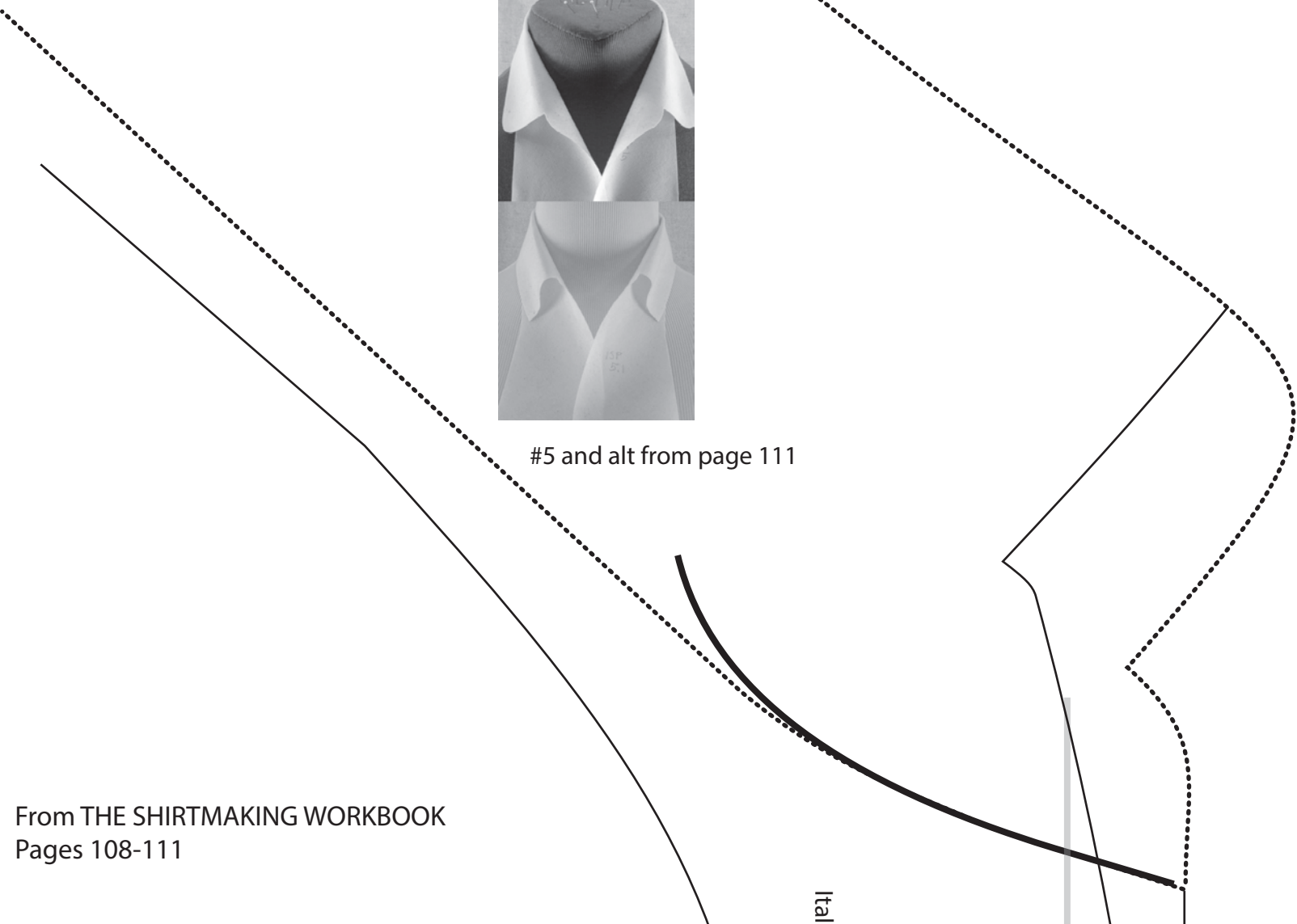
Italian Shape Play 4



ADD SEAM ALLOWANCES ALL AROUND



#5 and alt from page 111



From THE SHIRTMAKING WORKBOOK
Pages 108-111

Itali

ADD SEAM ALLOWANCES ALL AROUND

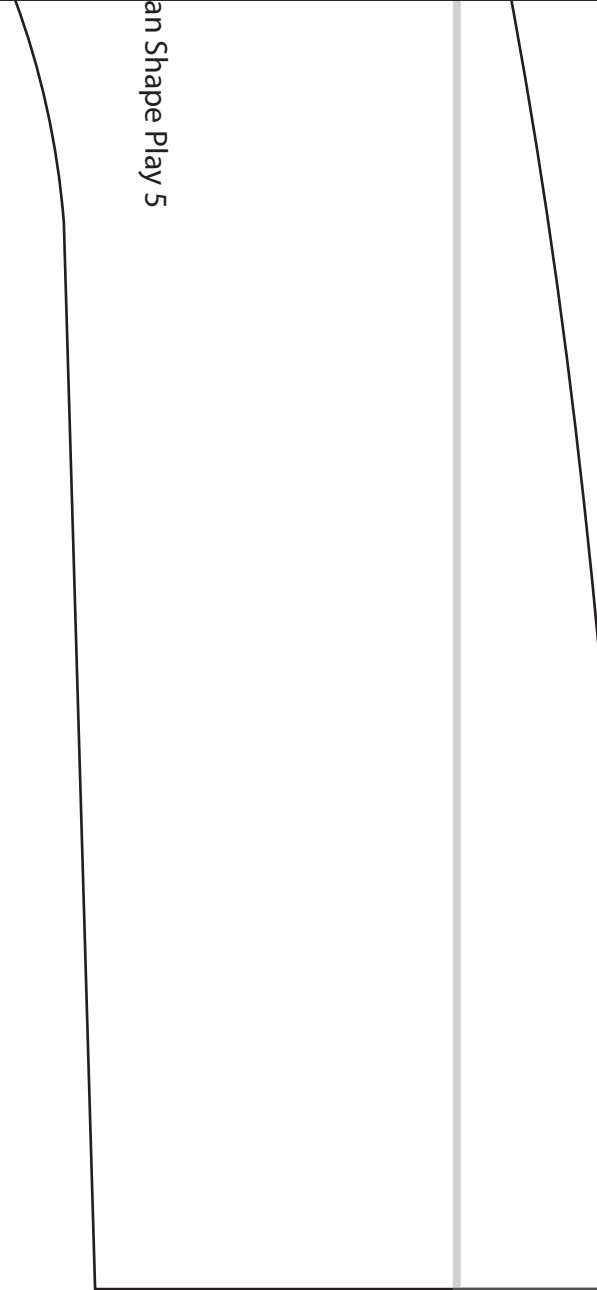


#6 and alt from Online Extra Pages

From THE SHIRTMAKING WORKBOOK
Pages 108-111 Online Content

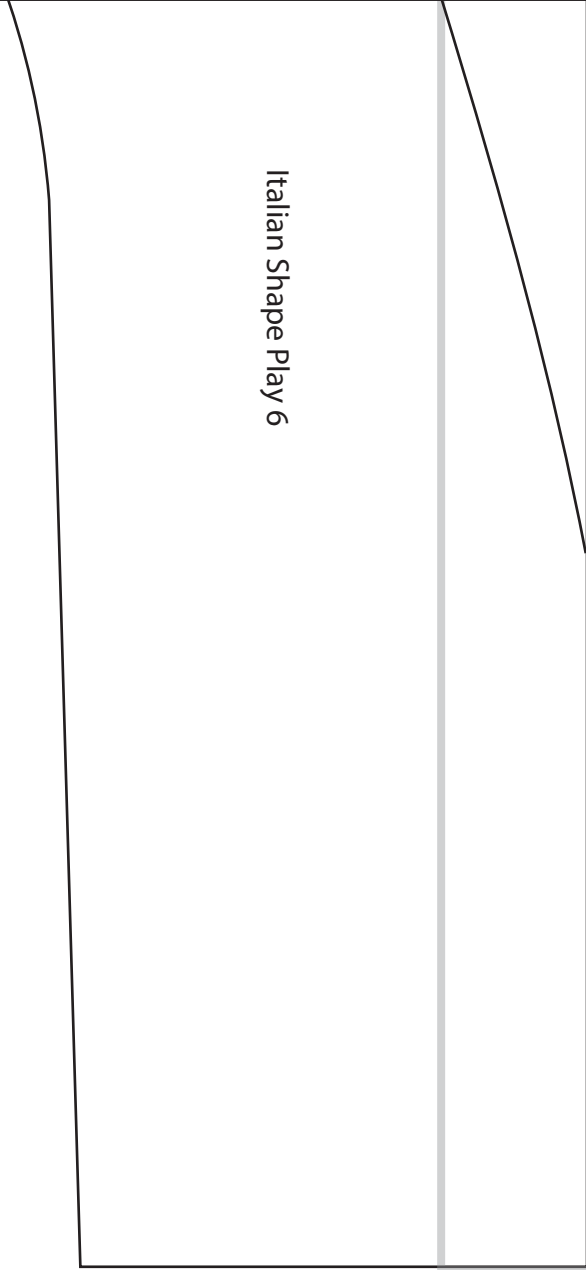
From THE SHIRTMaking WORKBOOK
Pages 108-111

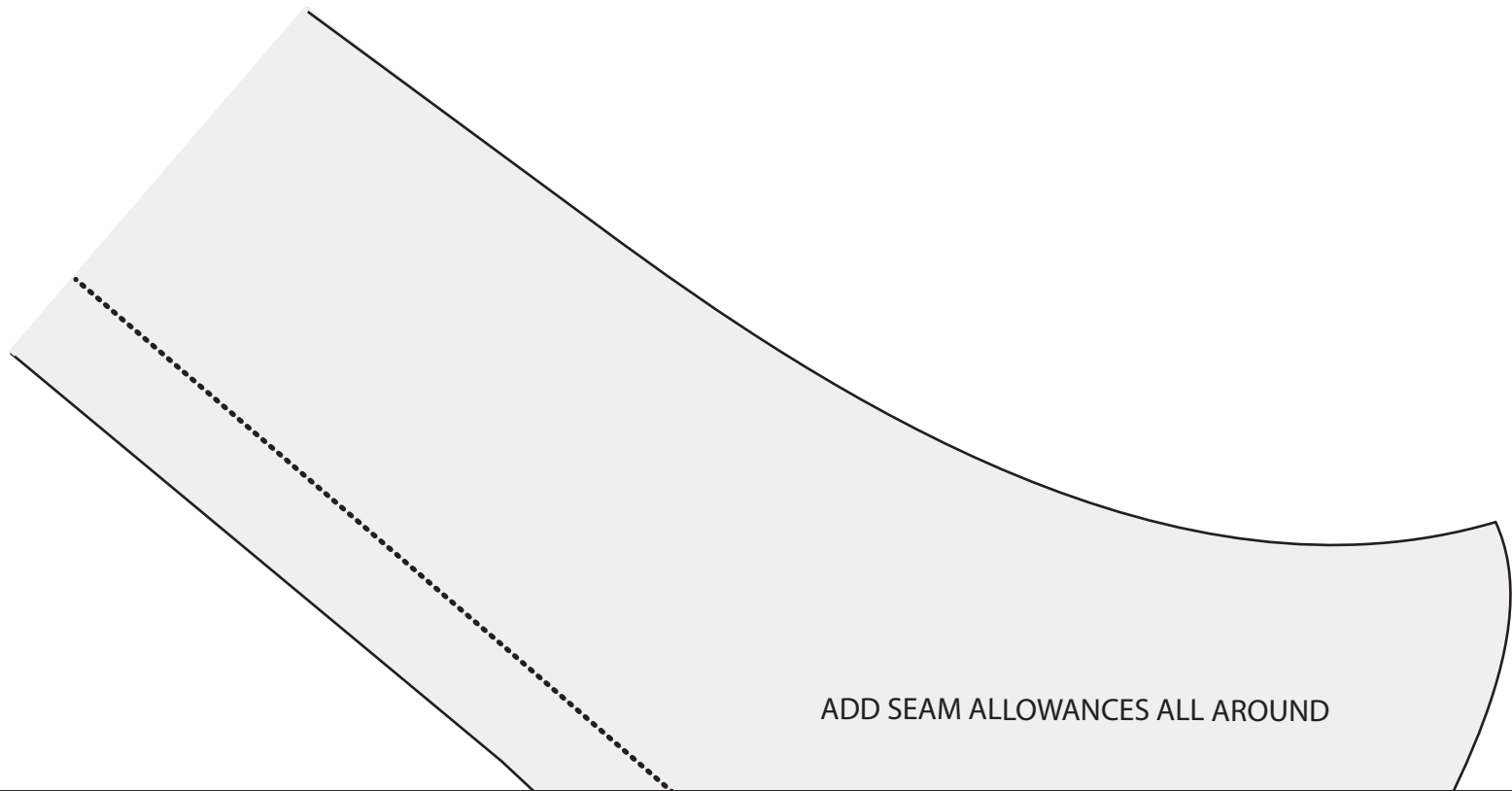
an Shape Play 5



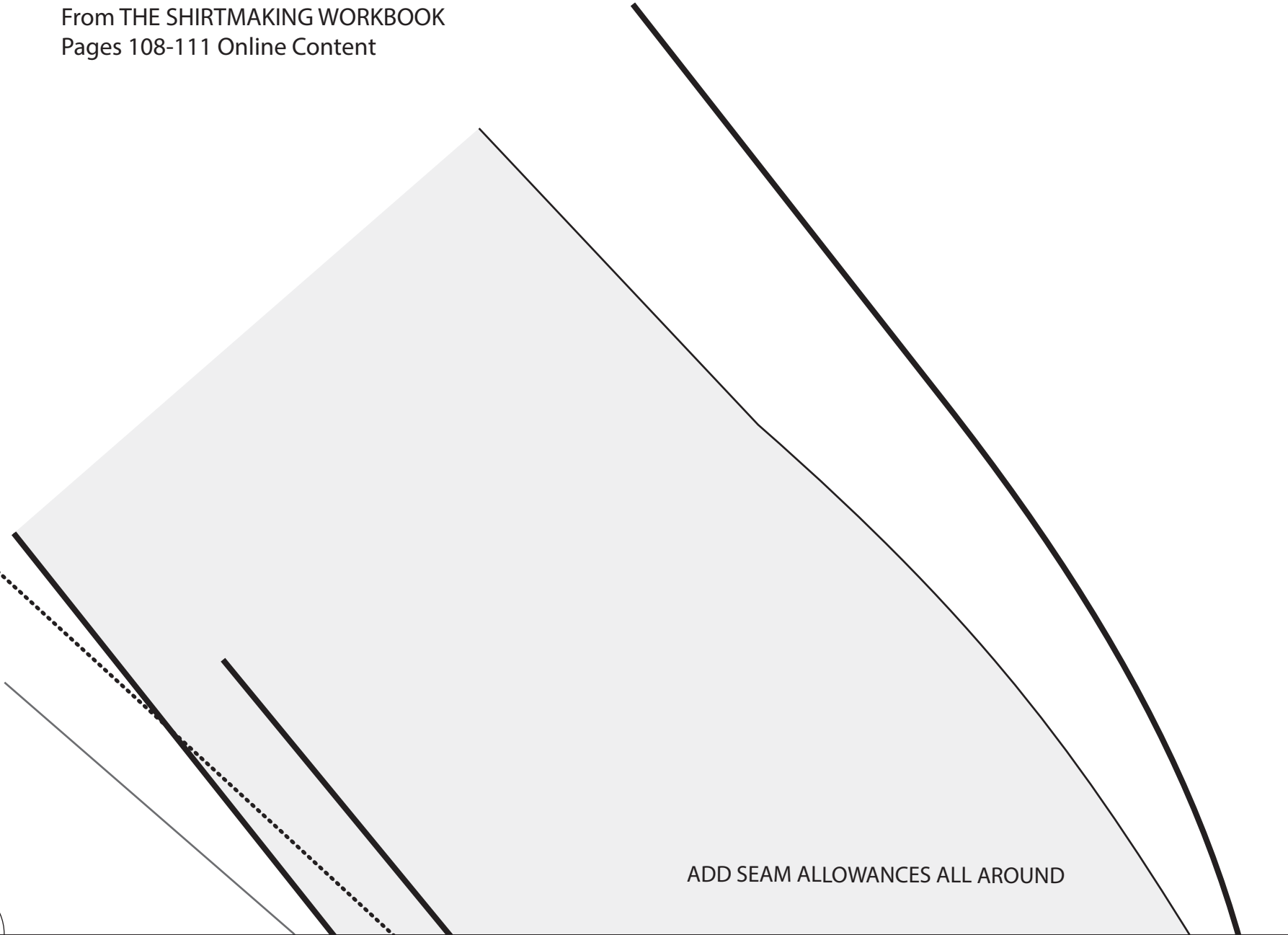
From THE SHIRTMaking WORKBOOK
Pages 108-111 Online Content

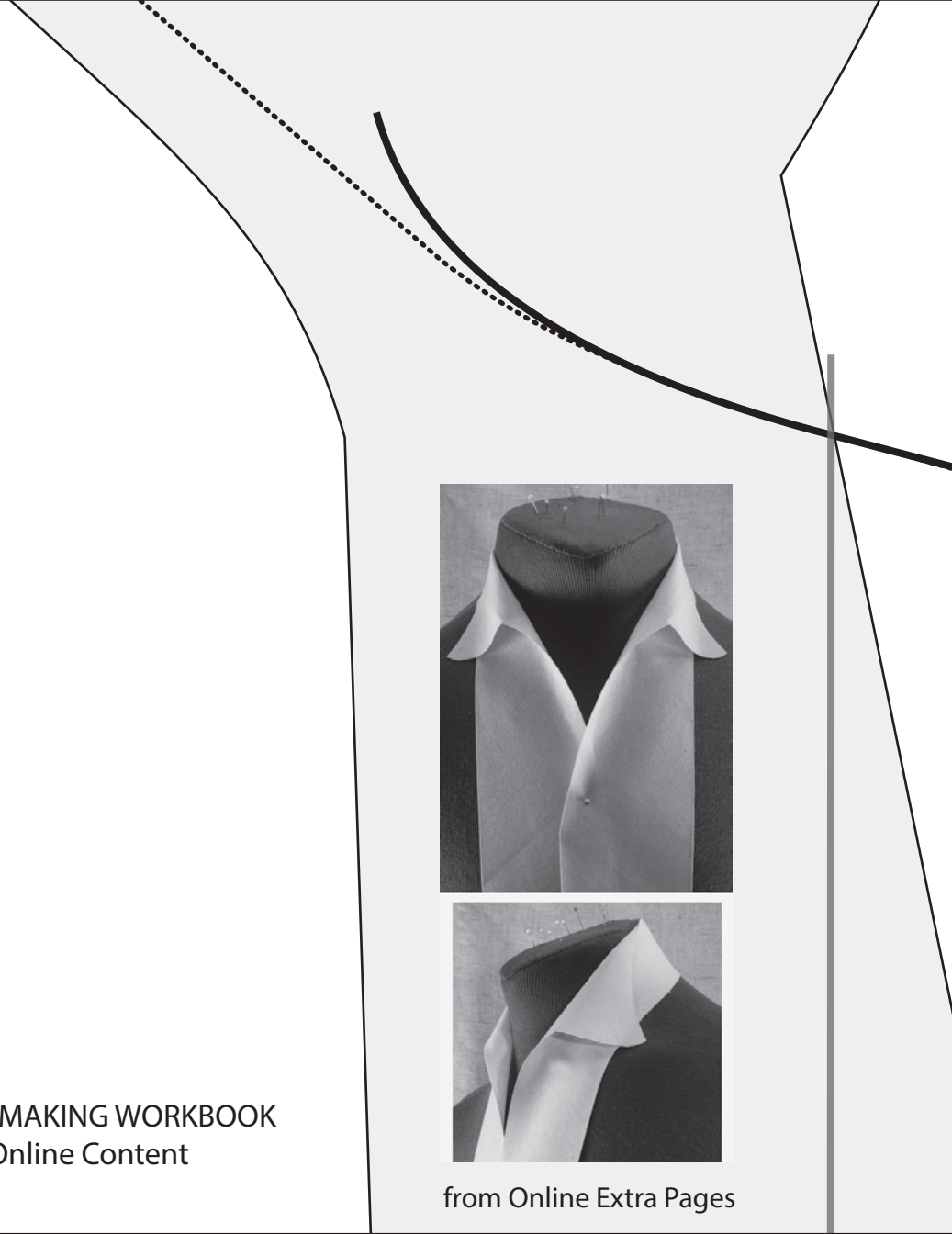
Italian Shape Play 6





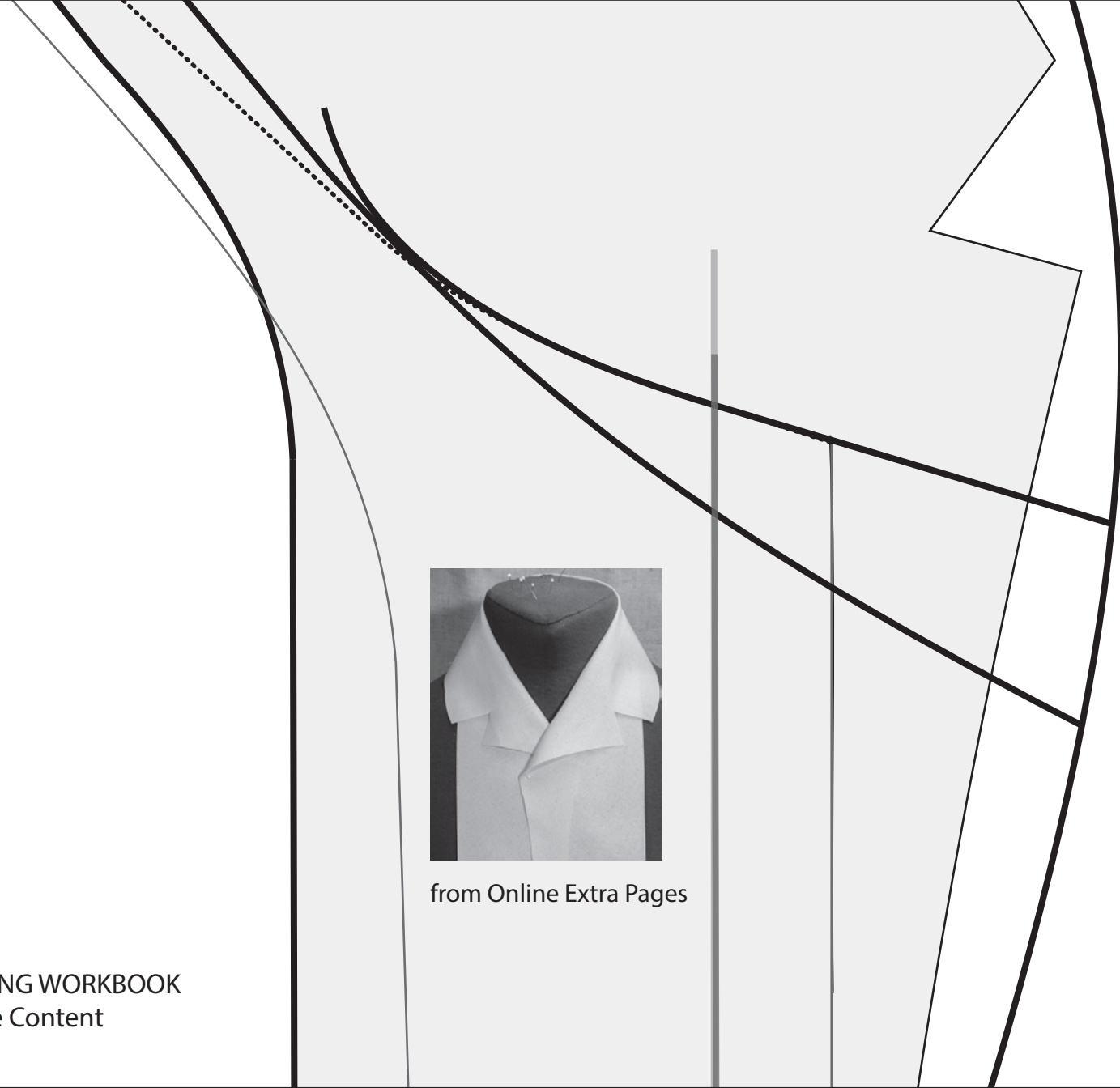
ADD SEAM ALLOWANCES ALL AROUND





From THE SHIRTMAKING WORKBOOK
Pages 108-111 Online Content

from Online Extra Pages



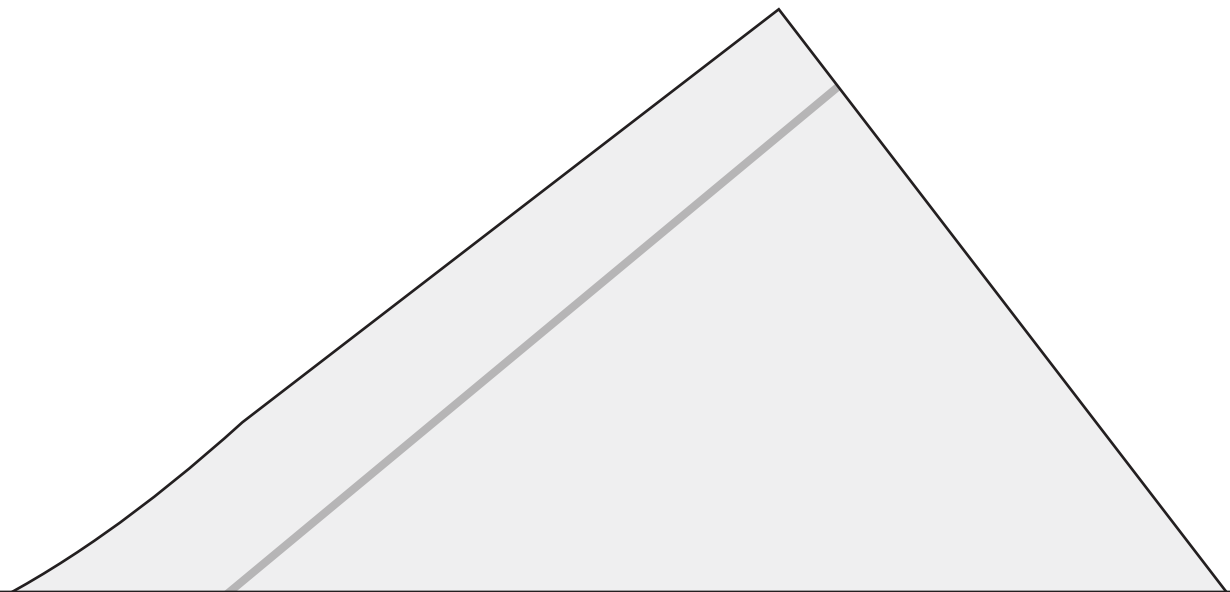
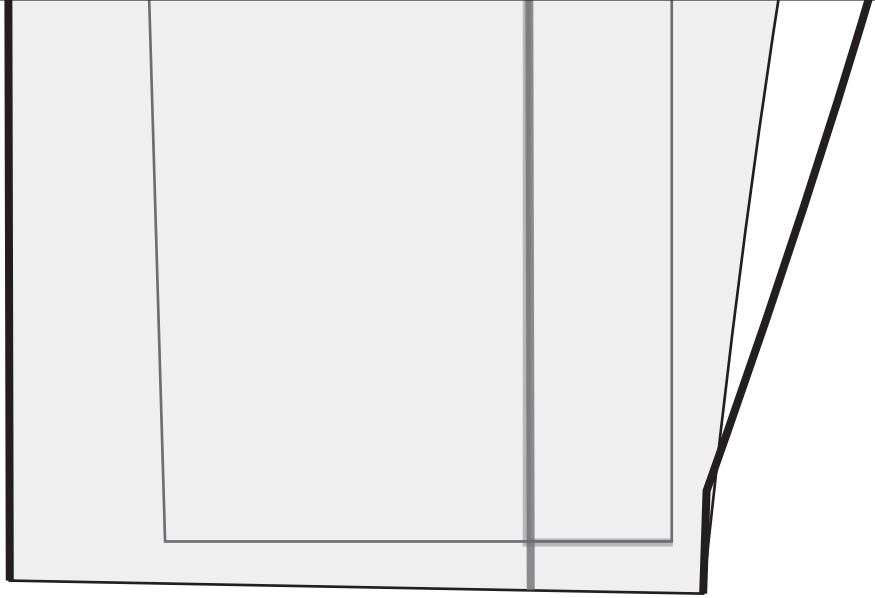
from Online Extra Pages

From THE SHIRTMaking WORKBOOK
Pages 108-111 Online Content

From THE SHIRTMaking WORKBOOK
Pages 108-111 Online Content

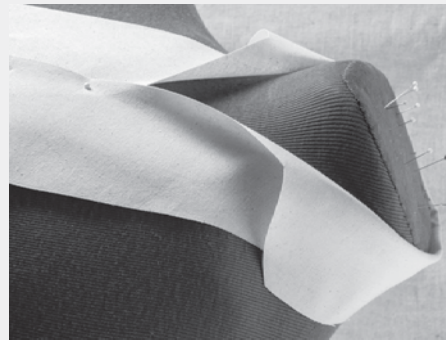


From THE SHIRTMAKING WORKBOOK
Pages 108-111 Online Content



ADD SEAM ALLOWANCES ALL AROUND

from Online Extra Pages



From THE SHIRTMaking WORKBOOK
Pages 108-111 Online Content



From THE SHIRTMaking WORKBOOK
Pages 108-111 Online Content