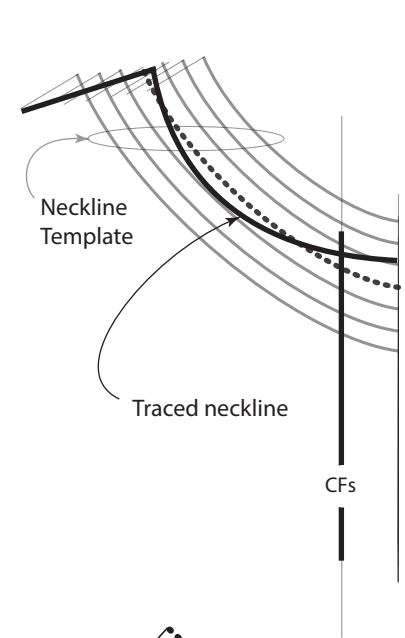


These three collar shapes are built on two different neckline curves; 1 and 2, shown in the book photos on p.100-101, are on the same low sporty neckline; 3 is on a higher curve, more like a dress-shirt.

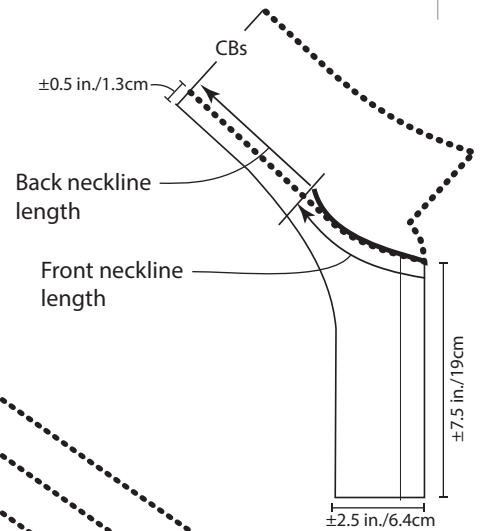
Note how 1's under-collar's neckline curve doesn't match the neckline curve, while 2's curve more or less exactly matches the neckline, as suited to their different overall angles in relation to the center fronts. 3's under-collar's neckline curve matches in front, but goes straighter as it moves to the back, as suited to its in-between collar angle. Each collar's outer edges could be shaped in any way; these shapes are typical of patterns and garments from when these collars were most popular.



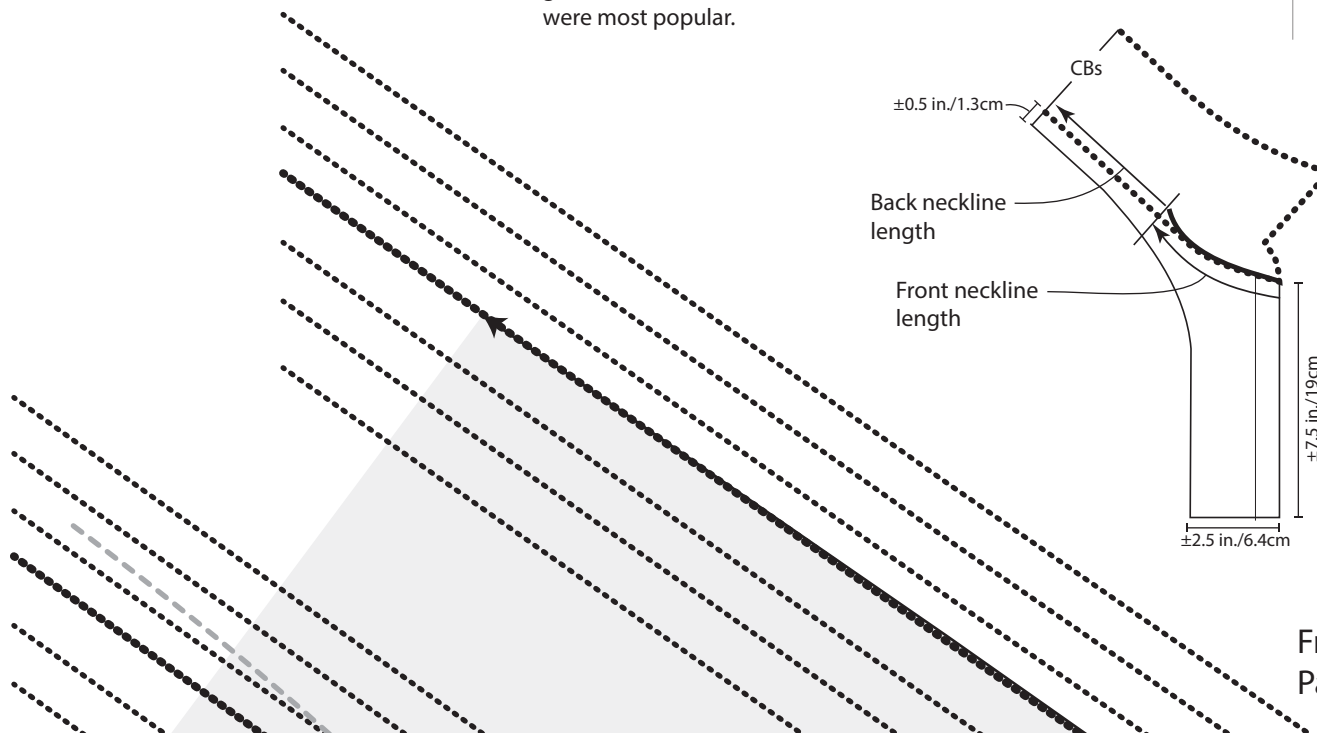
To match these patterns to your shirt block's fitted neckline, use the Neckline Templates at the end of the file. (There are two for necklines 1 and 2, even though these are the same shape, because I made two of them by mistake, then couldn't decide which was better, so left them both, since together they cover a wider range of options. Use either collar 1 or 2 with either template.)

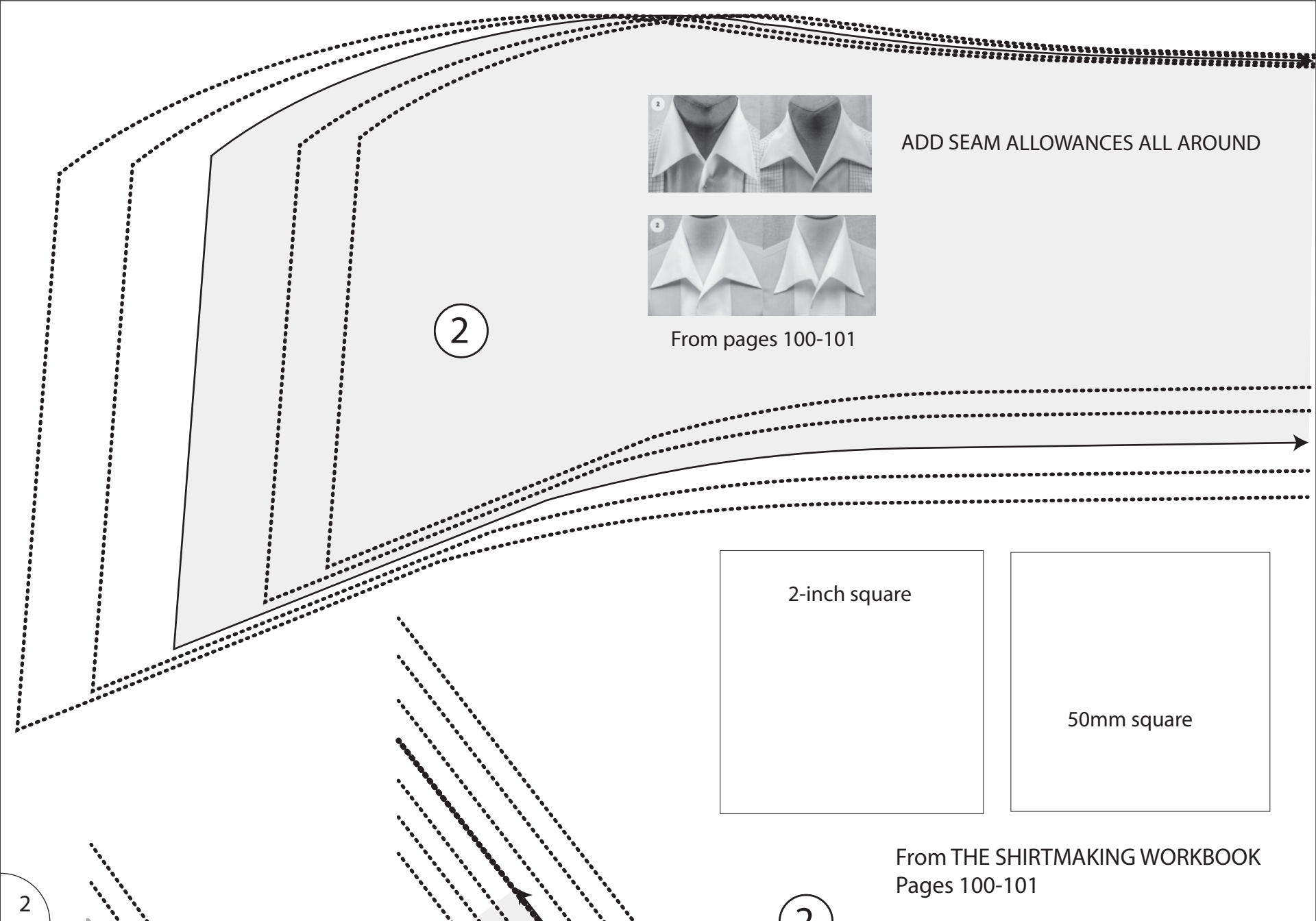
Trace your fitted neckline and CF, (no seam allowances) to thin paper, then lay the tracing over a template with CFs aligned as shown. Slide the tracing along the CF to locate the neckline on the template that has the nearest width to your's, but not narrower. That's the one to use with your block, so trace it back onto the front pattern you'll be using with the collar the template goes with, truing it with the existing back neckline and center-front overlap.

To size the under collar and collar+facing to your final neckline, first measure the length of the front neckline from the collar tip, then add half the length of your back neckline to locate the CBs of the collar and facing. The facing dimensions given at left are suggested minimums for all sizes.



In the graded full patterns below, the under-collar shapes are only scaled in length, but fully scaled versions are also provided and probably make sense, at the extremes at least, especially for #2, as its collar neckline curves match less and less as the neckline grades up and down. It's OK if they don't match perfectly, but the collar angle will be affected increasingly by mismatches, so feel free to adjust the lines as you see fit. The gray-filled shapes are my original drafts, as shown in the muslin photos.



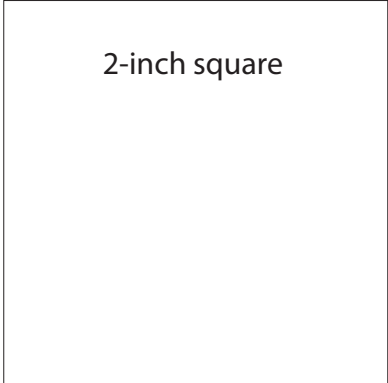


2

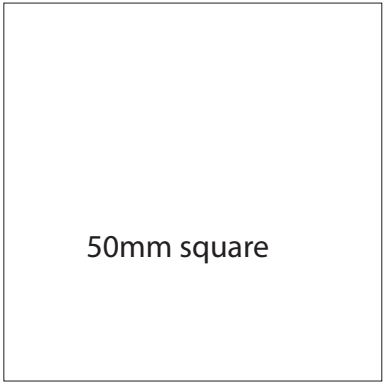


From pages 100-101

ADD SEAM ALLOWANCES ALL AROUND



2-inch square



50mm square

From THE SHIRTMAKING WORKBOOK
Pages 100-101

2

2

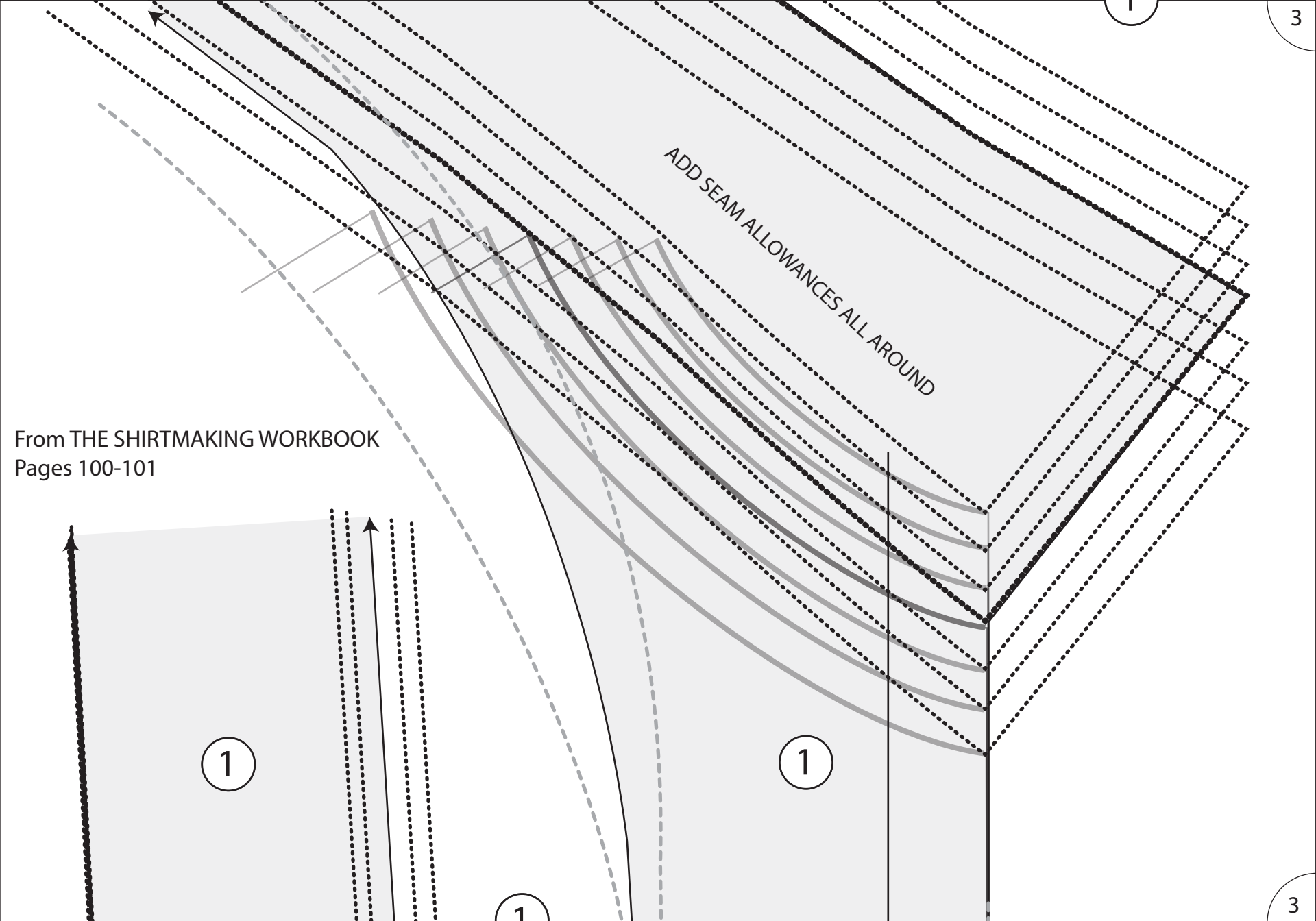
ADD SEAM ALLOWANCES ALL AROUND

From THE SHIRTMaking WORKBOOK
Pages 100-101

1

1

1

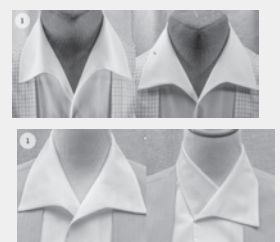


From THE SHIRTMaking WORKBOOK
Pages 100-101

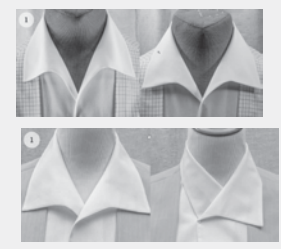
ADD SEAM ALLOWANCES ALL AROUND



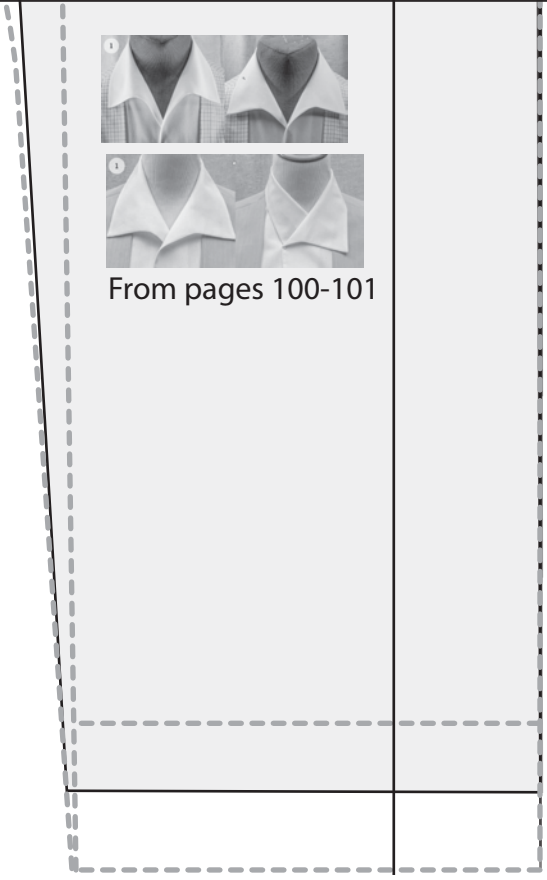
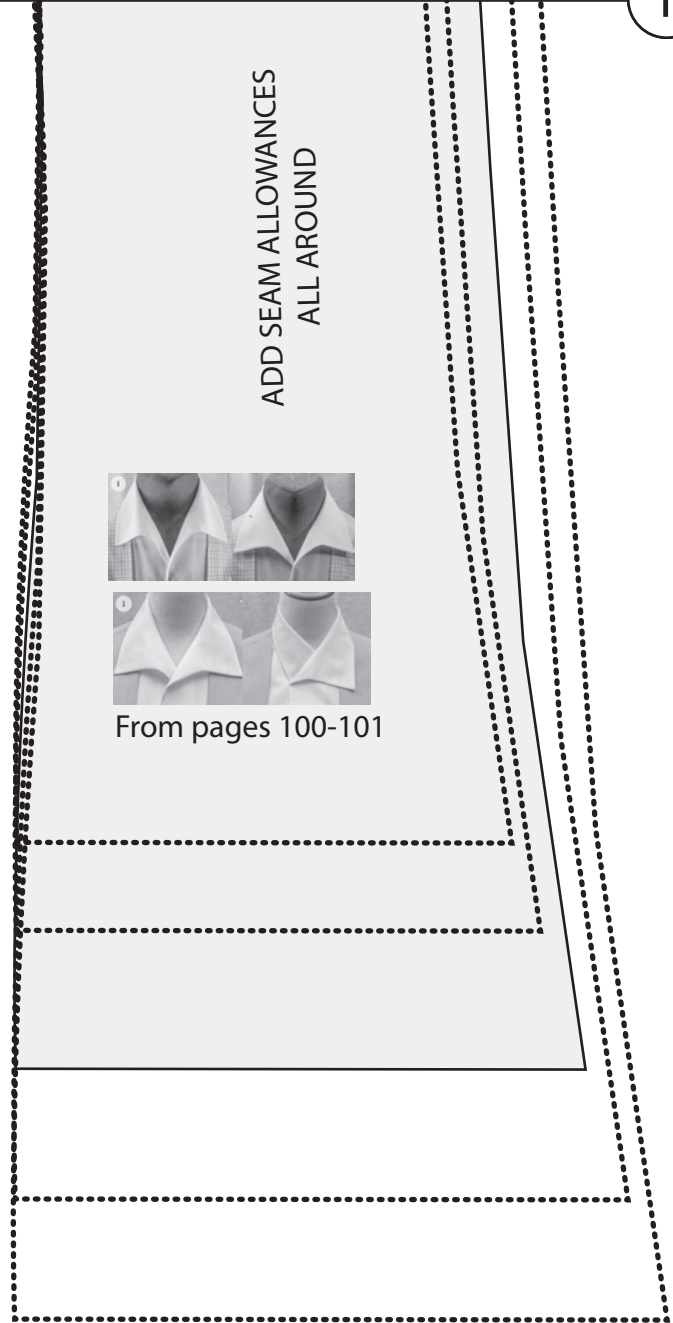
ADD SEAM ALLOWANCES
ALL AROUND



From pages 100-101



From pages 100-101



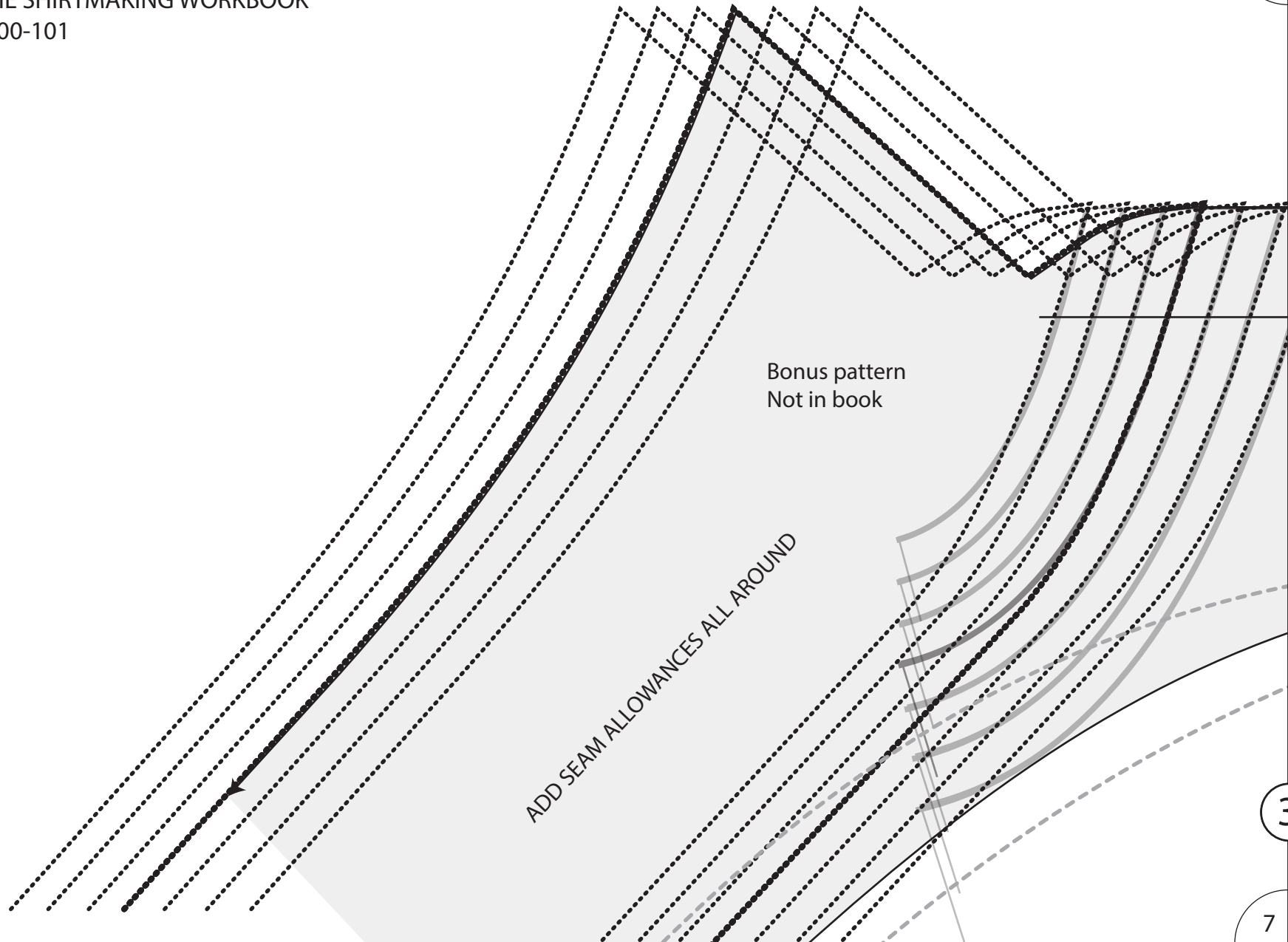
From THE SHIRTMaking WORKBOOK
Pages 100-101

2



From pages 100-101

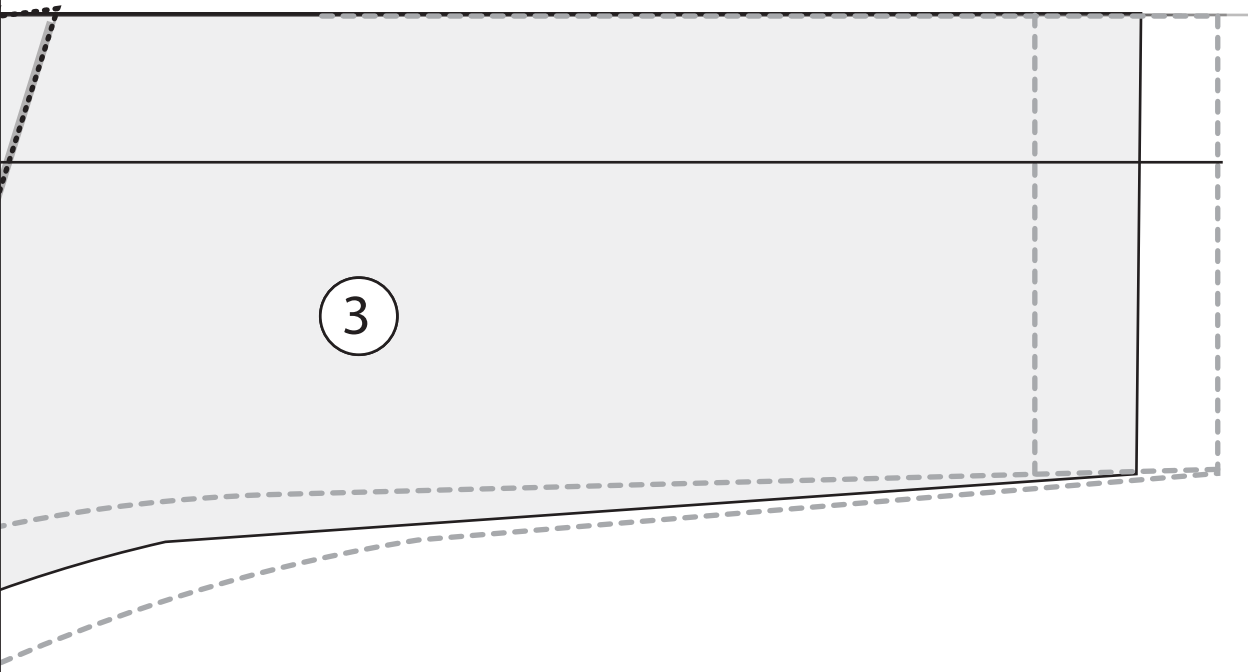
From page 72



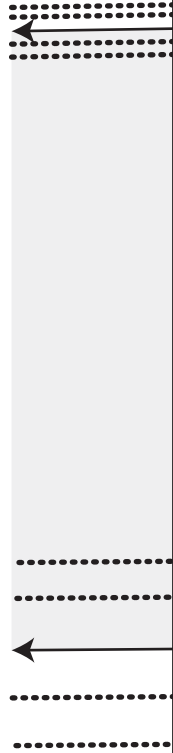
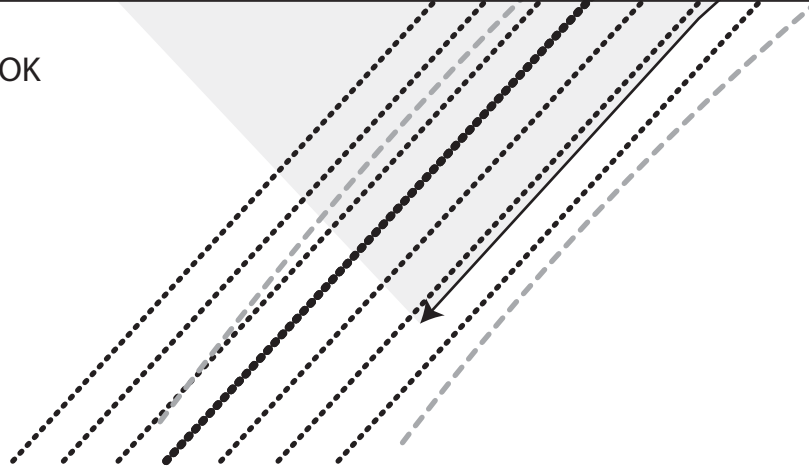
Bonus pattern
Not in book

ADD SEAM ALLOWANCES ALL AROUND

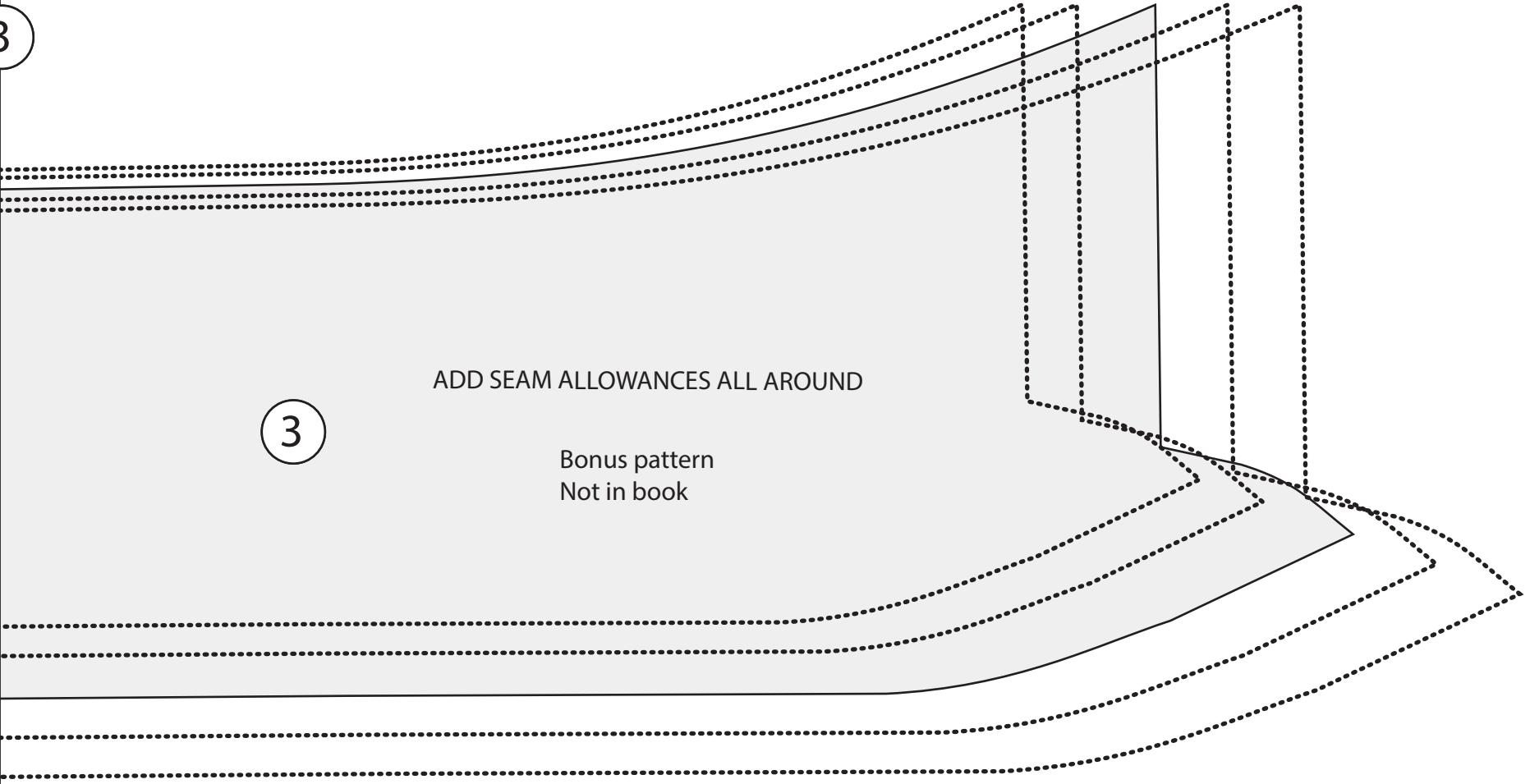
From THE SHIRTMAKING WORKBOOK
Pages 100-101



From THE SHIRTMAKING WORKBOOK
Pages 100-101



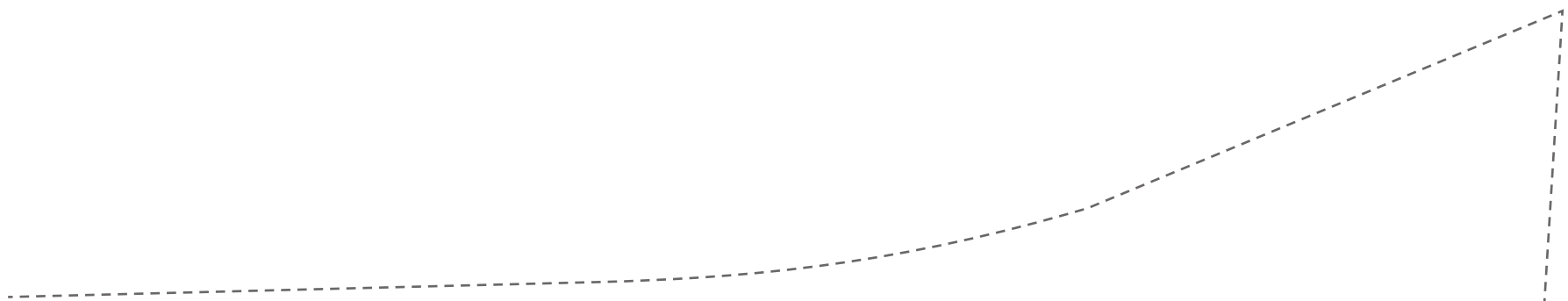
3



ADD SEAM ALLOWANCES ALL AROUND

3

Bonus pattern
Not in book



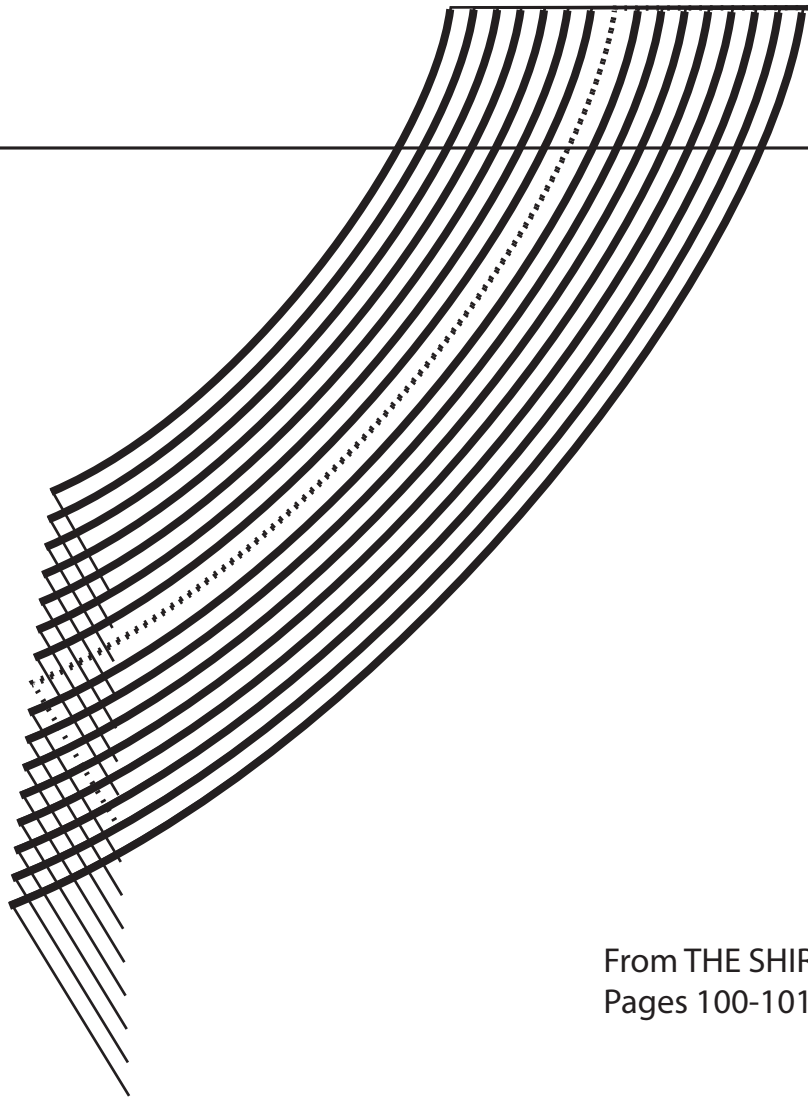
ADD SEAM ALLOWANCES ALL AROUND

DRAW YOUR OWN #2 COLLAR SHAPES

From THE SHIRTMaking WORKBOOK
Pages 100-101

2





1

NECKLINE TEMPLATE FOR PATTERN

Use as shown in the illustration on sheet one. More scaled steps have been added, but the use is the same. Choose the collar

From THE SHIRTMaking WORKBOOK
Pages 100-101

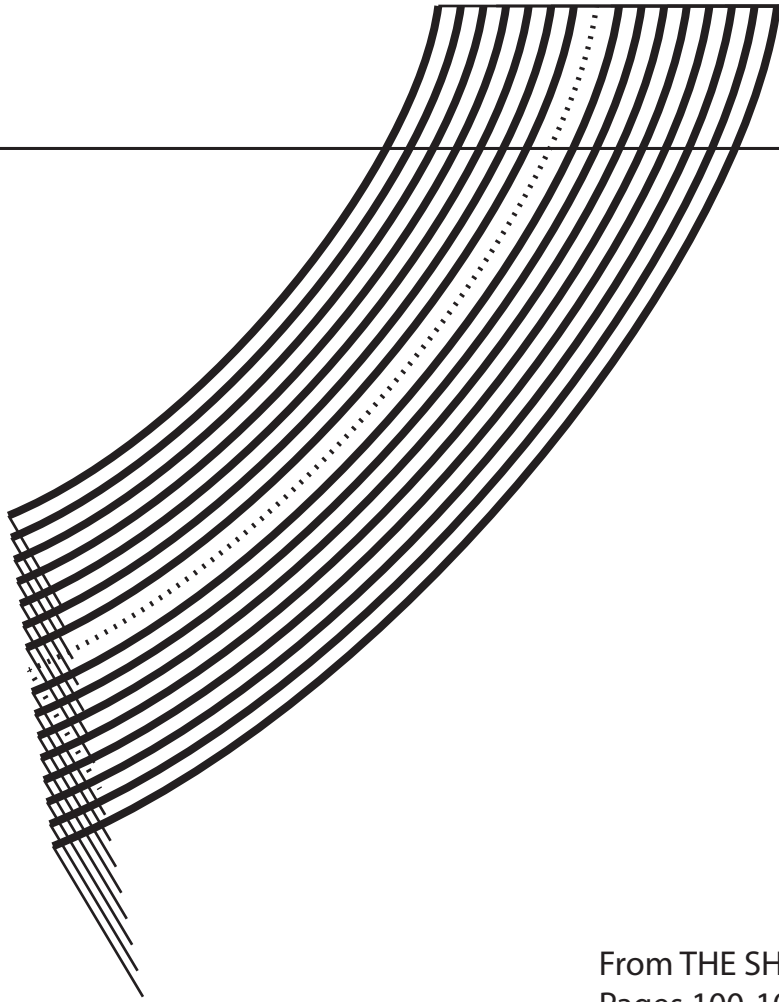


ADD SEAM ALLOWANCES ALL AROUND

From THE SHIRTMaking WORKBOOK
Pages 100-101

DRAW YOUR OWN #3 COLLAR SHAPES

3



2

NECKLINE TEMPLATE FOR PATTERN

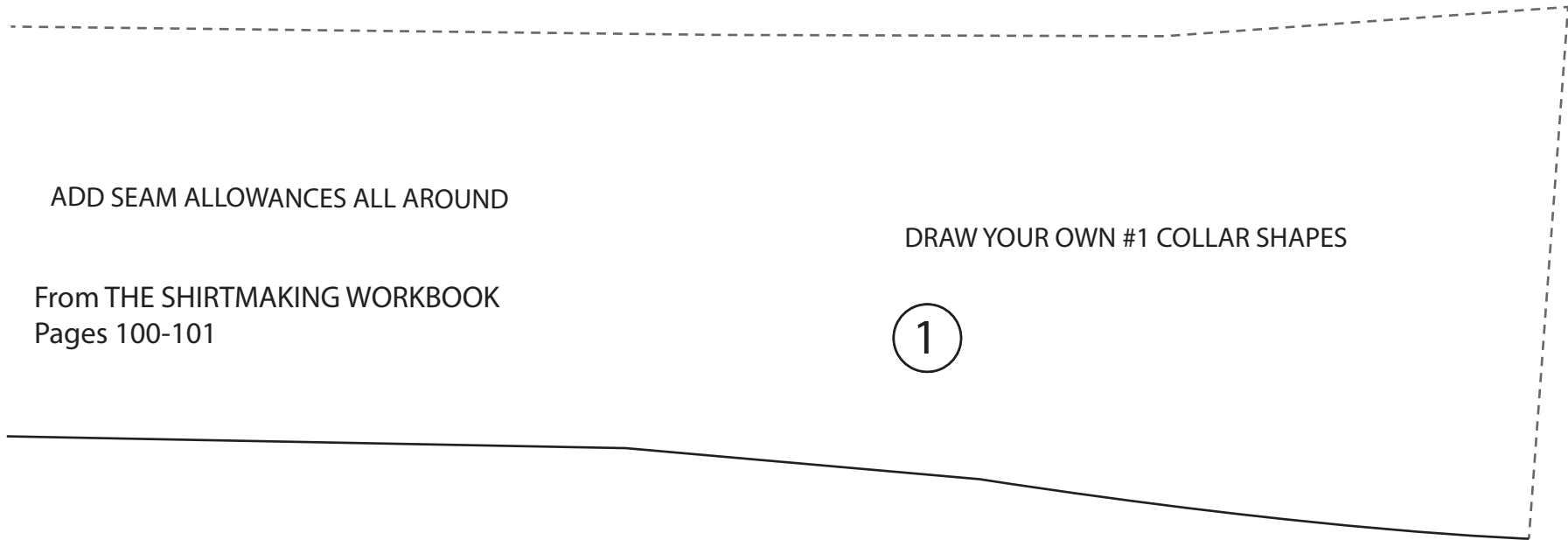
From THE SHIRTMAKING WORKBOOK
Pages 100-101

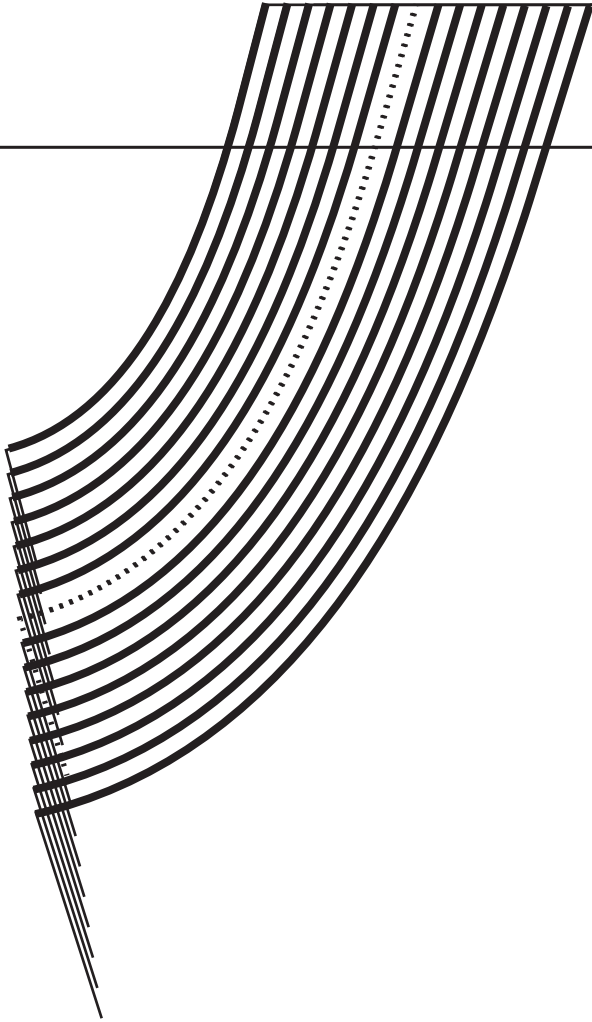
ADD SEAM ALLOWANCES ALL AROUND

From THE SHIRTMaking WORKBOOK
Pages 100-101

DRAW YOUR OWN #1 COLLAR SHAPES

1





3

NECKLINE TEMPLATE FOR PATTERN

From THE SHIRTMaking WORKBOOK
Pages 100-101