

from THE SHIRTMAKING WORKBOOK, pages 150-153

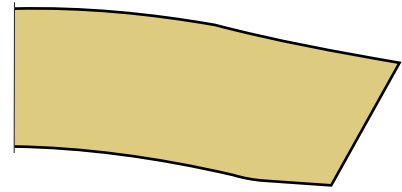




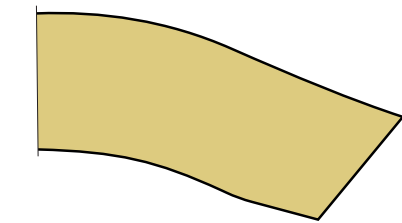
Center Front
FACING

Center Front
FACING

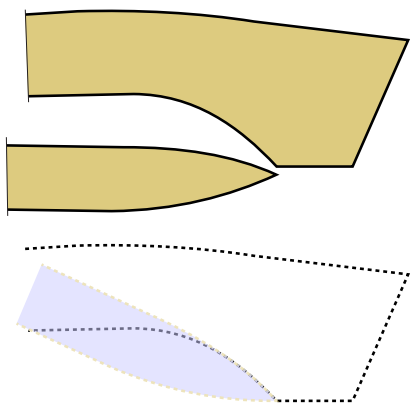
FACING EDGE
FLIPPED OVER



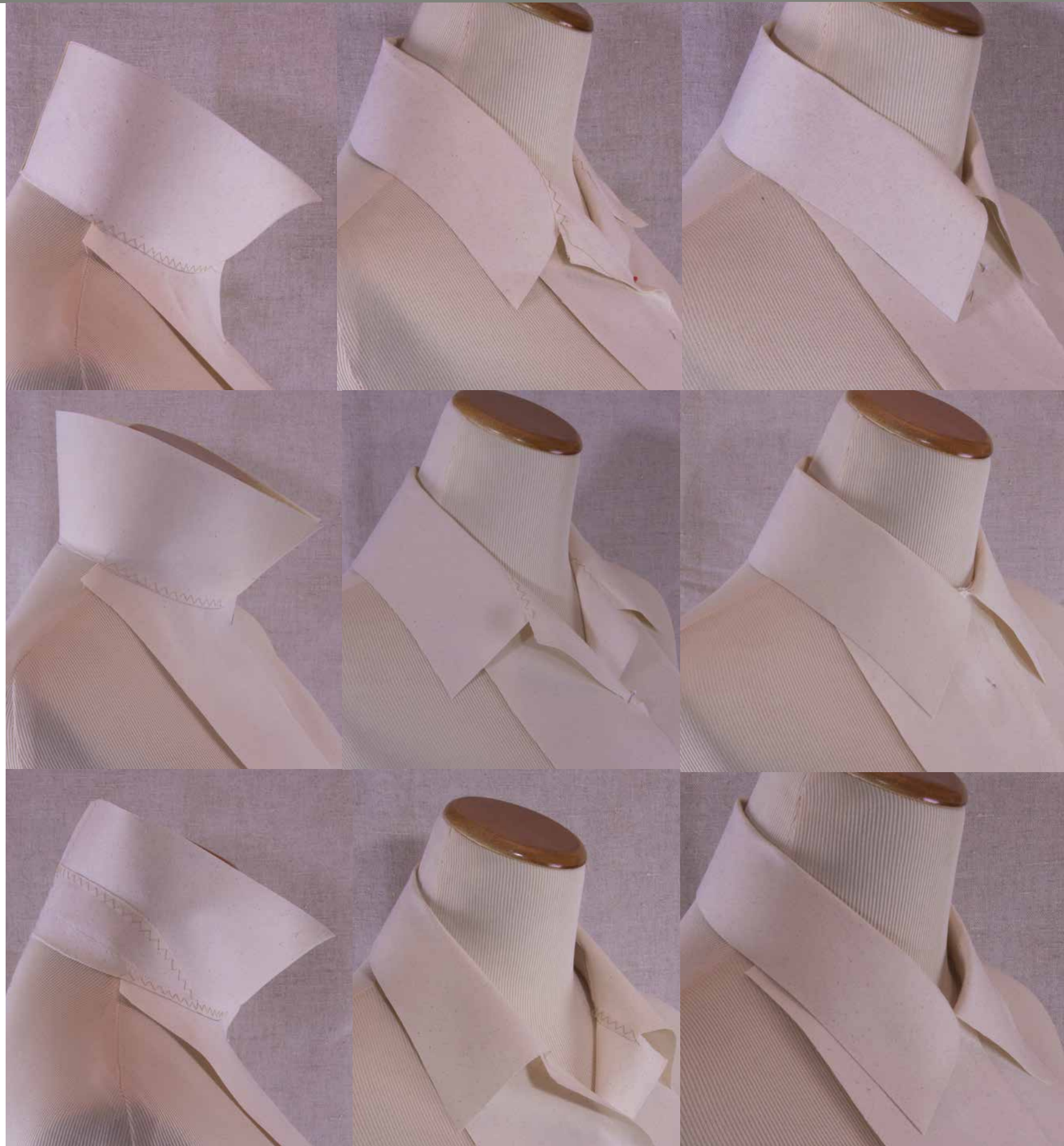
Straight



Curved



Partial Stand

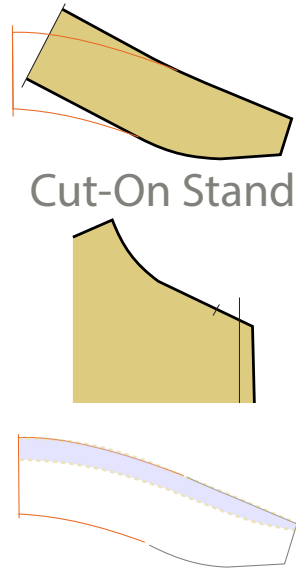


[CLICK FOR PATTERNS](#)

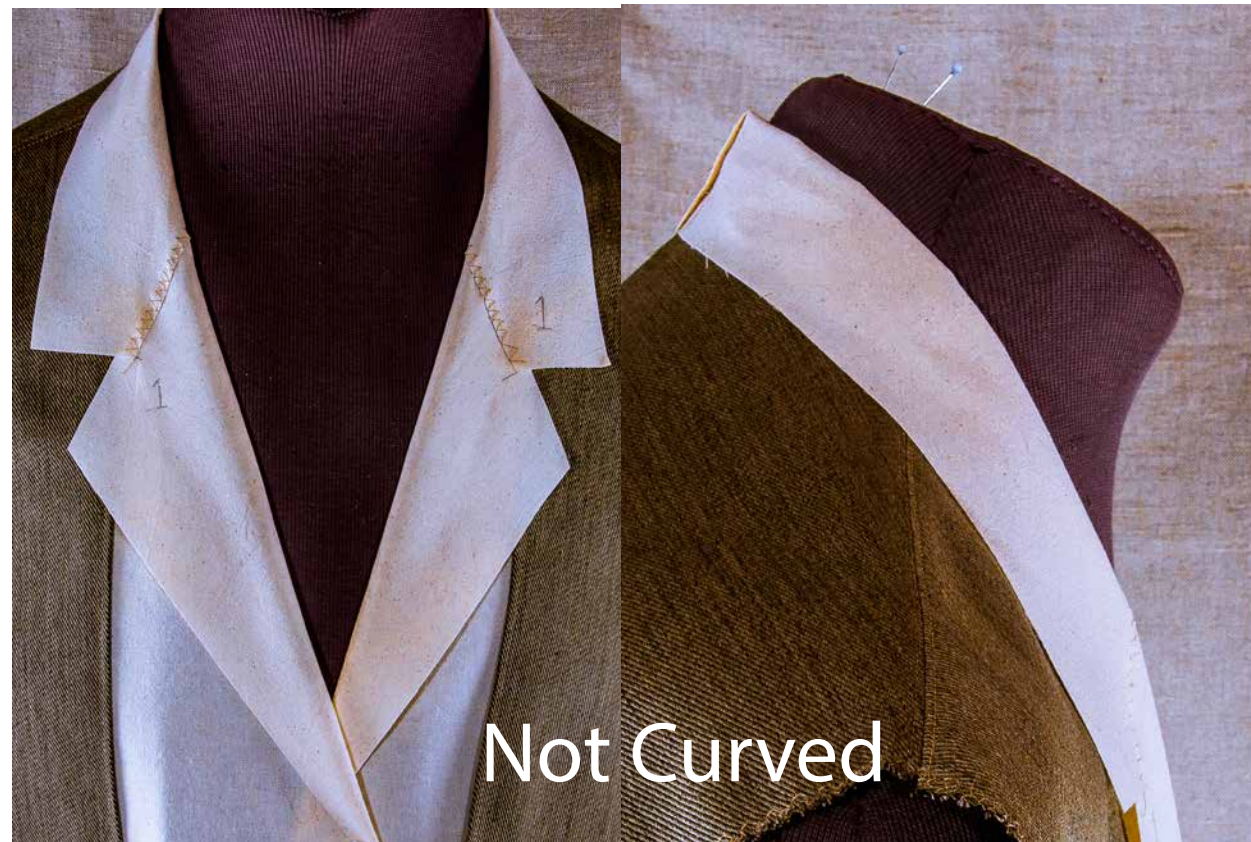
from THE SHIRTMAKING WORKBOOK, page154



CLICK FOR PATTERNS



Cut-On Stand



Not Curved



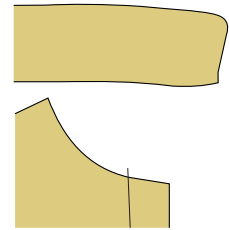
Curved



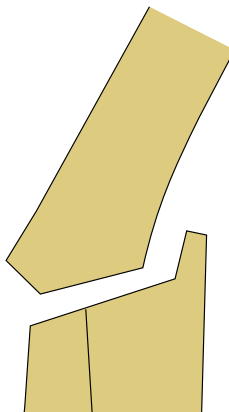
FEATURED PATTERNS:

CONVERTIBLE JACKET COLLARS

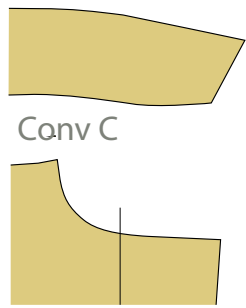
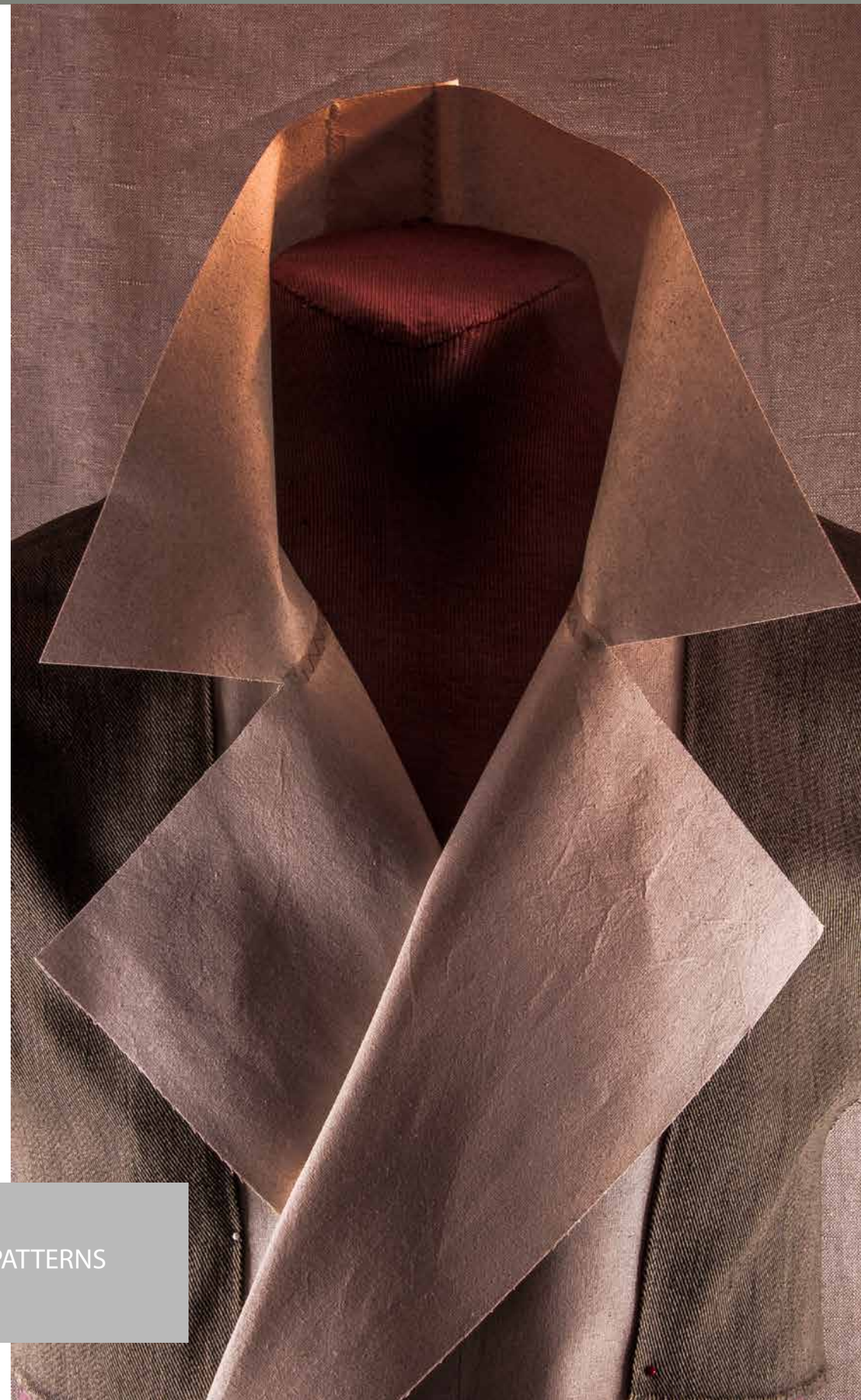
Conv A



Conv B



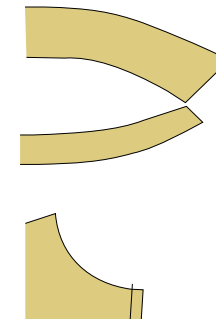
CLICK FOR PATTERNS



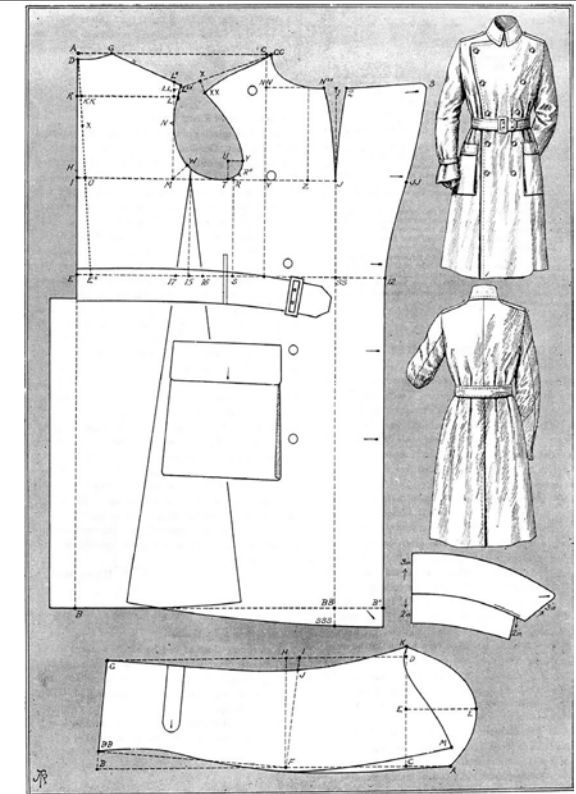
Conv C



[CLICK FOR PATTERNS](#)



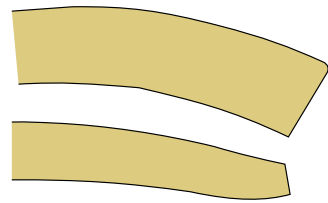
Tr 1



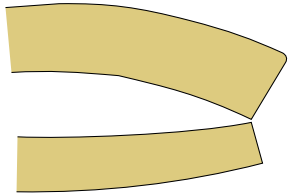
THE NEW "TRENCH" COAT.



[CLICK FOR PATTERNS](#)

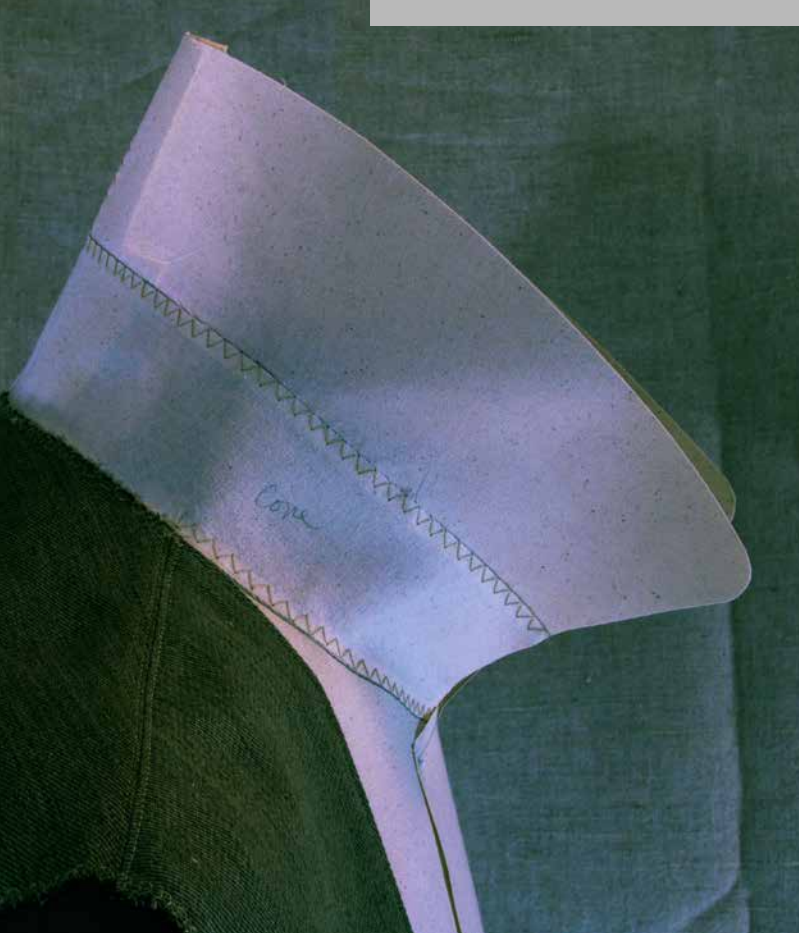


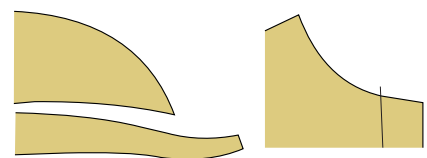
Tr 2



Tr 3

[CLICK FOR PATTERNS](#)





Deb 1

[CLICK FOR PATTERNS](#)

FEATURED GARMENT:

FILSON DOUBLE MACKINAW CRUISER

from THE SHIRTMAKING WORKBOOK, pages 160- 161

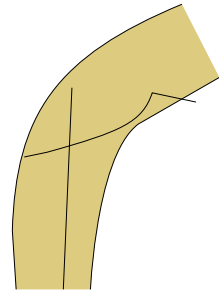
[Go to the Filson site](#)



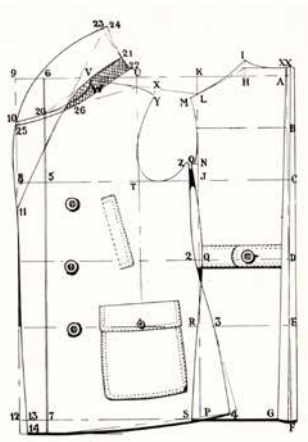
from THE SHIRTMAKING WORKBOOK, pages 160-161

[Go to the Filson site](#)





Sim 1



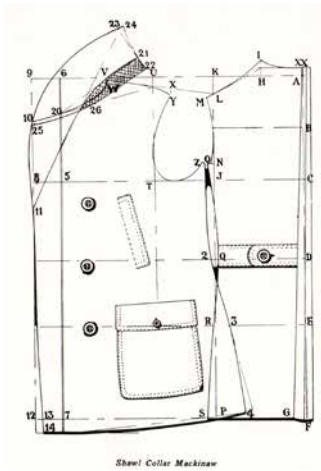
Shawl Collar Mackinaw

from THE SHIRTMAKING WORKBOOK, pages 162-163

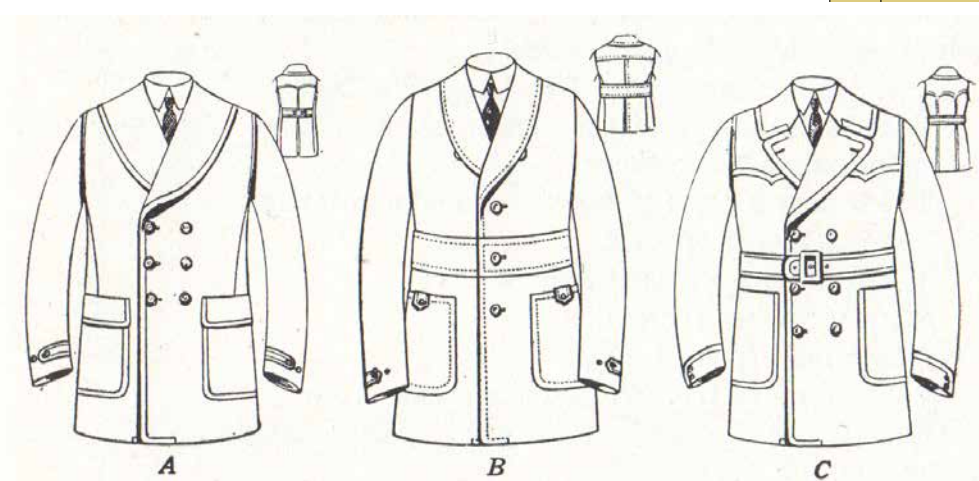
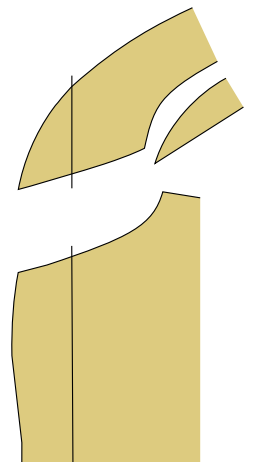
[CLICK FOR PATTERNS](#)

FEATURED PATTERNS:

CONVERTIBLE JACKET COLLARS



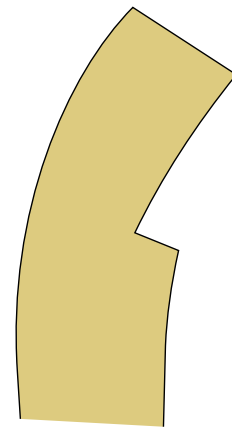
Sim 2



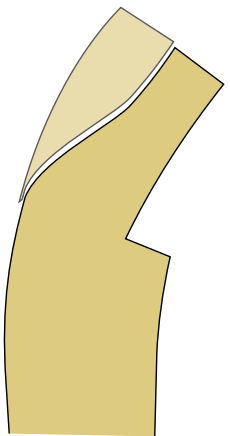
A—Double-Breasted Shawl Collar Mackinaw
B—Single-Breasted Shawl Collar Mackinaw
C—Double-Breasted Convertible Collar Mackinaw

from THE SHIRTMAKING WORKBOOK, pages 162-163

[CLICK FOR PATTERNS](#)



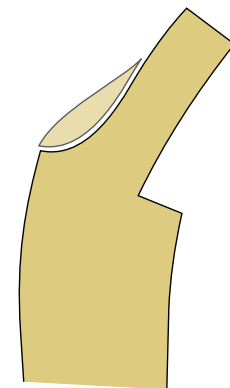
Sh 1



Sh 2



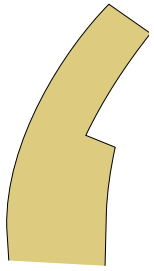
Sh 3



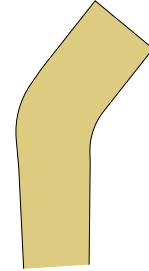
[CLICK FOR PATTERNS](#)

FEATURED PATTERNS:

CONVERTIBLE JACKET COLLARS



Sh 4



Sh 5



[CLICK FOR PATTERNS](#)