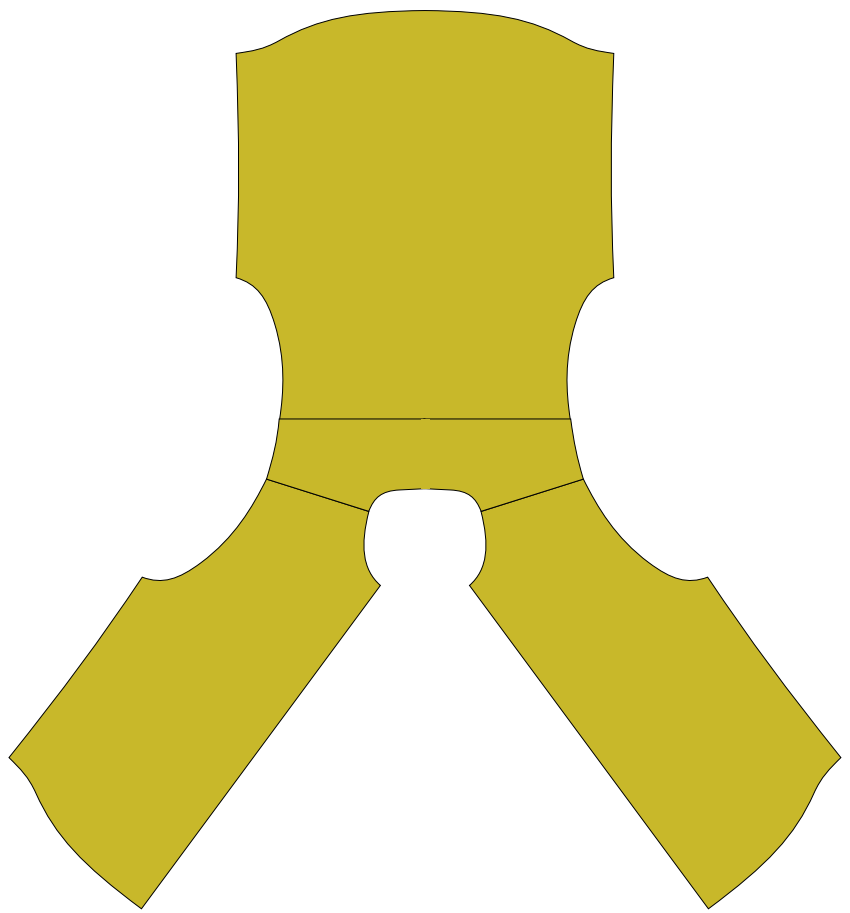


# Combination Collar Construction Steps



**Prep Shirt:**  
Join fronts and back at the yoke.

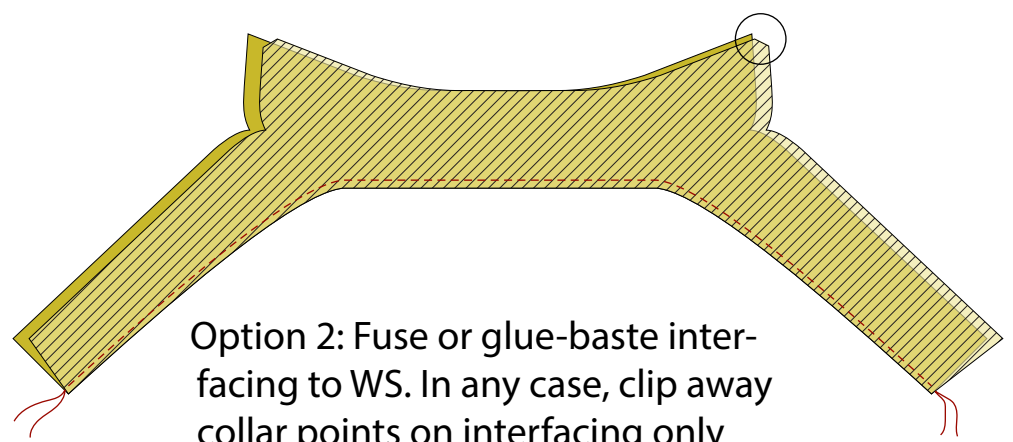


**Prep Collar:**  
Join under-collar at CB if bias-cut.

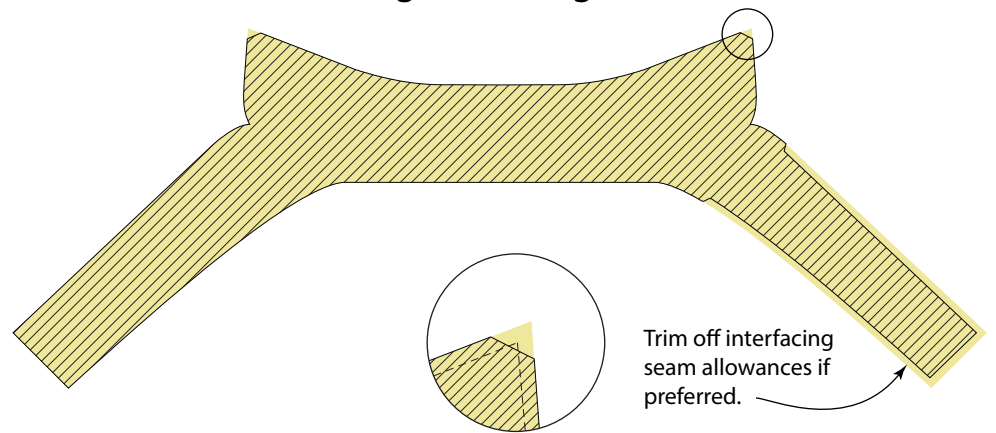


**Interface upper-collar/facing.**  
Option 1: Stitch as shown, right sides together (if fusible, glue side UP), turn to clean-finish seamed edge, then fuse if fusible.

Interface the facing extensions in the same way you choose for the collar/facing piece.

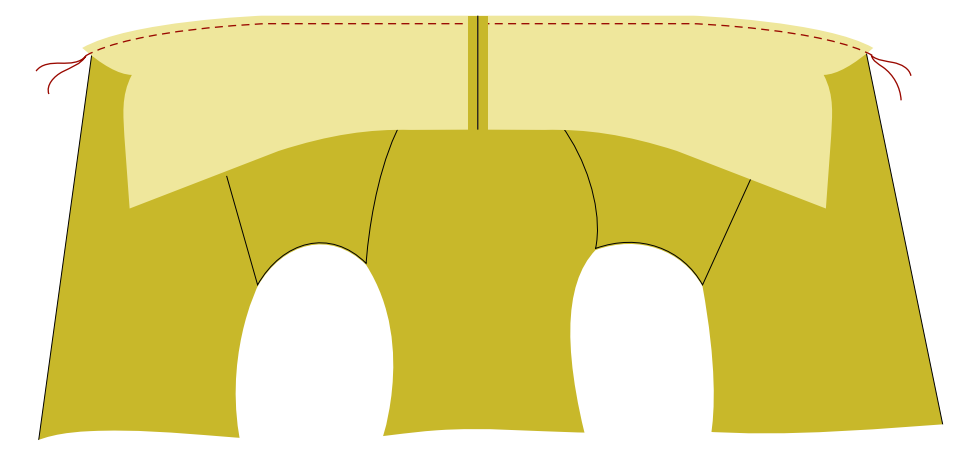


Option 2: Fuse or glue-baste interfacing to WS. In any case, clip away collar points on interfacing only before fusing or basting.

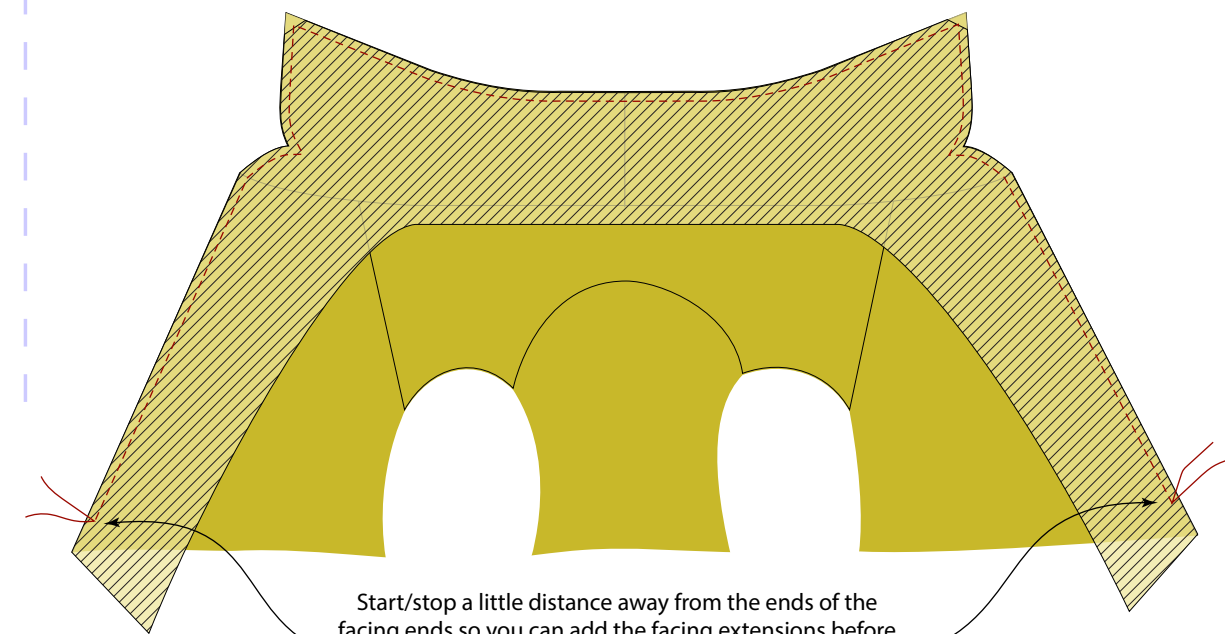


Trim off interfacing seam allowances if preferred.

**Add Collar:**  
Join under-collar to neckline, right sides together. Press seam allowances open.

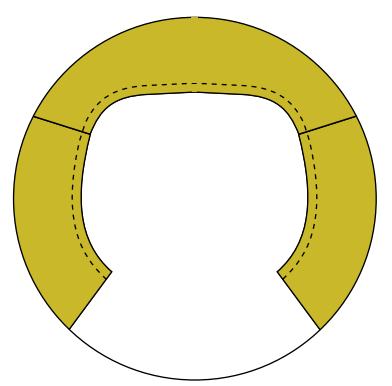


With right sides together, join upper-collar/facing to under-collar and fronts.



Start/stop a little distance away from the ends of the facing ends so you can add the facing extensions before continuing on down the front edges.

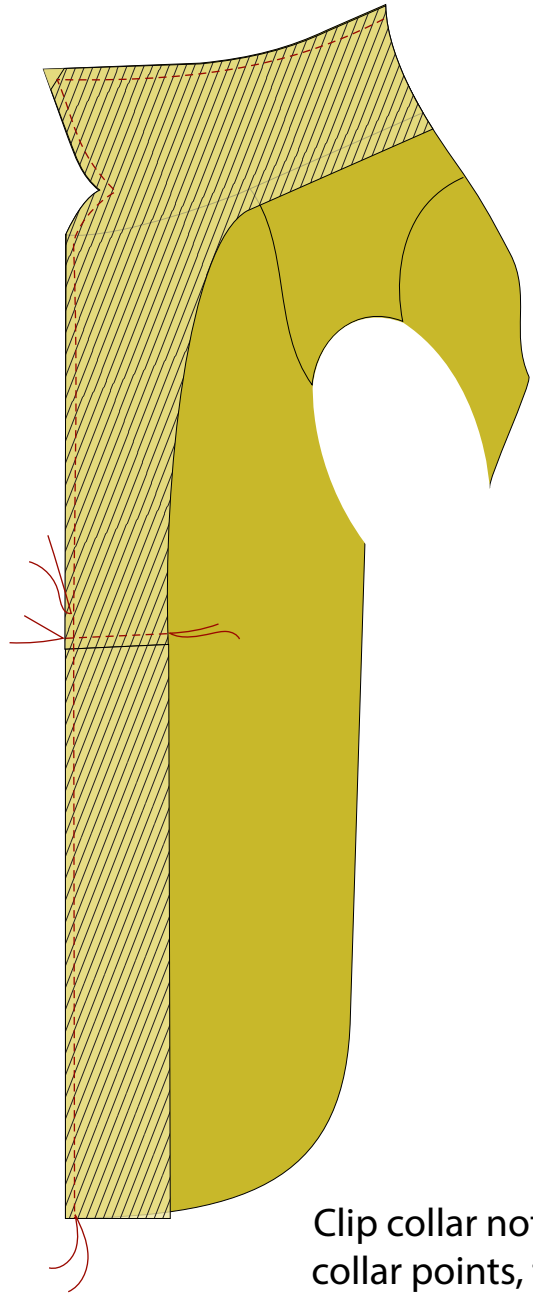
Stay-stitch neckline if desired.



## Combination Collar Construction Steps

### Complete Facing:

Join facing extensions to collar and fronts.



Clip collar notches, trim collar points, turn collar/facings, and press.

### Finish edges and topstitch:

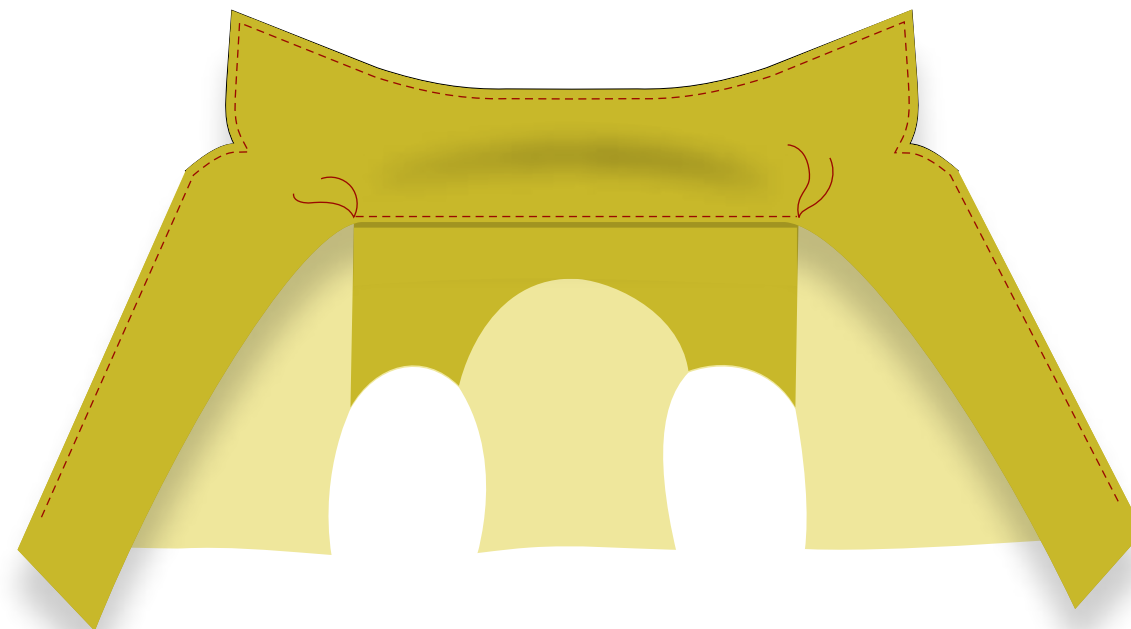
If you chose Option 2 when interfacing, the free collar/facing edges are still unfinished, so do that now. I'd use a rolled-hem foot, but a single edge-stitched turn-under would no doubt be OK, too.



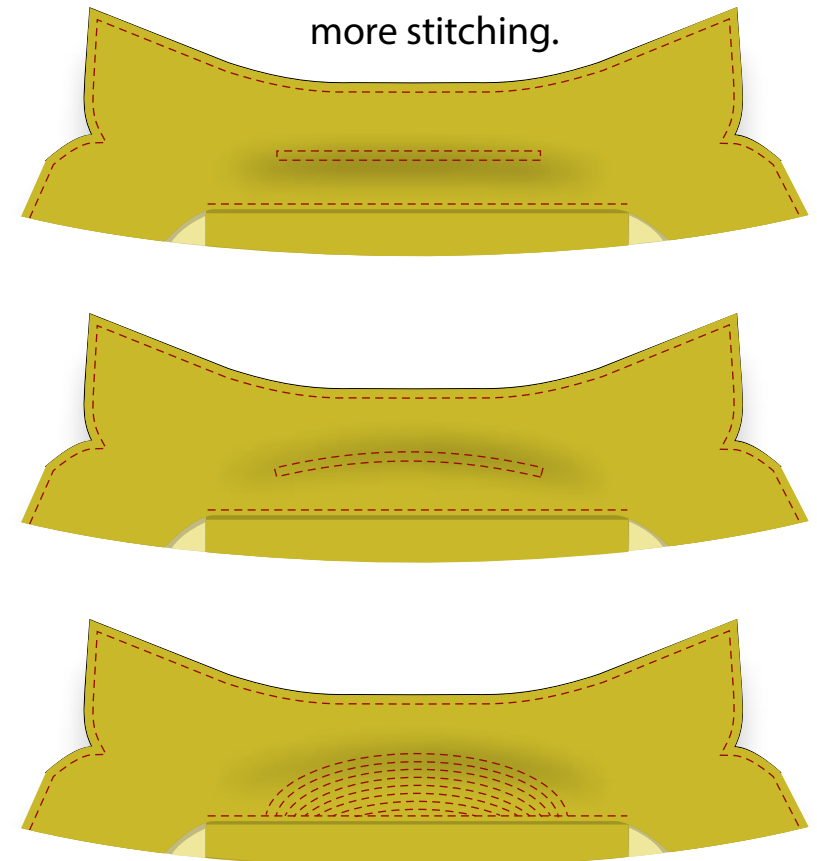
Top- or edge-stitch the collar and front edges as you prefer.



Before you close the inside back neckline as shown below, form the collar layers as you'll wear them on your neck or form, and pin to secure the turn of the cloth arrangement this creates, especially if your collar design has a "stand" portion more like a dress collar than a convertible collar.



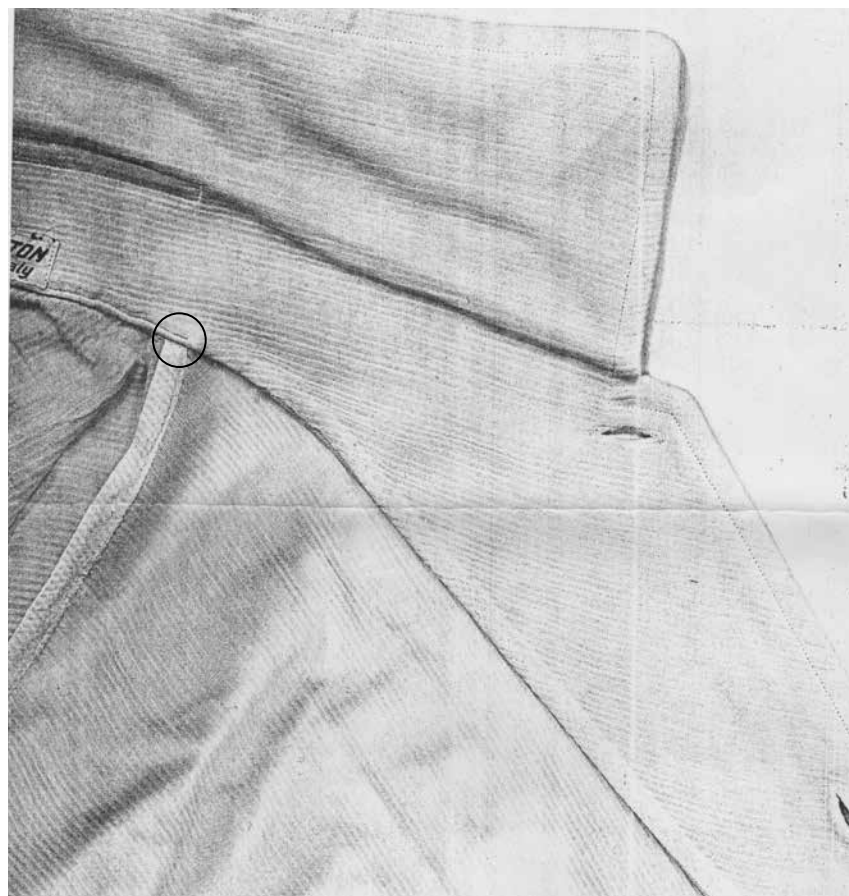
Consider reinforcing the stand & cloth-turn with more stitching.



Combination Collar Construction



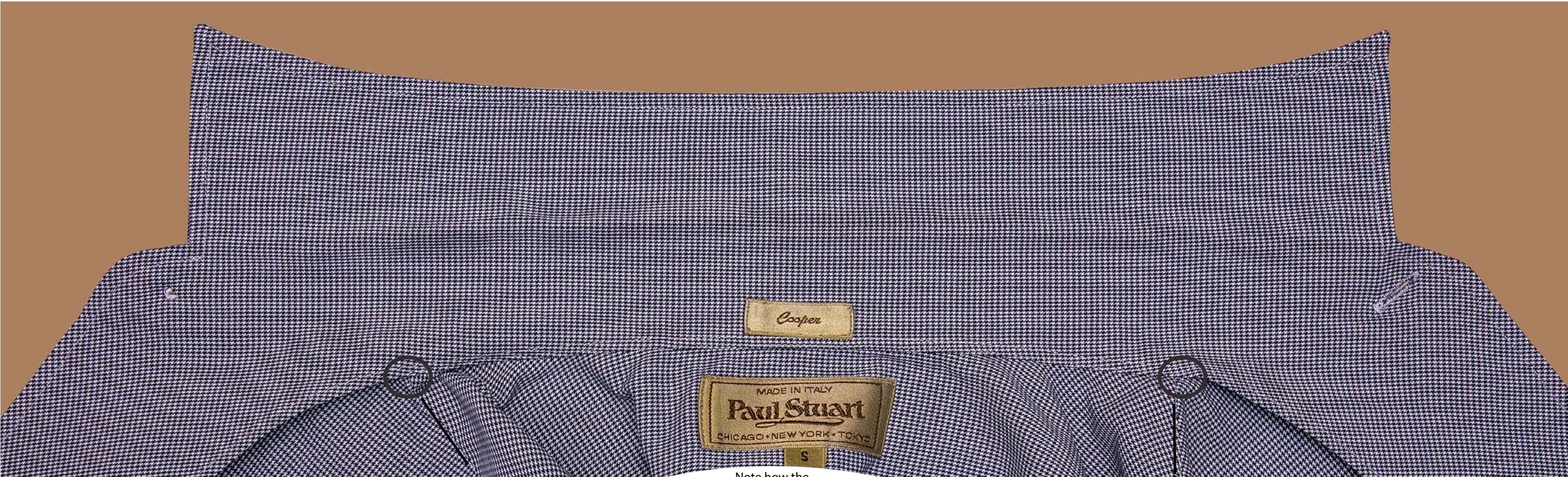
Vintage combo-collar details.



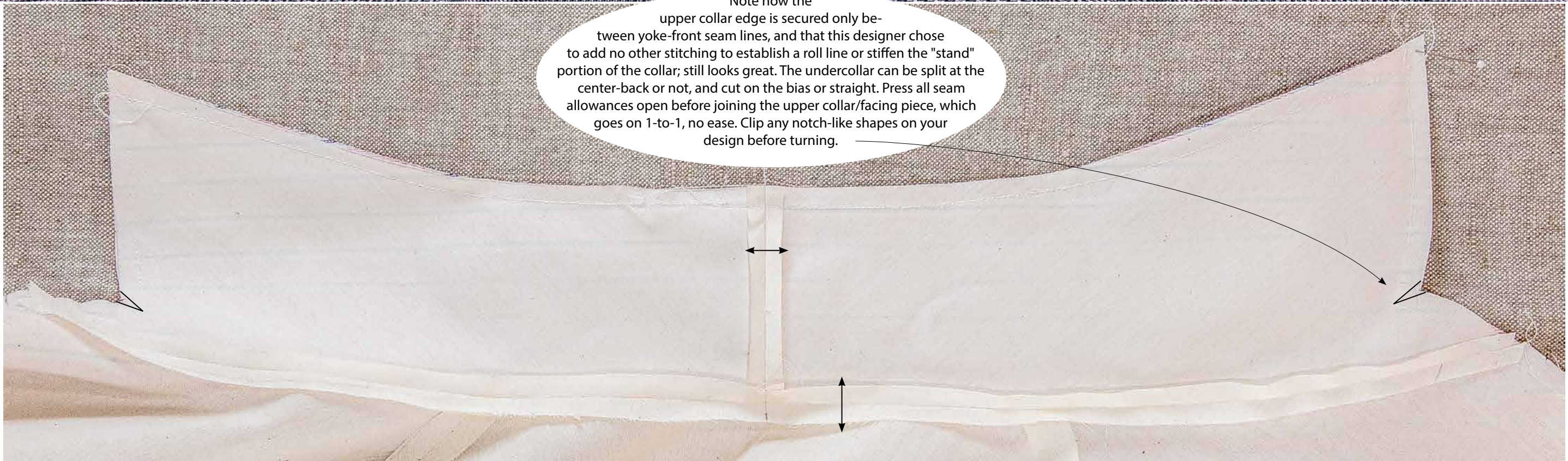


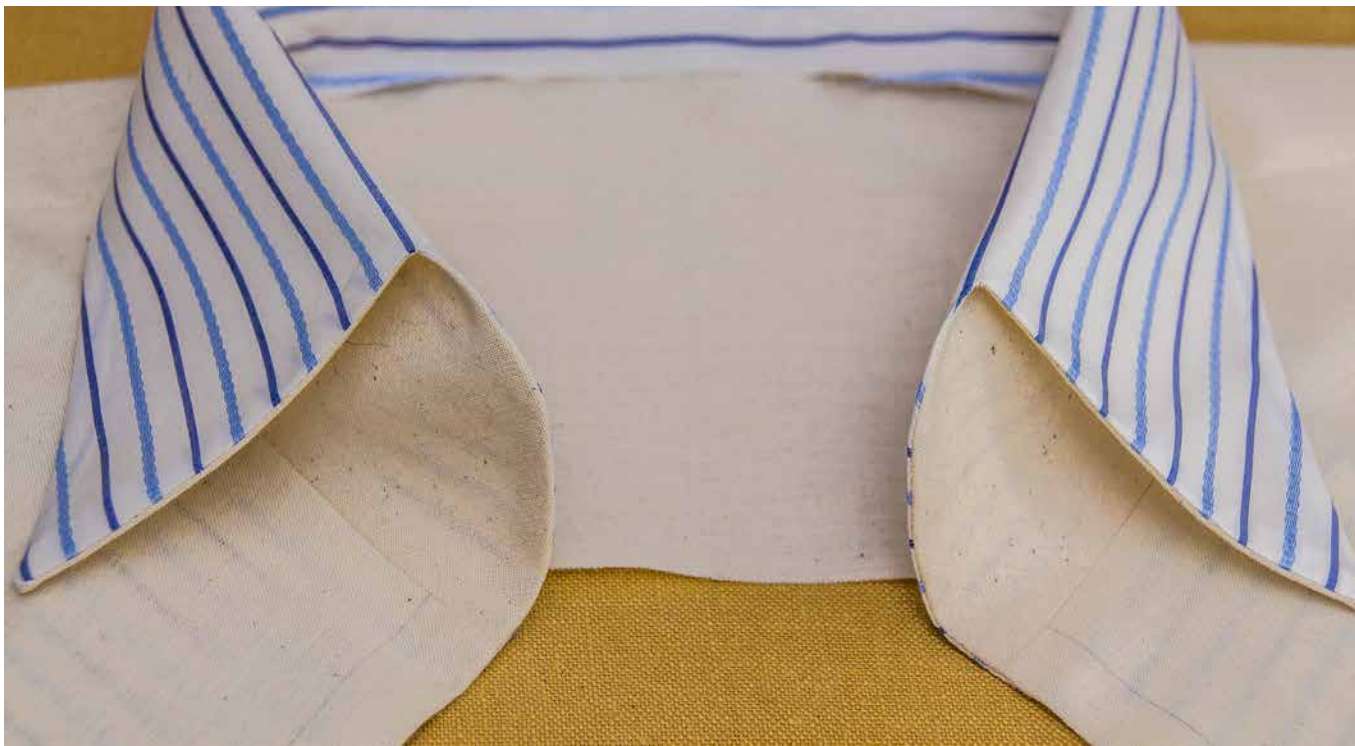
Note above the interfaced facing/collar and facing extension seam allowances pressed towards the extension and the free edges then rolled under and topstitched. And the buttonhole angle at lower right.





Note how the upper collar edge is secured only between yoke-front seam lines, and that this designer chose to add no other stitching to establish a roll line or stiffen the "stand" portion of the collar; still looks great. The undercollar can be split at the center-back or not, and cut on the bias or straight. Press all seam allowances open before joining the upper collar/facing piece, which goes on 1-to-1, no ease. Clip any notch-like shapes on your design before turning.



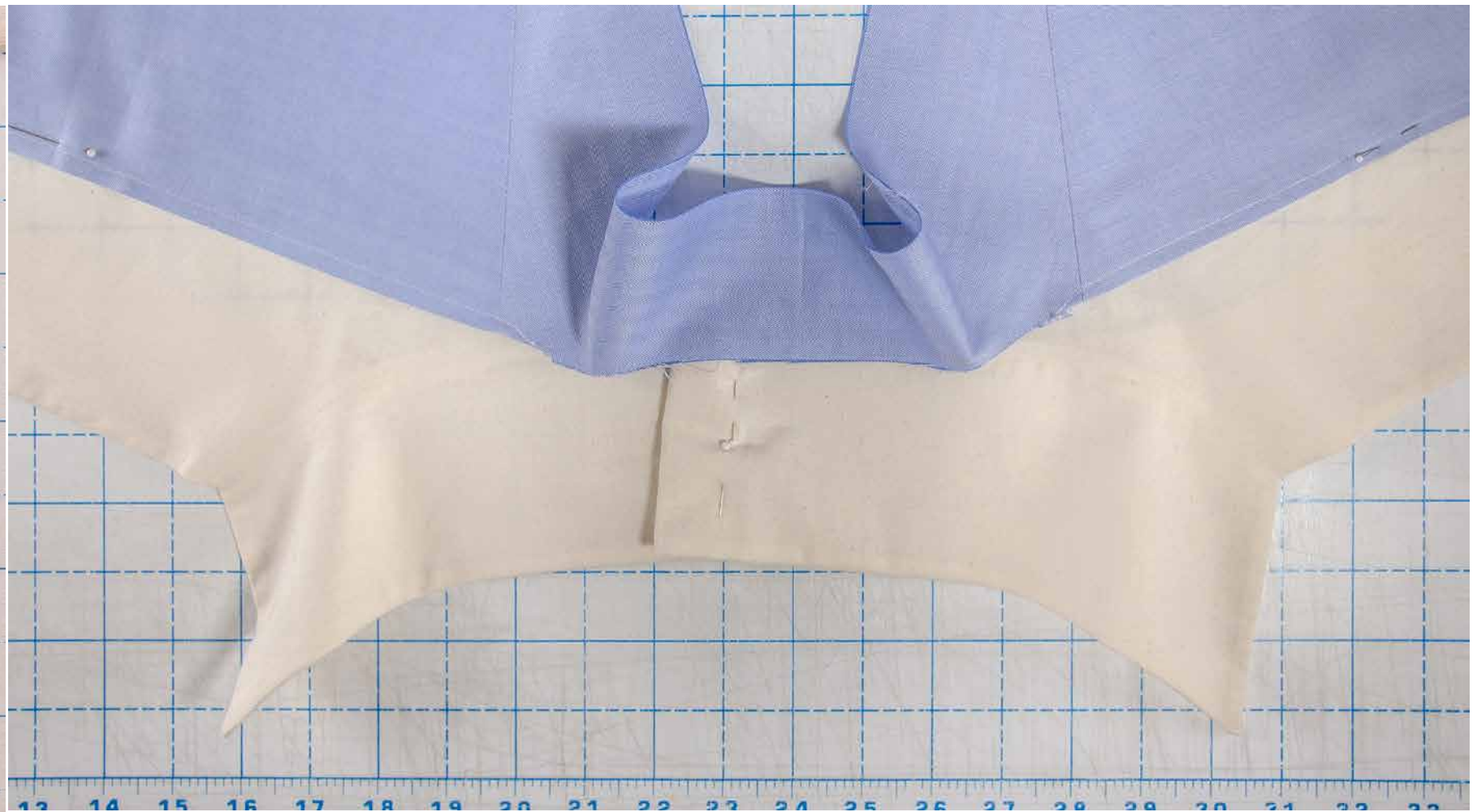


from THE SHIRTMAKING WORKBOOK  
see pages 106-107





More vintage combo collars.



Arrange your collar mock-up anyway you like for neckline depth and placement and center-front overlap, then pin it to your shoulder/armscye or shoulder/front sub-block to create the new front pattern. No need to alter the back or yoke.

