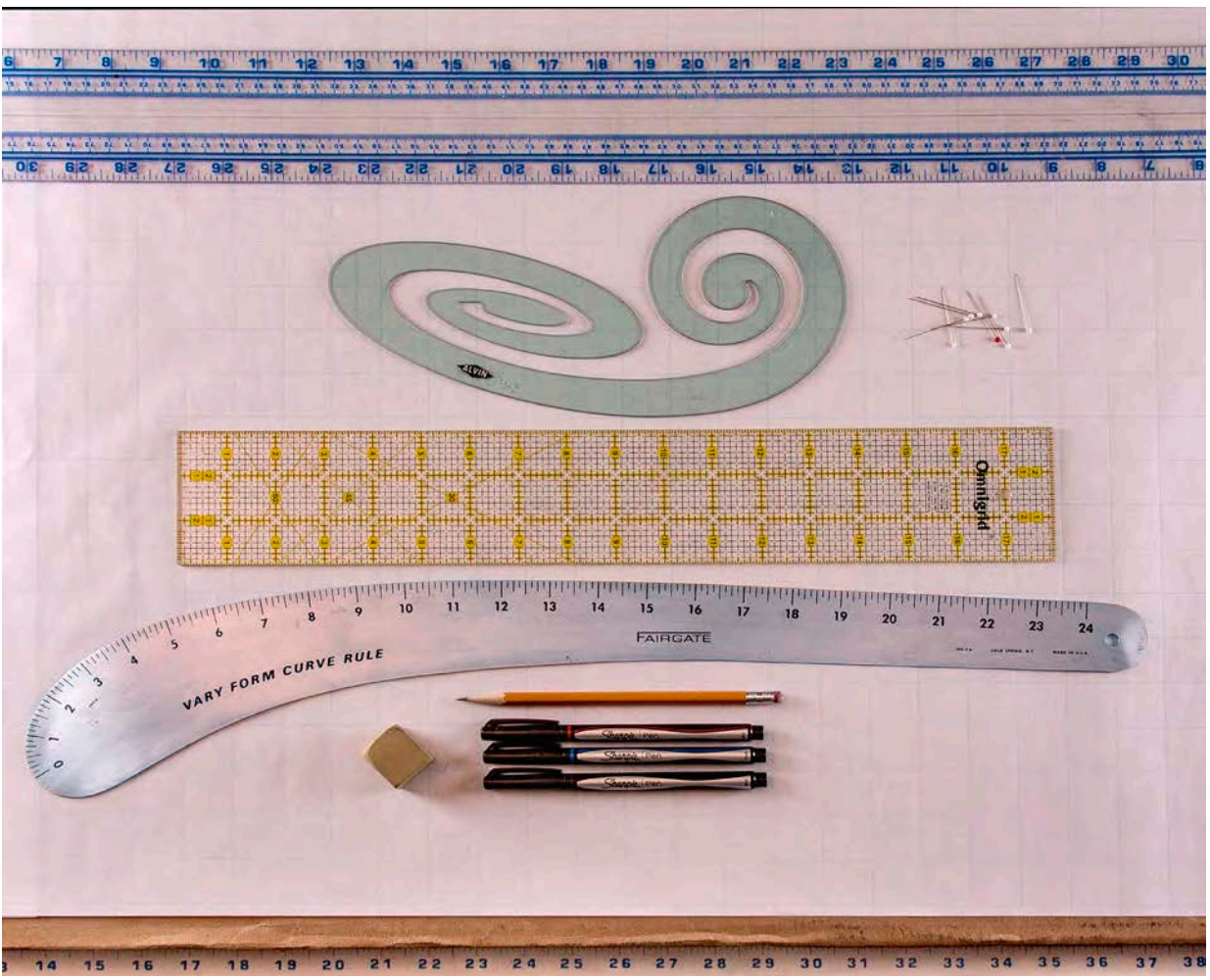
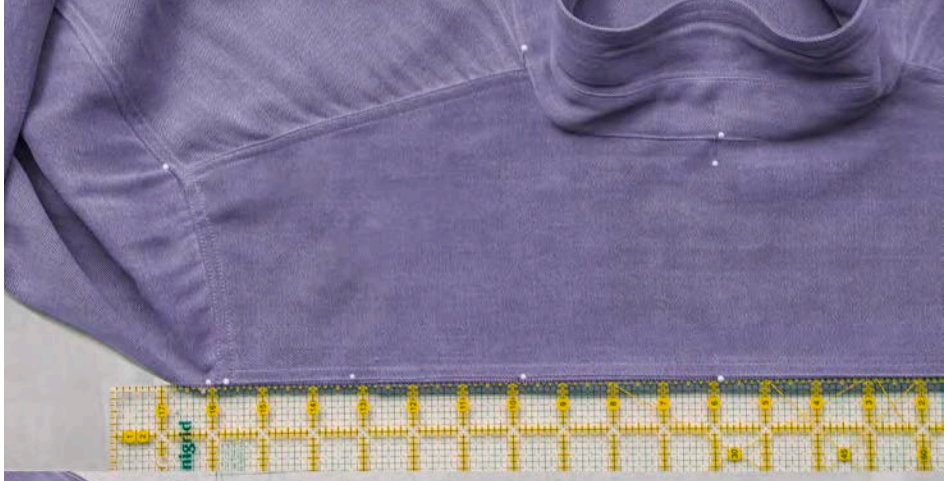


from THE SHIRTMAKING WORKBOOK, page 21



[CLICK FOR LINK TO SEMI-DRAPING ARTICLE](#)



from THE SHIRTMaking WORKBOOK, pages 22 and 23

[CLICK FOR CUSTOM DRESS-FORM LINKS](#)

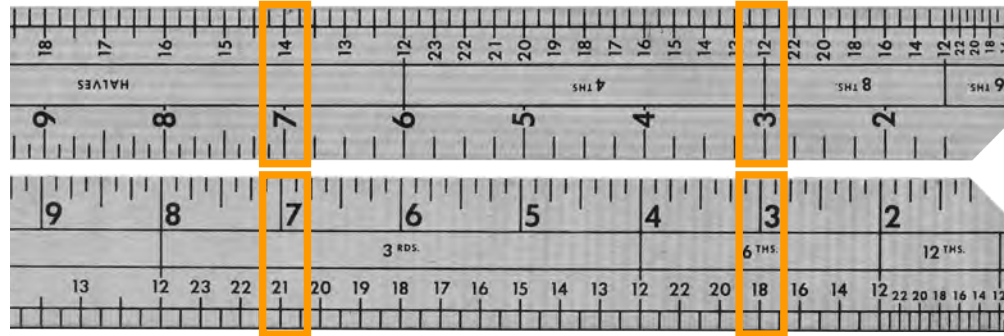
[CLICK TO OPEN SHIRT-COPYING VIDEO at YOUTUBE](#)

[CLICK TOOLS FOR LINKS](#)



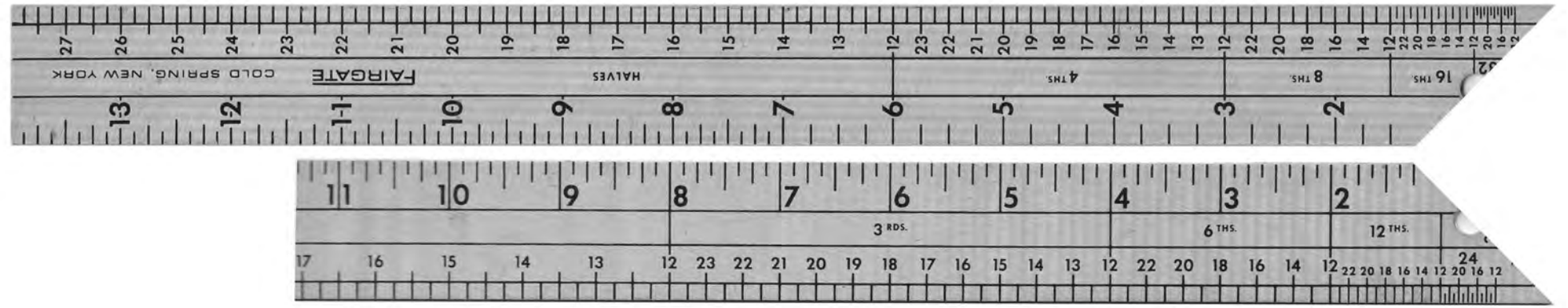
One-Half of 14

One-Fourth of 12



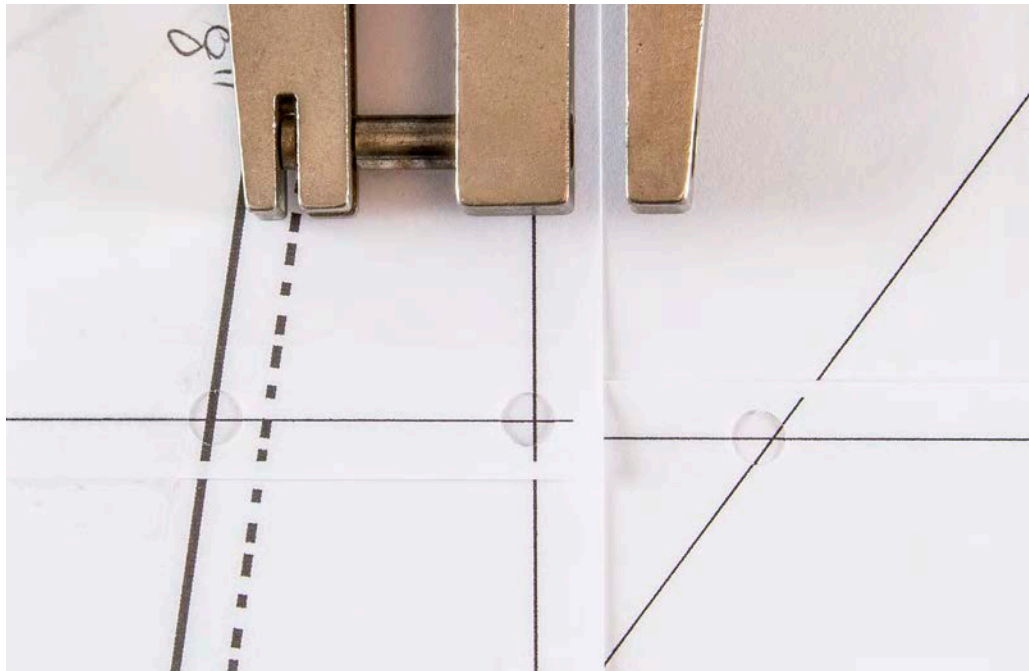
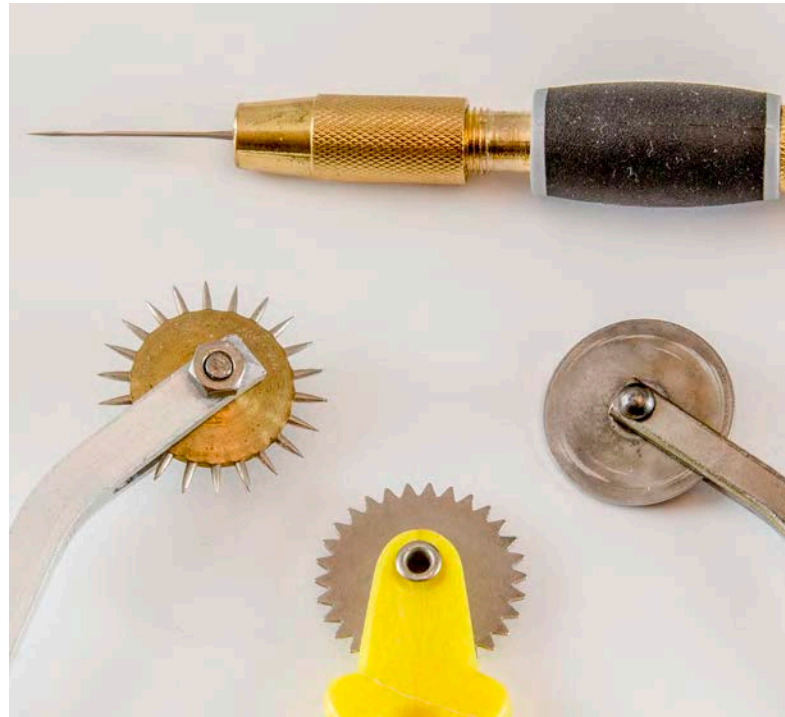
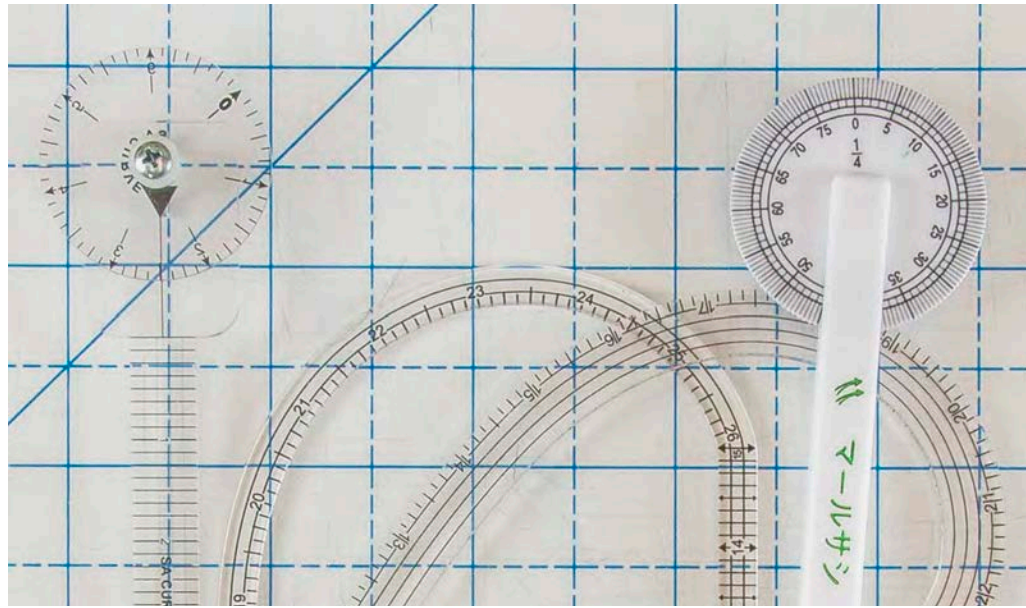
One-Third of 21

One-Sixth of 18

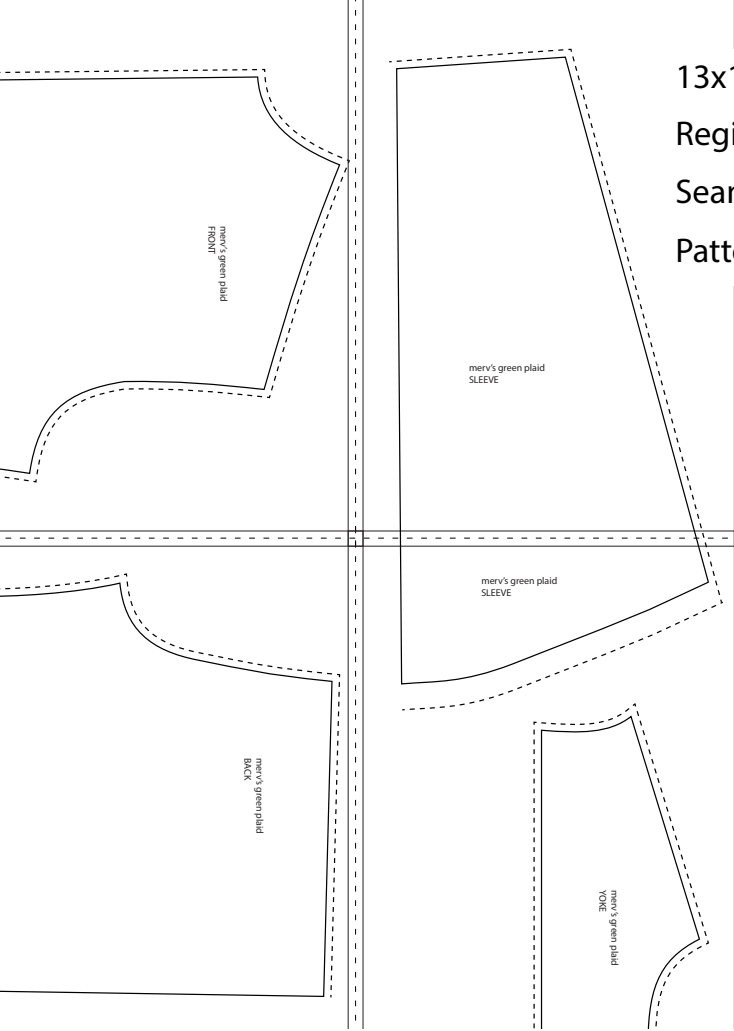


from THE SHIRTMAKING WORKBOOK, pages 25 and 29

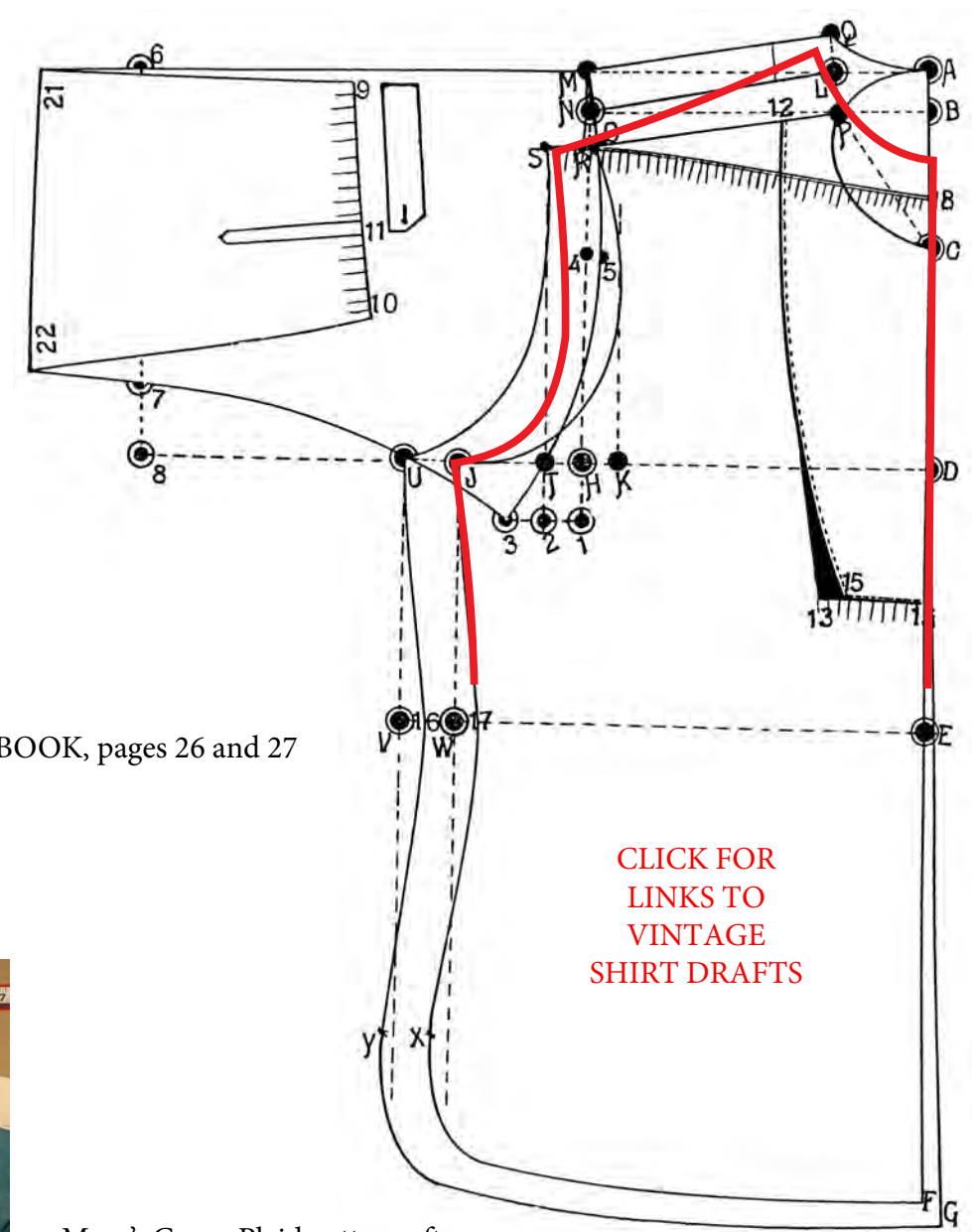
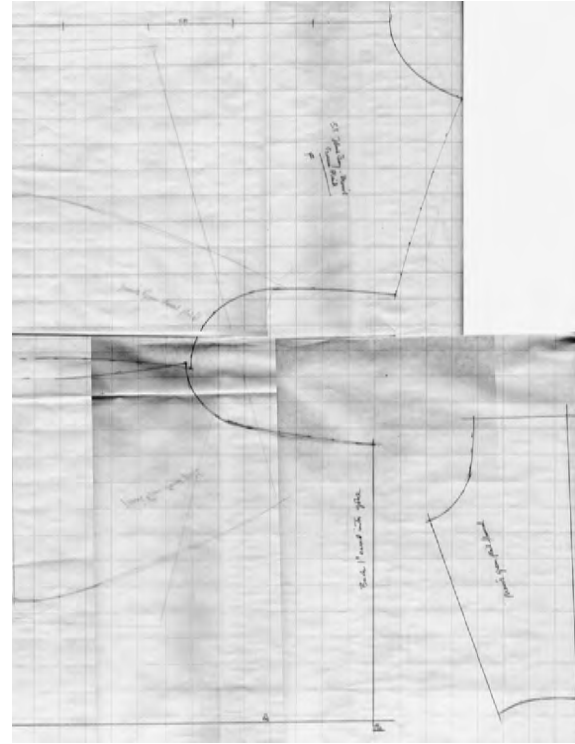
Click tool pix for links



Diane Ericson links

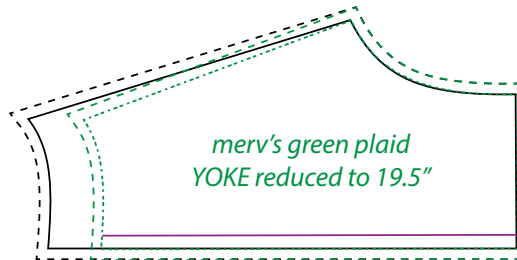


- 13x19" art board/paper _____
- Registration guides - - - - -
- Seam Allowances ······
- Pattern Shapes _____

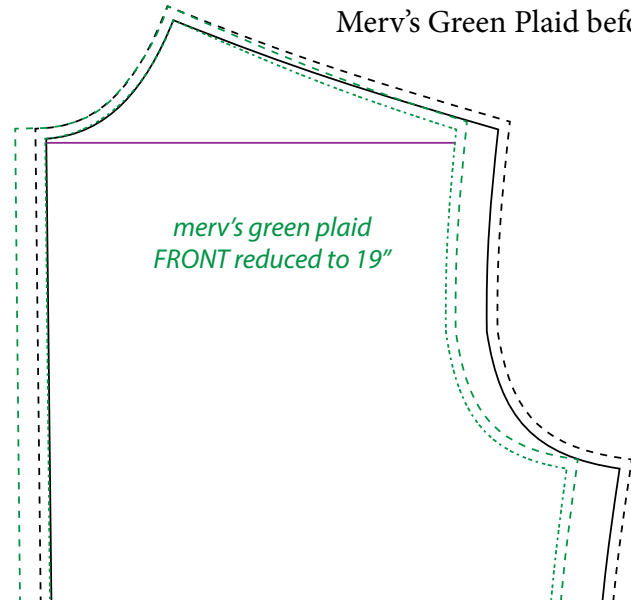
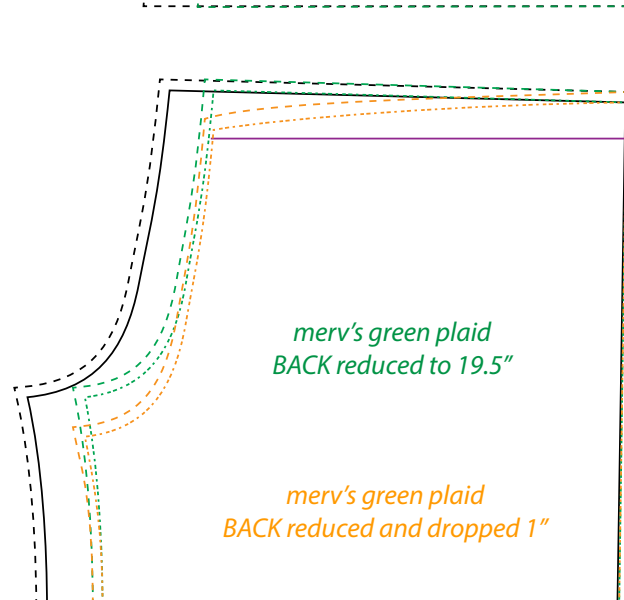


from THE SHIRTMAKING WORKBOOK, pages 26 and 27

[CLICK FOR LINKS TO VINTAGE SHIRT DRAFTS](#)



Merv's Green Plaid before



Merv's Green Plaid pattern after

